



Illustrated Parts List

AXIP0087

January 1994

Dual Range & Planetary Double Reduction
34, 38, 340, 341, 380, 381, 400, 402, 451

34,000 - 40,000 lbs

Introduction

Models Listing-----	2
How to Use The Illustrated Parts List-----	3
Model Identification-----	4-5

Dual Range & Planetary Double Reduction

Forward Axles (See Model Listing for models covered)-----	6-13
Rear Axles (See model listing for models covered)-----	14-17

Shift System

Differential Lockout Assembly - Current Production -----	18
Differential Lockout Assembly - Non-Current Production-----	19
Axle Shift System -----	20
Air Shifter Valve -----	21
Piston Air Shift System-----	22-23

Axle Housings & Shafts

All models (See model listing for models covered)-----	24-25
--	-------

Appendix

Differential Carrier Assemblies -----	26
Differential Carrier Assemblies/Hybrid Models -----	27
Differential Carrier Assembly Attaching Parts -----	28
Pinion Bearing Spacers -----	29
Ring Gear and Pinion Identification - Forward Axles -----	30
Ring Gear and Pinion Identification - Rear Axles -----	31
Yoke Selection Guide for Hybrid Differential Carrier -----	32
Yoke Selection Guide General -----	33
Servive Kits and Assemblies-----	34-39



Models Listing

The following models are represented in this publication.

Dual Range Models

Forward Axle	Rear Axle	Axle Capacity	Gear Size
34DT	34RT	34,000 lbs	16-16.5" Gear
38DT	38RT	38,000 lbs	16-16.5" Gear
DT340	RT340	34,000 lbs	16-16.5" Gear
DT380(P)	RT380	38,000 lbs	16-16.5" Gear
DT400-P	RT400	40,000 lbs	16-16.5" Gear
DT341	RT341	34,000 lbs	16-16.5" Gear
DT381(P)	RT381	38,000 lbs	16-16.5" Gear
DT401-P	RT401	40,000 lbs	16-16.5" Gear
DT402(P)	RT402	40,000 lbs	16-16.5" Gear
DT451-P	RT451	45,000 lbs	16-16.5" Gear

Planetary Double Reduction Models

Forward Axle	Rear Axle	Axle Capacity	Gear Size
34DP	34RP	34,000 lbs	16-16.50" Gear
38DP	38RP	38,000 lbs	16-16.50" Gear
DP340	RP340	34,000 lbs	16-16.50" Gear
DP380(P)	RP380	38,000 lbs	16-16.50" Gear
DP400-P	RP400	40,000 lbs	16-16.50" Gear
DP341	RP341	34,000 lbs	16-16.50" Gear
DP381(P)	RP381	38,000 lbs	16-16.50" Gear
DP401-P	RP401	40,000 lbs	16-16.50" Gear
DP402(P)	RP402	40,000 lbs	16-16.50" Gear
DP451-P	RP451	45,000 lbs	16-16.50" Gear

How To Use The Illustrated Parts List

Ordering Spicer Parts

- This parts book is organized in sections according to parts servicing requirements. Use the Contents or page headings and colored tabs to find information.
- Use this book to order parts for your Spicer Axle including:
 - **Differential carrier assembly**
 - **Axle housing**
 - **Axle shaft**
 - **Shift system**
 - **Kits and Assemblies**
- For convenience, part numbers have been included for all pieces of the carrier assembly. Some of these parts, such as the carrier and caps, are serviced only in kits or assemblies. Part numbers are for your reference only. Those parts not serviced separately are identified with NSS.

Kits and Assemblies

- Kits and Assemblies contain groups of individual or assembled parts developed for optimal replacement or repair of a service problem.
- Kits and Assemblies are shown with applicable parts groupings in the parts listing.
- See the Appendix for detailed information concerning kits applicable to this model.

Abbreviations

- **AR - As Required** - Parts that vary in quantity with each axle. Example: shims
- **NSS - Not Serviced Separately** - Items which can only be purchased in sets, kit form or service assemblies. Example: brake shoes.
- **RH/LH - Right Hand/Left Hand** - Determined as viewed from behind the vehicle looking forward.
- **“RTV” - Gasket Compound** - Formed-in-place gasket sealer. It is recommended for use on all surfaces requiring a gasket.
- **Assy - Assembly**
- **Brg - Bearing**
- **Diff - Differential**
- **Hsg - Housing**
- **Inv - Involute**
- **Str - Straight**

Illustrations

- Illustrations show parts in assembly groups.
- Item numbers on illustrations correspond with parts listings on pages that accompany the drawings
- Notes are included on illustrations where additional is needed.

Parts Listings

- Parts listings are defined by parts groupings and are broken down by service assemblies.
- Parts Listings identify a part for servicing with the following categories:
 - **Item** - corresponds with numbers on illustrations for part identification
 - **Current Part** - service part numbers are broken down by model, type or other applicable information
 - **Description** - specifies part name or description
 - **Replaced Part** - identifies superseded or replaced part numbers
 - **Quantity (Qty)** - quantity required for assembly
 - **Notes** - define unique characteristics or requirements
 - **Kits / Assy's Where Used** - indicates Kits or Assemblies that contain a particular part

** Other pertinent information is listed in tables or parts listings as required.*

Effectively using a parts listing—Example

- Follow the example below to locate and order exactly what is required for servicing.

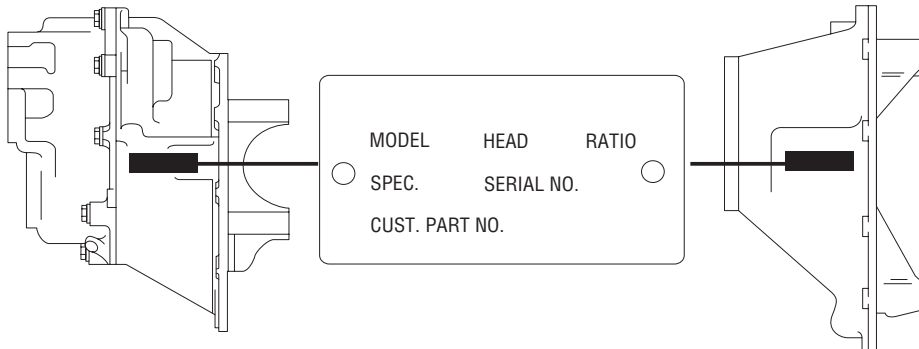
Match to items on illustration	Order this number	Use to identify Current Part	Indicates parts superseded or replaced by Current Part	Order this quantity for servicing	Indicates information important to ordering or use	Refer to this column to identify Kits or Assys that contain the Current Part
Item	Current Part	Description	Replaced Part	Qty	Notes	Kits/Assy's Where Used
1	98603	Output Shaft Kit	85441	1	10 spline - 1.750" dia.	
2	48922	Output Shaft Bushing	45468	1		98603, 110560



Model Identification

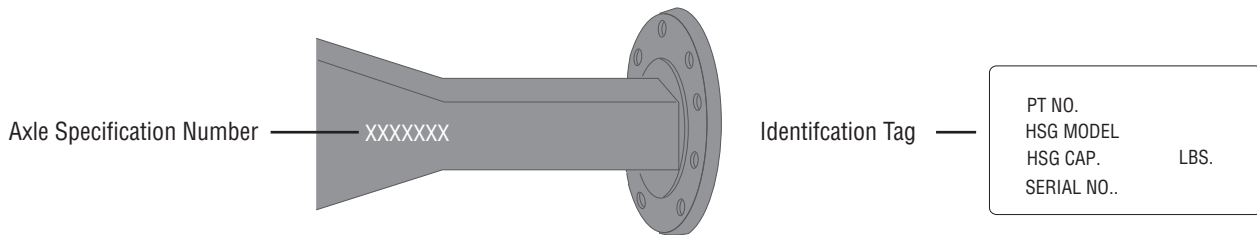
Locating Model Designation Information

- Axle Model Identification, Part Number and / or Serial Number are located on the axle centerline. This information will help to locate information in this book and to identify the correct parts for servicing.

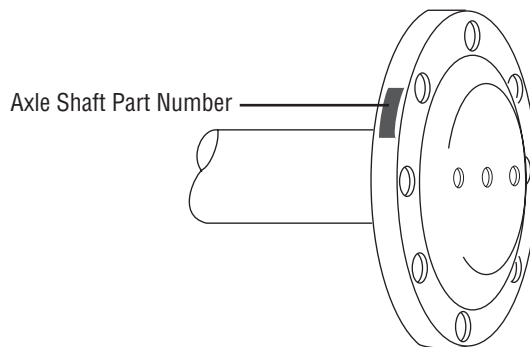


- **Model Number, Part Number and Serial Number** are located on the data plate on the axle centerline

- Axle Housings are identified by the specification number stamped on the rear right-hand side of the axle housing. This number identifies all components of the axle as built by Spicer, including OEM special requirements such as yoke or flange. Some axles may also include an identification tag as shown.



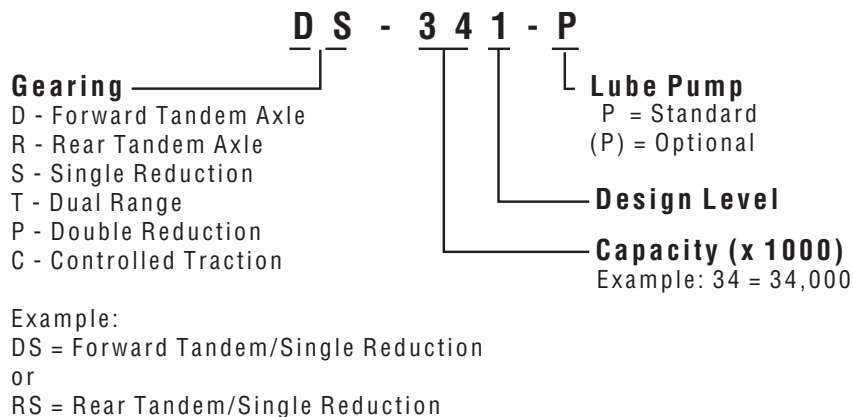
- The axles illustrated in this book are found on a number of different axle shafts, according to OEM specifications.
When ordering replacement axle shafts, note the part number stamped into the flange.



Model Identification

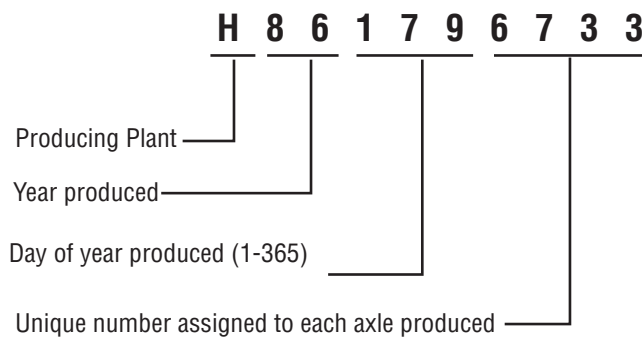
Using Model Designation to Identify Axle Components

- The Axle Model Identification number contains information that is important to understand when purchasing service parts or new components. The Model Identification number provides important vehicle, capacity and application information and model features. Use this guideline to understand your Trailer Axle Model Identification. If you need assistance, contact your Dana representative.



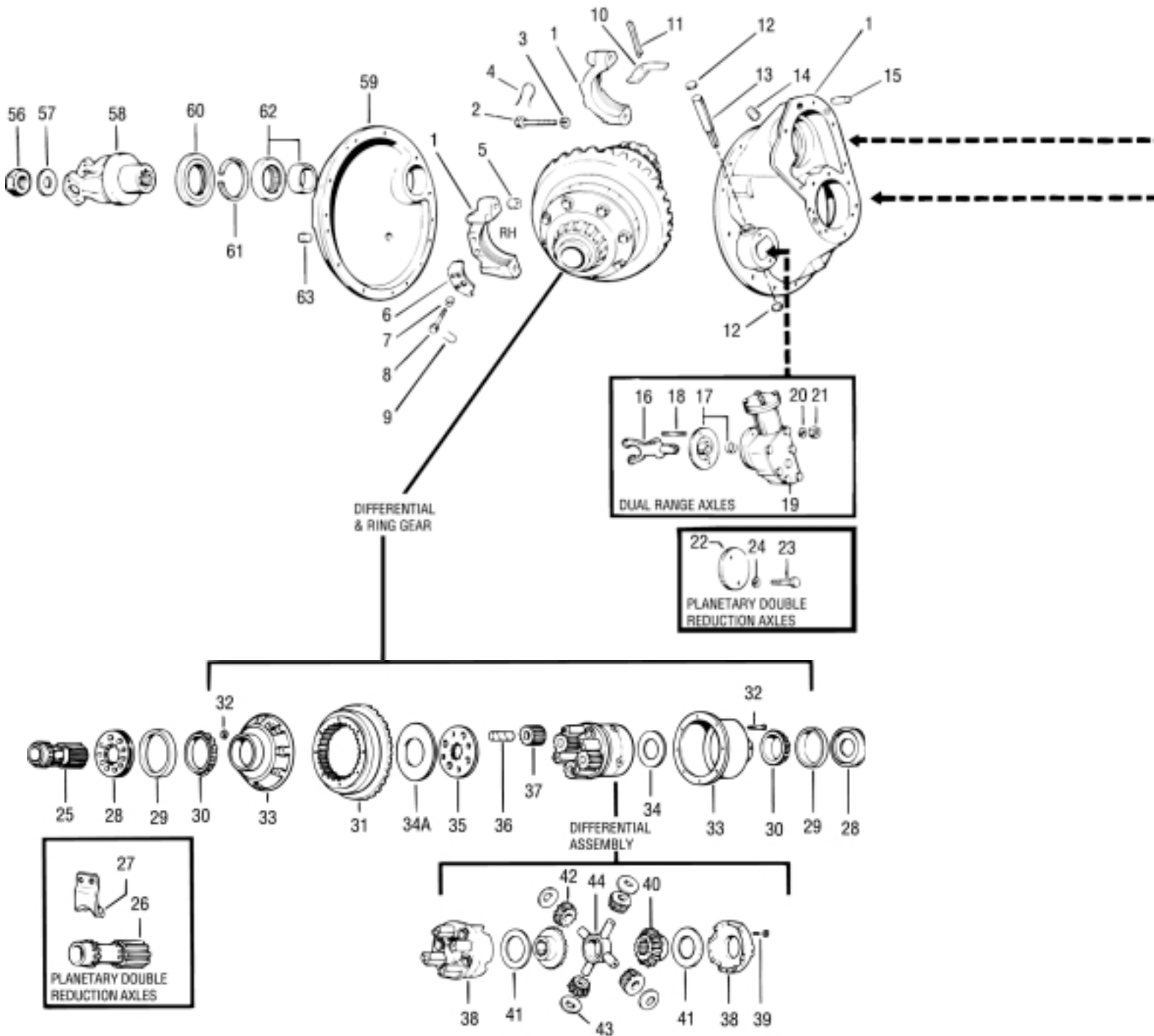
Older Model Serial Numbers

- Units built before May 1987 were identified with a date coding system. Carrier assemblies produced after this date are assigned unique serial numbers. Serial numbers are stamped into the carrier casting or contained on a metal tag attached to the carrier.

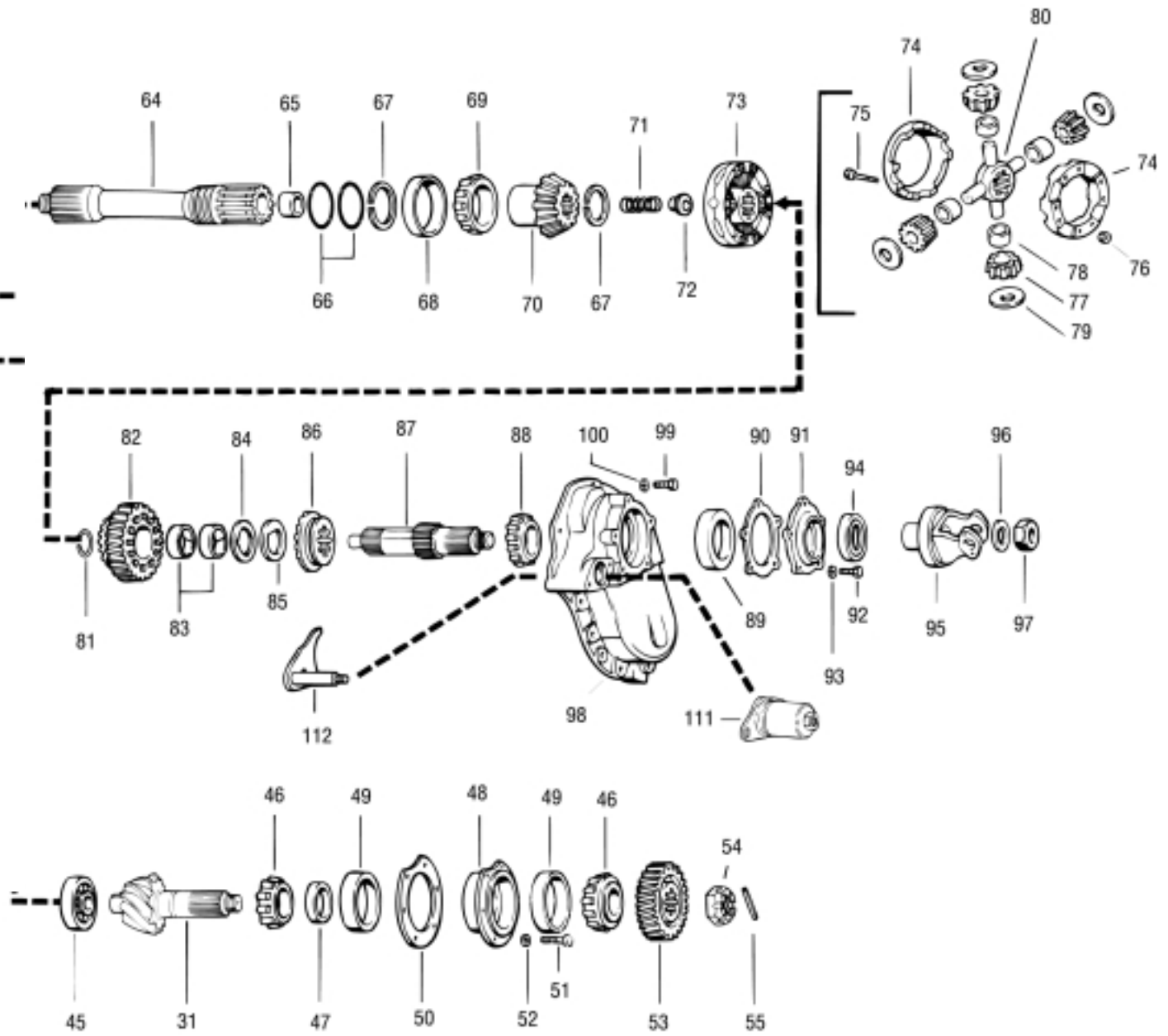


Dual Range & Planetary Double Reduction

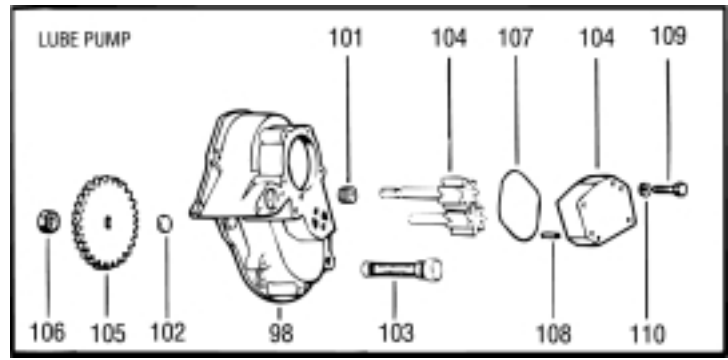
Forward Axle



Dual Range & Planetary Double Reduction



DT/DP -
 34 • 38 • 340 • 341 • 380(P) • 381(P) •
 400-P • 401-P • 402(P) • 451-P



Dual Range & Planetary Double Reduction

Forward Axle

Item	Part Name	Qty	DT / DP341, DT / DP381(P) DT / DP402(P) DT / DP401-P DT / DP451-P			DT / DP340 DT / DP380(P) DT / DP400-P	34DT / DP 38DT / DP	Remarks
	BASIC OVERHAUL KIT (Contents identified with ★)	1	115124 ★	110584 ★	110574 ★			
	BEARING KIT (Contents identified with ●)	1	115125 ●	99045 ● Note 1	99054 ● Note 1			
1	Diff. Carrier & Bearing Cap Kit Carrier Casting No. (NSS)	1	115825	120926	120925		See Kits & Assemblies	
			110816	110816	110816			
2	Bearing Cap Screw	4	32732	32732	32732			
3	Flat Washer	4	32912	32912	32912			
4	Lockwire	4	90538	90538	90538			
5	Dowel Bushing	2	32730	32730	32730			
6	Bearing Adjuster Lock (RH)	1	37745	37745	37745			
7	Adjuster Lock Dowel Bushing (RH)	2	37746	37746	37746			
8	Cap Screw (RH)	2	37747	37747	37747			
9	Lockwire	2	12563	12563	12563			
10	Bearing Adjuster Lock (LH)	1	13377	13377	13377			
11	Cotter Pin (LH)	1	90873	90873	90873			
12	Expansion Plug (Upper)	1	30703 ★	30703 ★	30703 ★			
	Expansion Plug (Lower)	1	9797 ★	9797 ★	9797 ★			
13	Shift Fork Shaft & "O" Ring Assy	1	113801	113801	113801			
14	Filler Plug	1	90325	90325	90325			
15	Carrier Cover Dowel Pin	2	7641	7641	7641			
16	Shift Fork & Roller Assy	1	32613	32613	32613			
17	Shift Fork Seal & Spring Assy	1	119855 ★	119855 ★	119855 ★		DT ONLY	
18	Shift Unit Mounting Stud	2	119863	119863	119863		DT ONLY	
19	Shift Unit Assy	1	73503	7303	73503		DT ONLY	
20	Lockwasher	1	119857	119857	119857		DT ONLY	
21	Stud Nut	2	63028	63028	63028		DT ONLY	
22	Shift Unit Opening Cover	1	45521	45521	45521		DP ONLY	
23	Cap Screw	2	20807	20807	20807		DP ONLY	
24	Lockwasher	2	90415	90415	90415		DP ONLY	
25	Sliding Clutch Gear	1	113596	113596	113596		DT ONLY 60608 SL CL Kit	
26	Sun Gear	1	113598	113598	113598		DP ONLY	
27	Sun Gear Retainer	1	43178	43178	43178		DP ONLY	
28	Diff. Bearing Adjuster (RH)	1	56932	56932	56932		60608 SL CL Kit	
	Diff. Bearing Adjuster (LH)	1	110243	27842	27842			
29	Diff. Bearing Cup (RH)	1	27816 ★●	27816 ★●	27816 ★●			
	Diff. Bearing Cup (LH)	1	9803 ★●	9803 ★●	9803 ★●			
30	Diff. Bearing Cone (RH)	1	27817 ★●	27817 ★●	27817 ★●			
	Diff. Bearing Cone (LH)	1	27813 ★●	27813 ★●	27813 ★●			
31	RING GEAR & DRIVE PINION SET Includes Item 54-55	Matched Parts; See Gear & Pinion Information						
32	RING GEAR BOLT & NUT KIT	1	87955	87955	87955			
	Bolt	8	44358	44358	44358			
	Nut	8	60599	60599	60599			
33	Gear Support Case (RH)	1	27838	27838	27838		116568 Replaces 27839 & 27842	
	Gear Support Case (LH)	1	110148	116568	116568			

Dual Range & Planetary Double Reduction

Item No.	Part Name	Qty Per Axle	DT / DP341, DT / DP381(P) DT / DP402(P) DT / DP401-P DT / DP451-P	DT / DP340 DT / DP380(P) DT / DP400-P	34DT / DP 38DT / DP	Remarks
34	Gear Support Thrust Washer	1	43270 ★	43270 ★	43270 ★	
34A	Gear Support Thrust Washer	1	27827 ★	27827 ★	27827 ★	
35	High-Speed Clutch Plate	1	56931	56931	56931	60608 SL CL Kit
36	Idler Pinion Pin	4	27861	27861	27861	
37	Idler Pinion	4	27835	27835	27835	
	WHEEL DIFF. CASE KIT	1	101878	101878	101878	
	Includes Items 38-39					
38	Diff. Case w/clutch plate pin (casting 96278)	1	98182	98182	98182	Flange Half
	Diff Case (RH) (NSS)	1	96279	96279	96279	Plain Half
39	Diff. Case Cap Screw	8	96283	96283	96283	
	WHEEL DIFF. SIDE GEAR & PINION KIT1					
	Includes Items 40-44					
	Models: 34, 340, 341		114469	98850	98850	
	38, 380, 381, 402		114470	85358	85358	
	400, 401, 451		98853	98853		
	WHEEL DIFF. KIT LESS SIDE GEARS	1	118748	118748	118748	
	Includes Items 41-44					
40	Diff. Side Gear	2				
	Models: 34, 340, 341		110525	37072	37072	
	38, 380, 381, 402		110527	37069	37069	
	400, 401, 451		85486	85486		
41	Side Gear Thrust Washer	2	27827 ★	27827 ★	27827 ★	
42	Side Pinion	4	104139	104139	104139	
	104139 replaces 37071					
43	Side Pinion Thrust Washer	4	27810 ★	27810 ★	27810 ★	
44	Spider	1	38289	38289	38289	
45	Pinion Pilot Bearing	1	15828 ★●	15828 ★●	15828 ★●	
46	Pinion Bearing Cone (Inner)	1	85439 ★●	85439 ★●	45460 ★●	
	Pinion Bearing Cone (Outer)	1	110846 ★●	45460 ★●	45460 ★●	
47	Pinion Bearing Spacer	AR				
	See Gear & Pansion Information					
48	Pinion Bearing Cage & Cup Assy	1				
	Includes Item 49					
	Ratio 3.55-3.70	1	110731	107322	—	110731 Cast =110730
	Other Ratios	1	110733	107324	—	110733 Cast =110732
	34/38DTB,C, 34/38DPB, C	1	—	—	107322	107322 Cast =107321
	34/38DTD,E, 34/38DPD, E	1	—	—	107324	107324 Cast 107323
49	Pinion Bearing Cup (Inner)	1	14217 ★●	14217 ★●	14217 ★●	
	Pinion Bearing Cup (Outer)	1	35502 ★●	14217 ★●	14217 ★●	
50	Pinion Bearing Cage Shim	AR				
	.003"		45461 ★	45461 ★	45461 ★	
	.005"		62829 ★	62829 ★	62929 ★	
	.010"		45462 ★	45462 ★	45462 ★	
	.020"		62830 ★	62830 ★	62830 ★	
	.030"		45463 ★	45463 ★	45463 ★	

DT/DP -
 34 • 38 • 340 • 341 • 380(P) •
 381(P) • 400-P • 401-P • 402(P) •

Dual Range & Planetary Double Reduction

Forward Axle

Item No.	Part Name	Qty Per Axle	DT / DP341, DT / DP381(P) DT / DP402(P)			34DT / DP 38DT / DP	Remarks
			DT / DP401-P DT / DP451-P	DT / DP340 DT / DP380(P) DT / DP400-P			
51	Bearing Cage Cap Screw	6	62158	62158	62158		
52	Lockwasher	6	37207	37207	37207		
53	Pinion Helical Gear	1	110845	74991	—		
	34/38DTB,C & DPB,C		—	—	46977		
	34/38DTD,E & DPD,E		—	—	74991		
54	Slotted Nut	1	118806	118854	118854		
	Pinion Nut		NOTE 2	NOTE 8	9520		
55	Roll Pin	1	118807	118855	118855		
56	Output Shaft Nut	1	95205	95205	95205		
57	Flat Washer	1	4327 ★	4327 ★	4327 ★		
58	Output Yoke						
	See Input/Output Yoke Selection						
59	Axle Housing Cover Assy	1					
	Includes Items 60-63						
	(Cover 127781 NSS)		107320	—	—		
	3/4" (Cover 127874 NSS)		—	75336	75336		
	1" (Cover 77749 NSS)		—	—	77750		
	Rear Bearing Retaining Washer	1	—	46583 ★	46583 ★		
	(not illustrated)						
60	Output Shaft Oil Seal	1	127720	127720	127720		Replaces old seal 119431
61	Bearing Snap Ring	1	45516 ★	45516 ★	45516 ★		
62	Output Shaft Bearing & Sleeve Assy		46584	46584	46584		
	Inner Bearing Race	1	118789 ★●	118789 ★●	118789 ★●		
	Outer Bearing Race	1	118790 ★●	118790 ★●	118790 ★●		
63	Magnetic Filler Plug		—	54254	54254		3/4"
		1	75130	75130	75130		7/8"
		1	77944	77944	77944		1"
	Hole Plug	1	90898	90898	90898		
64	OUTPUT SHAFT, NUT & BUSHING KIT	1	115123	98603	98603		
	(Shaft NSS) 34 splines, 1.750" dia.	1	128736				128736 replaces old #110818
	(Shaft NSS) 10 splines, 1.750" dia.	1		85441	85441		
65	Output Shaft Bushing	1	NOTE 3	48922 ★	48922 ★		
66	Output Shaft "O" Ring	2	46526 ★	46526 ★	46526 ★		
67	Side Gear Snap Ring	2	85994 ★	85994 ★	85994 ★		
					NOTE 4		
68	Output Shaft Bearing Cup (Inner)	1	110811 ★●	51232 ★●	51232 ★●		
69	Output Shaft Bearing Cone (Inner)	1	110812 ★●	51233 ★●	51233 ★●		
70	Output Shaft Side Gear	1	110810				
71	Output Shaft Spring	1	51238	—	—		
72	Output Shaft Spring Thrust Bearing	1	51228	—	—		
73	Inter-axle Diff. Assy	1	213608	104509	95213		
	Includes Items 74-80						
74	DIFF. CASE KIT	1	Order 213608	94810	91850		NOTE 9
	Case Half (NSS)		127784	102621	88029		
75	Bolt	8	85438	85438	85438		
76	Nut	8	57637	57637	57637		
	DIFF. SIDE PINION & SPIDER KIT	1	—	96381	96380		
	Includes Items 77-80						
77	Side Pinion	4	95214	95214	95210		
78	Side Pinion Bushing	4	NOTE 9	95215 ★	95211 ★		

Dual Range & Planetary Double Reduction

Item No.	Part Name	Qty Per Axle	DT / DP341, DT / DP381(P) DT / DP402(P)			34DT / DP 38DT / DP	Remarks
			DT / DP401-P DT / DP451-P	DT / DP340 DT / DP380(P) DT / DP400-P			
79	Side Pinion Thrust Washer	4	127785	85437 ★	25968 ★		
80	Spider	1	127783	95216	95212		
81	Helical Side Gear Snap Ring	1	85997 ★	85997 ★	46983 ★		
82	Helical Side Gear & Bushing Assy	1	128042	85432	45476		
	Includes Item 83			NOTE 5			
	Side Gear (NSS)		128018	85431	45474		
83	Helical Side Gear Bushing	2	85991 ★	85991 ★	48921 ★		
84	Helical Side Gear Thrust Washer	1	85429 ★	85429 ★	45477 ★		
85	Helical Side Gear "D" Washer	1	45478 ★	45478 ★	45478 ★		
86	Lockout Sliding Clutch	1	128016	128016	45480		
87	INPUT SHAFT, WASHER & NUT KIT						
	Includes Items 85 & 97				NOTE 6		
	Models w/o Lube Pump	1	115122	103289	98693		
	(Shaft NSS) 44 splines, 2.250" dia.	1	128740			128740 replaces old #110823	
	(Shaft NSS) 16 splines, 2.125" dia.	1		103283			
	(Shaft NSS) 10 splines, 1.969" dia.	1			88285		
	Models w/Lube Pump	1	115126	106709	—		
	(Shaft NSS) 44 splines, 2.250" dia.	1	128739			128739 replaces old #110805	
	(Shaft NSS) 16 splines, 2.125" dia.	1		102608	—		
88	Input Shaft Bearing Cone	1	91136 ★ ●	85425 ★ ●	83469 ★ ●		
89	Input Shaft Bearing Cup	1	98388 ★ ●	85424 ★ ●	83462 ★ ●		
90	Input Bearing Cover Shim	AR					
	.003"		45498 ★	45498 ★	45498 ★		
	.005"		70709 ★	70709 ★	70709 ★		
	.010"		45499 ★	45499 ★	45499 ★		
	.020"		85406 ★	85406 ★	85406 ★		
91	Input Bearing Cover, Cup & Oil Assy	1					
	Includes Items 89 & 94						
	Models w/lube Pump		211888	102629	—		
	(Cover NSS)		110806	102614			
	Models w/o lube pump		211634	85423	86813		
	(Cover NSS)		110824	85421	86811		
92	Bearing Cover Cap Screw	5	113324	113324	113324		
93	Lockwasher	5	90414	—	—		
	OIL SEAL & SHIM KIT	1	114395				
	Includes Items 17, 50, 60, 90 94 & RTV						
	Input Shaft Spacer Washer (not illustrated)	1	—	85427 ★	—		
94	Input Shaft Oil Seal	1	127719 ★ ●	127719 ★ ●	119431 ★ ●	127719 replaces old #119429	
95	Input Yoke See Input/Output Yoke Selection						
96	Flat Washer	1	85404 ★	85404 ★	56864 ★		
97	Input Shaft Nut	1	95207	95207	95206		

DT/DP -
 34 • 38 • 340 • 341 • 380(P) •
 381(P) • 400-P • 401-P • 402(P) •

Dual Range & Planetary Double Reduction

Forward Axle

Item No.	Part Name	Qty Per Axle	DT / DP341, DT / DP381(P) DT / DP402(P)			DT / DP340 DT / DP380(P) DT / DP400-P	34DT / DP 38DT / DP	Remarks
			DT / DP401-P	DT / DP451-P				
98	Diff. Carrier Cover Assy							
	Models w/o Lube Pump.	1	45481		45481		45481	
	Models w/Lube Pump	1	102627		102627		—	
	Includes Items 101-102							
	Cover (NSS)		102606		102606		—	
99	Carrier Cover Cap Screw							
	(long)	4	12063		12063		12063	
	(short)	5	90069		90069		90069	
100	Lockwasher	9	90417		90417		90417	
101	Pipe Plug	1	90325		90325		—	
102	Expansion Plug	1	9797		9797		—	
103	Magnetic Filter Screen	1	102611		102611		—	
	Models w/Lube Pump							
104	LUBE PUMP REPLACEMENT KIT	1	106368		106368		—	
	Models w/Lube Pump							
	Includes Items 105-110							
105	Pump Drive Gear	1	111448		102609-NOTE 7		—	
106	Drive Gear Locknut	1	111451		63028		—	
	Drive Gear Woodruff Key	1	—		81471		—	
	(not illustrated)							
107	Cover "O" Ring	1	102620 ★		102620 ★		—	
108	Cover Dowel Pin	2	102617		102617		—	
109	Cover Cap Screw	4	102618		102618		—	
110	Lockwasher	4	90419		90419		—	
111	Air-Operated Lockout Assy							
	See Shift System/Differential Lockout Assembly							
112	Shift Fork & Push Rod Assy							
	Models w/Lube Pump	1	102613		102613		—	
	Models w/o Lube Pump	1	45859		45859		45859	
	Gasket Compound	AR	107276 ★●		107276 ★●		107276 ★●	

NSS—Not Sold Separately

NOTE 1: 120926 is interchangeable with 115825 by also using 110810 Output Shaft Side Gear. This conversion can be applied to 34/38D if power divider is also converted to D340/400 or D341/381/401.

NOTE 2: Axles built prior to May 1, 1982 use 95207 self-locking nut. Later models use 118806 slotted nut plus 118807 roll pin.

NOTE 3: Output shaft kit 115123 now contains shaft p/n 128736 which doesn't use an output shaft bushing. Refer to Technical Information Bulletin #93-06.

NOTE 4: For earlier style Output Shafts 46647 and 98603, use 44178 Snap Ring.

NOTE 5: Order Helical Gear Conversion Kit 113561.

NOTE 6: Early model axles use a ball bearing on input shaft. To convert ball bearing to taper bearing, use Kit 86987 which contains items 88, 90 & 91

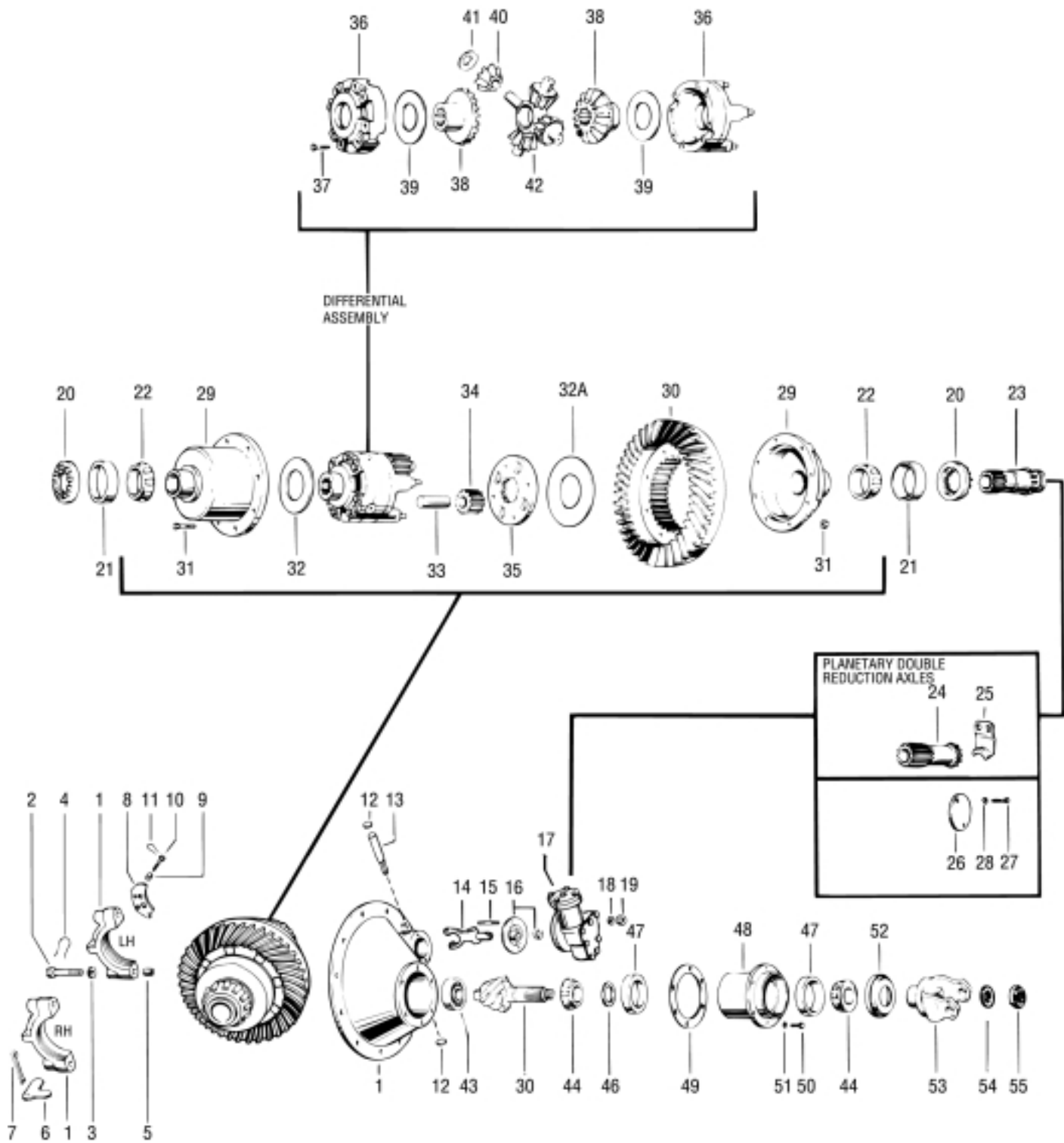
NOTE 7: 102609 Remains available for early pump models built with woodruff keys.

NOTE 8: Production Axles used 95206 self-locking nut, service gear sets now use 118854 slotted nut plus 118855 roll pin.

NOTE 9: Refer to Technical Information Bulletin #93-04 for more details.

Dual Range & Planetary Double Reduction

Rear Axle



Dual Range & Planetary Double Reduction

Item No.	Part Name	Qty Per Axle	RT / RP341	RT / RP340	34RT / RP	Remarks
			RT / RP381	RT / RP380	38RT / RP	
			RT / RP402	RT / RP400		
			RT / RP401	RT / RP400		
			RT / RP451			
	BASIC OVERHAUL KIT (Contents identified with ★)	1	110585 ★	110585 ★	110585 ★	
	BEARING KIT (Contents identified with ●)	1	99051 ●	99051 ●	99051 ●	
1	Diff. Carrier & Bearing Cap Kit	1	67759	67759	67759	See Back of Book For Contents of Kit
	Carrier Casting No. (NSS)	1	106411	106411	106411	
2	Bearing Cap Screw	2	127180	127180	127180	
		2	32732	32732	32732	
3	Flat Washer	4	32912	32912	32912	
4	Lockwire	2	90538	90538	90538	
5	Dowel Bushing	2	32730	32730	32730	
6	Bearing Cap Adjuster Lock (RH)	1	13377	13377	13377	
7	Cotter Pin (RH)	1	90873	90873	90873	
8	Bearing Cap Adjuster Lock (LH)	1	37745	37745	37745	
9	Dowel Bushing (LH)	2	37746	37746	37746	
10	Cap Screw (LH)	2	37747	37747	37747	
11	Lockwire	2	12563	12563	12563	
12	Expansion Plug (Upper)	1	30703 ★	30703 ★	30703 ★	
	Expansion Plug (Lower)	1	9797 ★	9797 ★	9797 ★	
13	Shift Fork Shaft & "O" Ring Assy	1	113801	113801	113801	RT ONLY
14	Shift Fork & Roller Assy	1	32613	32613	32425	RT ONLY
15	Shift Unit Mounting Stud	2	119863	119863	119863	RT ONLY
16	Shift Fork Seal & Spring Assy	1	119855 ★	119855 ★	119855 ★	RT ONLY
17	Shift Unit Assy	1	73507	73507	73507	RT ONLY
18	Lockwasher	2	119857	119857	119857	RT ONLY
19	Stud Nut	2	63028	63028	63028	RT ONLY
20	Diff. Bearing Adjuster (RH)	1	110243	27842	27842	
	Diff. Bearing Adjuster (LH)	1	56932	56932	56932	In 60608 SL CL Kit
21	Diff. Bearing Cup (RH)	1	9803 ★●	9803 ★●	9803 ★●	
	Diff. Bearing Cup (LH)	1	27816 ★●	27816 ★●	27816 ★●	
22	Diff. Bearing Cone (RH)	1	27813 ★●	27813 ★●	27813 ★●	
	Diff. Bearing Cone (LH)	1	27817 ★●	27817 ★●	27817 ★●	
23	Sliding Clutch	1	113596	113596	113596	RT ONLY - In 60608 SL CL Kit
24	Sun Gear	1	113598	113598	113598	RP ONLY
25	Sun Gear Retainer	1	43178	43178	43178	RP ONLY
26	Shift Unit Opening Cover	1	45521	45521	45521	RP ONLY
27	Cap Screw	2	20807	20807	20807	RP ONLY
28	Lockwasher	2	90415	90415	90415	RP ONLY

RT/RP -
 34 • 38 • 340 • 341 • 380 • 381 •
 400 • 401 • 402 • 451

Dual Range & Planetary Double Reduction

Rear Axle

Item No.	Part Name	Qty Per Axle	RT / RP341	RT / RP340	34RT / RP	Remarks
			RT / RP381	RT / RP402	RT / RP380	
			RT / RP401	RT / RP400		
			RT / RP451			
29	Gear Support (RH)	1	110148	116568	116568	
30	Ring Gear & Drive Pinion Set (Includes Item 54-55)		See Gear & Pinion Information			
31	RING GEAR NUT & BOLT KIT	1	87955	87955	87955	
	Bolt	8	44358	44358	44358	
	Nut	8	60599	60599	60599	
32	Gear Support Thrust Washer (RH)	1	27827 ★	27827 ★	27827 ★	
32A	Gear Support Thrust Washer (LH)	1	43270 ★	43270 ★	43270 ★	
33	Idler Pinion Pin	4	27861	27861	27861	
34	Idler Pinion	4	27835	27835	27835	
35	High-Speed Clutch Plate	1	56931	56931	56931	In 60608 SL CL Kit
	WHEEL DIFF. CASE KIT	1	101878	101878	101878	
	Includes Items 36-37					
36	Diff. Case w/clutch plate pin (Casting 96268) (LH) (NSS)	1	98182	98182	98182	Flange Half
	Diff. Case (RH) (NSS)	1	96279	96279	96279	Plain Hal
37	Diff. Case Cap Screw	8	96283	96283	96283	
	WHEEL DIFF. SIDE GEAR & PINION KIT					
	Includes Items 38-42					
	Models: 34, 340, 341	1	114469	98850	98850	
	38, 380, 381, 402	1	114470	85358	85358	
	400, 401, 451	1	98853	98853	—	
	WHEEL DIFF. KIT LESS SIDE GEARS	1	118748	118748	118748	
	Includes Items 39-42					
38	Side Gear	2				
	Models: 34, 340, 341		110525	37072	37072	
	38, 380, 381, 402		110527	37069	37069	
	400, 401, 451		85486	85486		
39	Side Gear Thrust Washer	2	27827 ★	27827 ★	27827 ★	
40	Side Pinion	4	104139	104139	104139	104139 replaces 37071
41	Side Pinion Thrust Washer	4	27810 ★	27810 ★	27810 ★	
42	Spider	1	38289	38289	38289	
43	Pinion Pilot Bearing	1	15828 ★●	15828 ★●	15828 ★●	
44	Pinion Bearing Cone	2	12496 ★●	12496 ★●	12496 ★●	
46	Pinion Bearing Spacer	AR	See Hybrid Differential Carrier Assemblies			

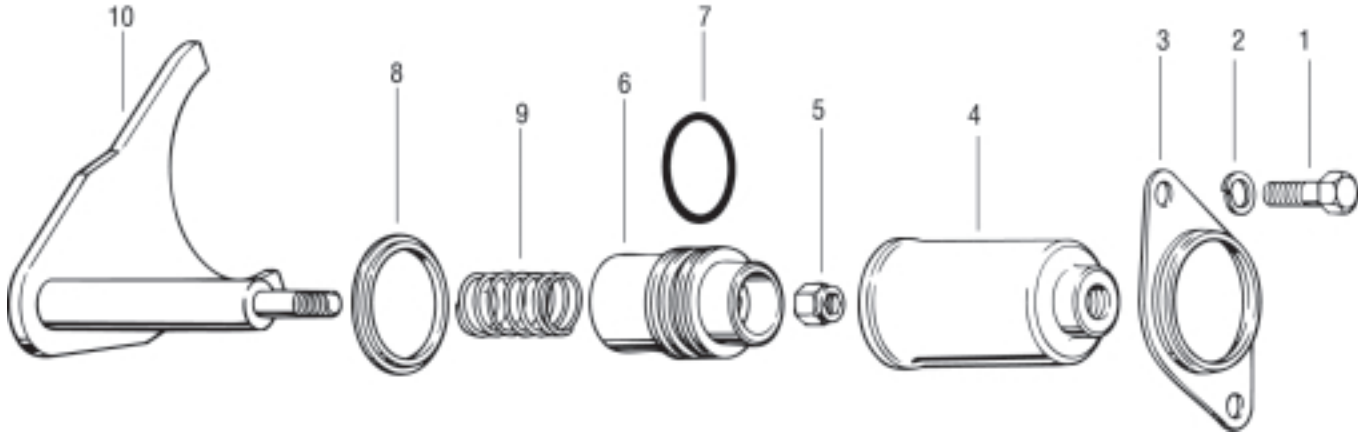
Dual Range & Planetary Double Reduction

Item No.	Part Name	Qty Per Axle	RT / RP341	RT / RP340	34RT / RP	Remarks
			RT / RP381	RT / RP380	38RT / RP	
			RT / RP402	RT / RP400		
			RT / RP401	RT / RP380		
			RT / RP451	RT / RP400		
47	Pinion Bearing Cup	2	12495 ★●	12495 ★●	12495 ★●	
48	Pinion Bearing Cage & Cup Assy	1				Includes Item #47
	Ratios 3.55/4.83 & 3.70/5.05 (Cage 75107 NSS)		75108	75108	—	
	Other Ratios (Cage 75109 NSS)		75110	75110	—	
	34/38RTB,C, 34/38RPB,C		—	—	75108	
	34/38RTD,E, 34/38RPD,E		—	—	75110	
49	Pinion Bearing Cage Shim	AR				
	.003"		107567 ★	107567 ★	107567 ★	
	.005"		107568 ★	107568 ★	107568 ★	
	.010"		107569 ★	107569 ★	107569 ★	
	.020"		107570 ★	107570 ★	107570 ★	
50	Cap Screw	6	113325	113325	113325	
51	Lockwasher	6	37207	37207	37207	
	OIL SEAL & SHIM KIT	1	114104	114104	114104	
	Includes Items 16, 49, 52 & RTV					
52	Oil Seal	1	127721 ★●	119427 ★●	119427 ★●	
53	Input Yoke	1	See Input./Output Yoke Selection			
54	Flat Washer	1	56864	56864	4327	
55	Pinion Nut	1	95206	95206	—	
	Ratios 3.70-4.11 (2" spline)	—	—	—	95206	
	Ratios 4.33-7.17 (1-3/4" spline)	—	—	—	95205	
	Gasket Compound	AR	107276 ★●	107276 ★●	107276 ★●	

NSS—Not Sold Separately

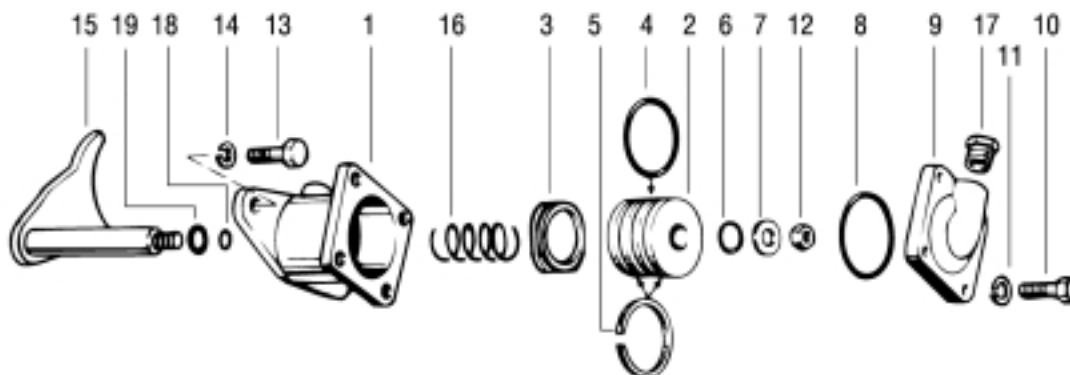
RT/RP -
 34 • 38 • 340 • 341 • 380 • 381 •
 400 • 401 • 402 • 451

Differential Lockout Assembly – Current Production



Item No.	Part Name	Qty. Per Axle	Part No.	Remarks
	Air-Operated Lockout Assy.	1	123216	Models w/lube pump
	Includes Items 1-10	1	123217	Models w/o lube pump
	REPAIR KIT			
	Includes Items 5-9	1	211197	Models w/lube pump
			211198	Models w/o lube pump
1	Cap Screw	2	210381	
2	Lockwasher	2	90415	
	PISTON KIT			
	Includes Items 3-8	1	121332	Models w/lube pump
		1	121333	Models w/o lube pump
3	Mounting Bracket	1	127675	
4	Piston Housing	1	119923	
5	Locknut	1	128160	
6	Piston	1	119913	Models w/lube pump
			119912	Models w/o lube pump
7	Piston "O" Ring	1	210180	
8	Shoulder Washer	1	210452	
9	Compression Spring	1	31038	
10	Shift Fork & Push Rod Assy.	1	102613	Models w/lube pump
		1	45859	Models w/o lube pump

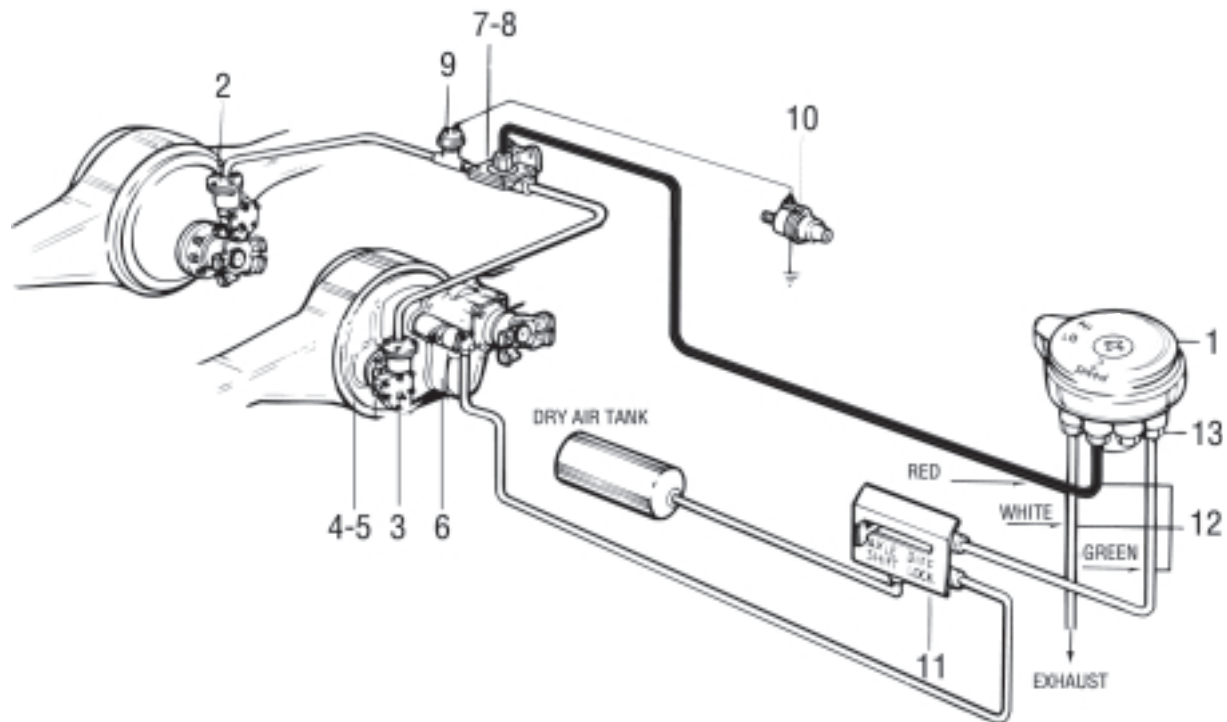
Differential Lockout Assembly – Non-Current Production



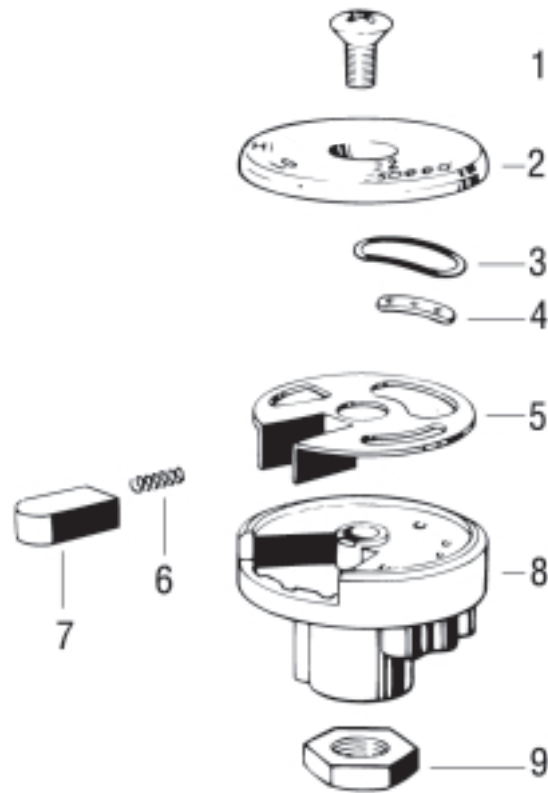
Item No.	Part Name		Qty. per Axle	Standard Part No.	Navistar Reversed-Air Part No.	Remarks
	Air-Operated Lockout Assy	NSS	1	NOTE 1	96919	Models w/o lube pump
	Includes Items 1-19 unless noted		NSS	1	NOTE 1	107621 Models w/lube pump
pump	DIFFERENTIAL AIR LOCKOUT RETROFIT KIT (Note 1)		1	211200	—	Models w/o lube pump
	LOCKOUT BODY KIT		1	211199	—	Models w/lube pump
	Includes Items 1-9		1	34779	—	Models w/o lube pump
	AIR LOCKOUT SERVICE KIT		1	104599	—	Models w/lube pump
	Includes Items 3-8, 12, 16, 18-20		1	211201	211202	Models w/o lube pump
1	Shift Cylinder Body		1	32828	96913	
2	Shift Cylinder Piston		1	32834	96915	
3	Piston Stop	NSS	1	102616	—	Models w/lube pump
4	Piston Grommet	NSS	1	32832	32832	
5	Piston Felt Oiler	NSS	2	96916	96916	
6	Push-Rod Grommet	NSS	1	32826	—	
7	Push-Rod Flat Washer	NSS	1	111406	111406	
8	Cover Grommet	NSS	1	60817	60817	
9	Body Cover		1	32831	32831	
10	Cover Cap Screw		4	79363	79363	
11	Lockwasher		4	90419	90419	
12	Push-Rod Nut	NSS	1	90206	90206	
13	Body Cap Screw		2	90031	90031	
14	Lockwasher		2	90415	90415	
15	Shift Fork Assy		1	45859	96715	Models w/o lube pump
	Shift Fork Assy		1	102613	107620	Models w/lube pump
16	Compression Spring	NSS	1	31038	126705	
17	Cover Reducer Bushing		1	—	108223	Models w/lube pump
18	Push-Rod to Piston Seal Ring		1	—	96912	
19	Push-Rod to Body "O" Ring		1	—	96911	
20	Gasket Compound		AR	107276	107276	

NOTE 1: Air-Operated Lockout Assembly 58421 and 104600 are no longer available. If it is necessary to repair complete unit, use Differential Air Lockout Retrofit Kits 211200 or 211199.

Axle Shift System

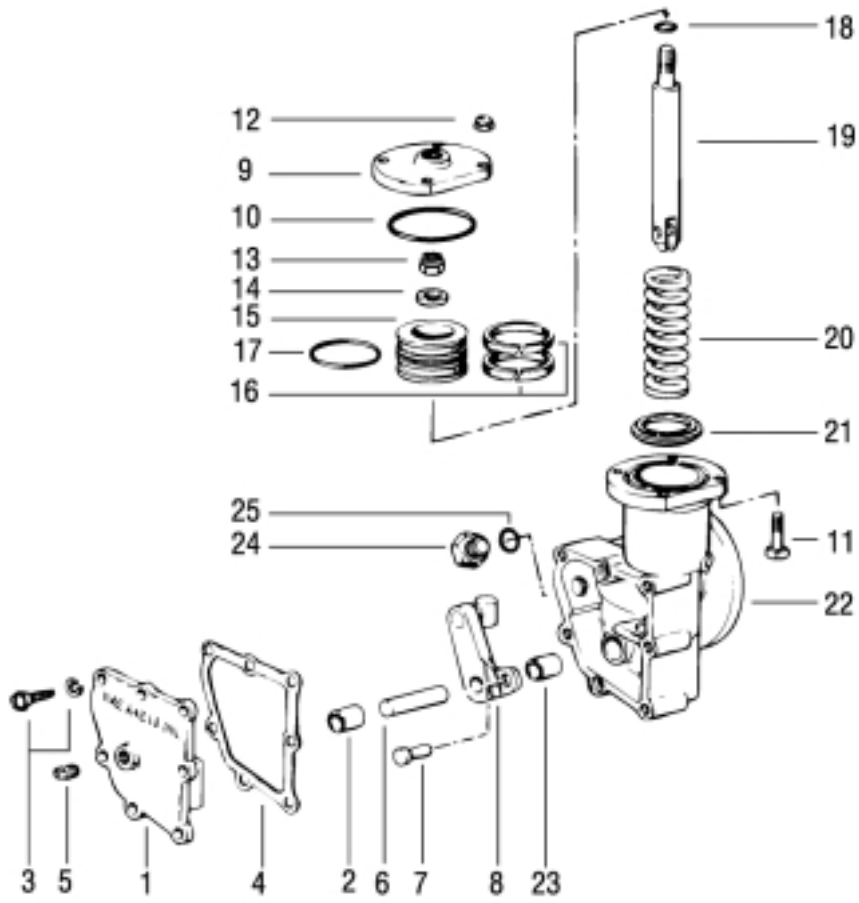


Item No.	Part Name	Qty. per Axle	Part No.	Remarks
1	Shifter Valve			(See page 25)
2	Rear Axle Shift Unit	1	73507	(See page 26)
3	Forward Axle Shift Unit	1	73503	(See page 26)
4	Plug	1	58309	(Forward axle only)
5	"O" Ring	1	56659	(Forward axle only)
6	Lockout Cylinder	1		(See page 16)
7	Quick Release Valve	2	66468	
8	Elbow Tube Connector	2	66476	(In Quick Release Valve)
9	Speedometer Adapter Pressure Switch	1	56071	(Normally Closed Type)
10	Speedometer Adapter	1		(Refer to OEM Catalog)
11	Lockout Valve (toggle-type)	1	74265	(In cab)
	Lockout Instruction Tag	1	104608	(In cab)
12	Tubing & Related Parts	AR		
	Green		66472	(Supply)
	Red		66473	(To Quick Release Valve)
	White		66475	(Exhaust)
	Loom		66479	
	Loom Clip		66478	
13	Connector	4	66471	



Item No.	Part Name	Qty. per Axle	Part No.	Remarks
	Air Shifter Valve Assy. (Varies with Lever Size)	1	74876 74877 74878 74879	Lever Size (5/8"-11) (1/2"-20) (1/2"-13) (3/8"-24)
1	Cover Screw	1	66459	
2	Cover	1	70740	
	AIR VALVE REPAIR KIT	1	78439	Includes Items 3-7
3	"O" Ring	1	66455	
4	"O" Ring Guide	1	66454	
5	Shifter Plate	1	74860	
6	Spring	1	74861	
7	Shifter Knob (Valve Lock)	1	74863	
8	Housing (Varies with Lever Size) Must order complete shift valve	1		
9	Jam Nut Varies with lever size.	1	56286 59600 NLA 56526	(5/8"-11) (1/2"-20) (1/2"-13) (3/8"-24)

Piston Air Shift System

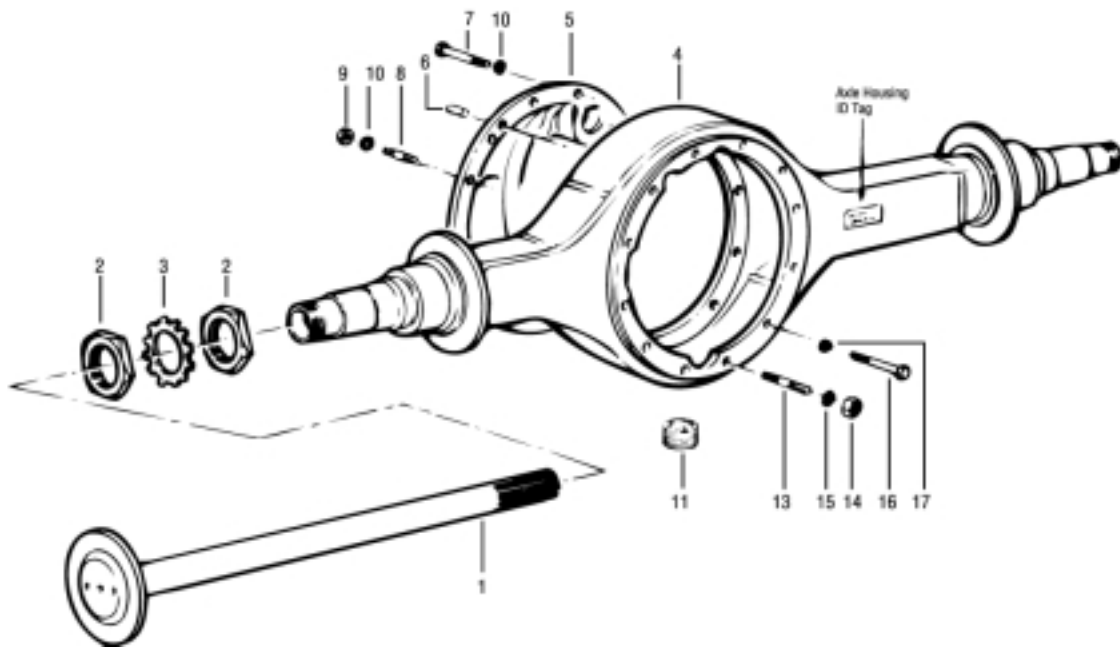


Shift System

Item No.	Part Name	per Axle	Part No.	Remarks
	Piston Air Shift Unit Assy.	1	73503	(DT only)
	(Electric Over Air or Straight Air)	1	73507	(RT only)
	(Includes Items 1-23)			
1	Cover Assy. (includes Item 2)	1	73486	(DT only)
			73487	(RT only)
2	Cover Bearing	1	73481	
3	Self-Tapping Screw & Washer Assy.	7	88053	
4	Cover Gasket	1	73488	
5	Cover Plug	1	28325	
6	Actuating Lever Pin	1	73456	
7	Clevis Pin	1	73498	
8	Actuating Lever, Pin & Block Assy.	1	84803	(DT only)
		1	84804	(RT only)
9	Shift Housing Cover	1	73490	
10	Seal Ring	1	73492	
11	Cover Bolt	4	73491	
12	Lock Nut	4	47641	
13	Lock Nut	1	73496	
14	Washer	1	111406	
15	Piston	1	73493	
16	Felt Piston Oiler (strip)	2	96916	
17	Piston "O" Ring	1	32832	
18	Grommet	1	32826	
19	Push Rod	1	73497	
20	Compression Spring	1	73494	
21	Piston Stop	1	73495	
22	Housing Assy. (includes Items 3 & 23)	1	82428	(DT only) Hsg # 84797
		1	82429	(RT only) Hsg # 84798
23	Housing Bearing	1	73481	
24	Cap Screw	1	58309	(DT only)
25	"O" Ring	1	56659	(DT only)

Axle Housing

Axle Housing & Parts



Axle Housing

Item No.	Part Name	Qty. per Axle	Part No.	Remarks
1	Axle Shaft	2		See Appendix/Differential Carrier Assembly Attaching Parts
2	Hub Bearing Adjuster Nut (see Note 1) (Forward and Rear Axles) (varies by OEM)	4	19186 * * 78944 95372	(0.47" thick) D341, 34D (3/8" thick) D381, 381-P, 402, 402-P, 38D (0.562" thick) D381, 381-P, 402, 402-P,
38D			11249 * *	(17/32" thick) all except D341
		2	119881	(outer) all except D341
		2	119882	(inner) all except D341
3	Bearing Adjuster Lockwasher (see Note 1) (Forward and Rear Axles) (*varies by OEM)	2	30714 11245 119883	all except D341
4	Axle Housing Assy (forward & rear)	1		See OEM Catalog
5	Axle Housing Cover (forward axle only)	1		See Axle Hsg Cover - Forward Axle
6	Axle Housing Cover Locating Dowel	2	7641	
7	Axle Housing Cover Cap Screw	1	119784	
8	Axle Housing Cover Stud	11	47500	
9	Nut	11	42364	
10	Lockwasher	11	90415	
11	Magnetic Drain Plug		54254	
12	Magnetic Filler Plug (rear axle) (not illustrated)		54254 75130	3/4" 1"
	FORWARD AXLE			
13	Stud	10	36435	
14	Nut	10	90208	
15	Lockwasher	10	90422	
16	Cap Screw	2	38589	
17	Lockwasher	2	90422	
	REAR AXLE			
13	Stud	12	36435	
14	Nut	12	90208	
15	Lockwasher	12	90422	
	Breather	1	809560	Order Kit 123369
	Plastic Snap Cap	1	126980	Order Kit 123369
	Reducer Adapter	1	809561	3/8" to 1/8" adapter, order kit 123306

Note 1: Wheel Nut & Lock Kit #121343 contains 2 each 119881 outer nut, 119882 inner nut, 119883 nut lock and instruction sheet. This kit is recommended when servicing all D381 thru D451 axles. However, the individual parts are not interchangeable with existing parts.

**Hub Bearing Adjuster Nut Wrench is available, nut 19186, use wrench 15751; nut 11249, use wrench 24042.

Differential Carrier Assemblies

These carrier assemblies are complete, less input yoke and shift units.

Forward Axle

	DT341	*DT341-P	DT402	DT402-P	DT451-P
			Involute Splines		
Gear Ratio	39	39	41	41	33
3.55/4.83	951210	951232	951221	951243	951254
3.70/5.05	951211	951233	951222	951244	951255
3.90/5.32	951917	951918	951919	951920	951921
4.11/5.61	951212	951234	951223	951245	951256
4.33/5.91	951213	951235	951224	951246	951257
4.56/6.21	951214	951236	951225	951247	951258
4.88/6.65	951215	951237	951226	951248	951259
5.29/7.21	951216	951238	951227	951249	951260
5.57/7.60	951217	951239	951228	951250	951261
6.14/8.38	951218	951240	951229	951251	951262
6.50/8.86	951219	951241	951230	951252	951263
7.17/9.77	951220	951242	951231	951253	951264

Rear Axle

	RT341	RT402	RT451	
			Involute Splines	
Gear Ratio	39	41	33	
3.55/4.83	951356	951367	951378	
3.70/5.05	951357	951368	951379	
3.90/5.32	951922	951915	951923	
4.11/5.61	951358	951369	951380	
4.33/5.91	951359	951370	951381	
4.56/6.21	951360	951371	951382	
4.88/6.65	951361	951372	951383	
5.29/7.21	951362	951373	951384	
5.57/7.60	951363	951374	951385	
6.14/8.38	951364	951375	951386	
6.50/8.86	951365	951376	951387	
7.17/9.77	951366	951377	951388	

Forward Axle

	DP341	*DP341-P	DP402	DP402-P	DP451-P
			Involute Splines		
Gear Ratio	39	39	41	41	33
4.83	951265	951287	951276	951298	951309
5.05	951266	951288	951277	951299	951310
5.32	—	—	—	—	—
5.61	951267	951289	951278	951300	951311
5.91	951268	951290	951279	951301	951312
6.21	951269	951291	951280	951302	951313
6.65	951270	951292	951281	951303	951314
7.21	951271	951293	951282	951304	951315
7.60	951272	951294	951283	951305	951316
8.38	951273	951295	951284	951306	951317
8.86	951274	951296	951285	951307	951318
9.77	951275	951297	951286	951308	951319

Rear Axle

	RP341	RP402	RP451	
			Involute Splines	
Gear Ratio	39	41	33	
4.83	951389	951400	951411	
5.05	951390	951401	951412	
5.32	—	951916	—	
5.61	951391	951402	951413	
5.91	951392	951403	951414	
6.21	951393	951404	951415	
6.65	951394	951405	951416	
7.21	951395	951406	951417	
7.60	951396	951407	951418	
8.38	951397	951408	951419	
8.86	951398	951409	951420	
9.77	951399	951410	951421	

*Available with inter-axle differential lube pump only on a service basis.

Differential Carrier Assemblies – Hybrid Models

These hybrid differential carrier assemblies were introduced in 1985. Because of Spicer's unique interchangeability, one hybrid tandem replaces both first and second generation tandems in the same ratio and gearing type. These new carriers contain old straight spline side gears (except 400, 401 and 451 series which use the same side gears). New yokes are required to use the new carrier (see Yoke Selection Instructions).

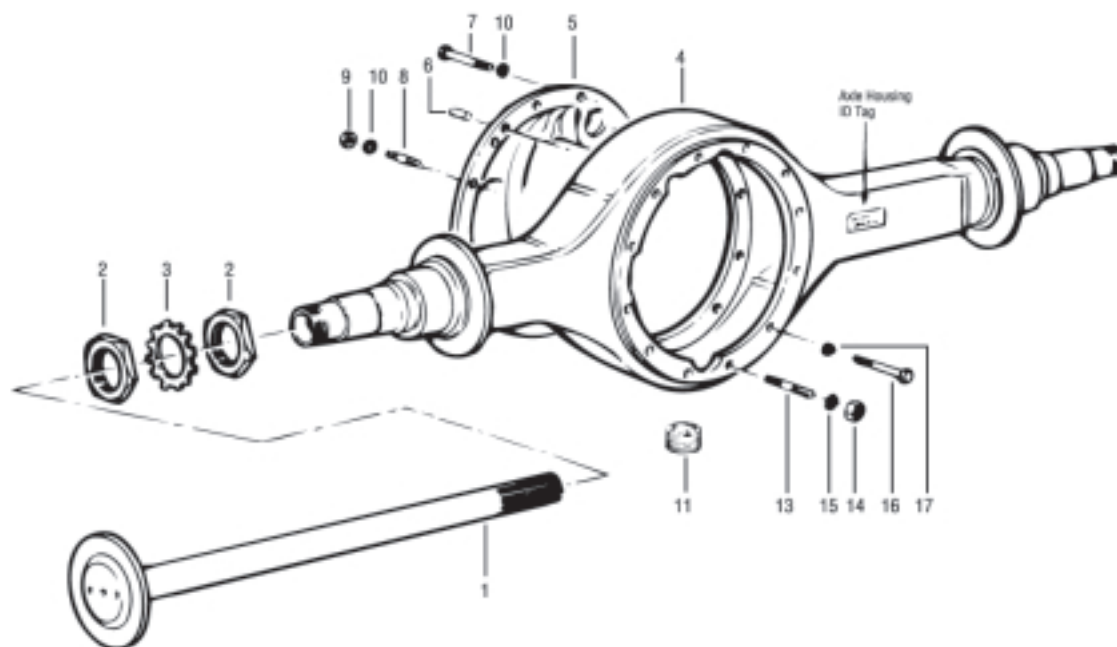
Replaces:	Hybrid DT341 34DT DT340	Hybrid DT341-P DT340-P	Hybrid DT402 38DT DT380 DT381	Hybrid DT402-P DT380-P DT381-P	DT451-P DT400-P DT401-P	Hybrid RT341 34RT RT340	Hybrid RT402 38RT RT380 RT381	RT451 RT400 RT401
------------------	--	---------------------------------------	--	---	--	--	--	----------------------------------

Gear Ratio	Splines							
	16	16	16	16	33 Inv	16	16	33 Inv
3.55/4.83	951729	951740	951831	951842	951254	951751	951853	951378
3.70/5.05	951730	951741	674607	951843	674622	951752	674608	674624
3.90/5.32	—	—	—	—	674623	—	—	674625
4.11/5.61	951731	951742	674506	951844	674484	951753	674508	674486
4.33/5.91	951732	951743	674507	951845	674485	951754	674509	674487
4.56/6.21	951733	951744	674454	951846	951755	674455	674541	674511
4.88/6.65	951734	951745	674562	951847	674776	951756	674563	674541
5.29/7.21	951735	951746	951837	951848	951260	951757	951859	674542
5.57/7.60	951736	951747	951838	951849	951261	951758	951860	674543
6.14/8.38	674594	951748	674588	951850	951262	674597	674591	951386
6.50/8.86	674595	951749	674589	951263	674598	674592	951387	951387
7.17/9.77	674596	951750	674590	951852	951264	674599	674593	951388

Replaces:	Hybrid DP341 34DP DP340	Hybrid DP341-P DP340-P	Hybrid DP402 38DP DP380 DP381	Hybrid DP402-P DP380-P DP381-P	DP451-P DP400-P DP401-P	Hybrid RP341 34RP RP340	Hybrid RP402 38RP RP380 RP381	RP451 RP400 RP401
------------------	--	---------------------------------------	--	---	--	--	--	----------------------------------

Gear Ratio	Splines							
	16	16	16	16	33 Inv	16	16	33 Inv
4.83	951762	951773	951864	951875	951309	951784	951886	951411
5.05	951763	951774	951865	951876	951310	951785	951887	951412
5.32	—	—	—	—	—	—	—	—
5.61	951764	951775	951866	951877	951311	951786	951888	951413
5.91	951765	951776	951867	951878	951312	951787	951889	951414
6.21	951766	951777	951868	951879	951313	951788	051890	951415
6.65	951767	951778	951869	951880	951314	951789	951891	951416
7.21	951768	951779	951870	951881	951315	951790	951892	951417
7.60	951769	951780	951871	951882	951316	951791	951893	951418
8.38	951770	951781	951872	951883	951317	951792	951894	951419
8.86	951771	951782	951873	951884	951318	951793	951895	951420
9.77	951772	951783	951874	951885	951319	951794	951896	951421

Differential Carrier Assembly Attaching Parts



Spline Count	Part No.	Spline "OD"	Length	Flange Holes	Where Used Models:	OEM Reference
16	56980	1.980	40 29/32"	12 (.783") taper holes	34D, D340	
16	62165	1.980	41 5/16"	12 (.750") taper holes	34D, D340	
16	76917	2.125	41 5/16"	6 (.635") thru holes	38D, DS380 (P)	
16	80929	2.125	40 5/8"	6 (.843") taper holes	38D, DS380 (P)	
16	56981	2.125	40 1/8"	8 (.760") thru holes	38D, DS380 (P)	
16	62166	2.125	41 5/16"	6 (.948") taper holes	38D, DS380 (P)	
16	81216	2.125	41 19/32"	8 (.948") taper holes	38D, DS380 (P)	
33	99407	2.125	41 7/32"	8 (.635") thru holes	D400-P, D401-P, D451-P	2, 5, 6
33	91133	2.125	41 3/8"	8 (.635") thru holes	D400-P, D401-P, D451-P	6
33	94224	2.125	40 13/32"	8 (.750") thru holes	D400-P, D401-P, D451-P	
33	88192	2.125	41 3/8"	8 (.640") taper holes	D400-P, D401-P, D451-P	1
39	110882	2.000	40 29/32"	12 (.783") taper holes	D341	1
39	110886	2.000	41 5/16"	12 (.745") taper holes	D341	3
41	110883	2.100	41 5/16"	8 (.640") taper holes	D381 (P), D402 (P)	3, 7
41	110888	2.100	41 5/16"	8 (.635") thru holes	D381 (P), D402 (P)	2, 5, 6
41	110887	2.100	40 1/8"	8 (.760") thru holes	D381 (P), D402 (P)	
41	110884	2.100	41 19/32"	8 (.948") taper holes	D381 (P), D402 (P)	1
41	126877	2.100	40 5/8"	8 (.948") taper holes	D381 (P), D402 (P)	1
41	127008	2.100	44 3/8"	8 (.635") thru holes	D381 (P), D402 (P)	5, 6

*OEMS — 1-Ford, 2-Freightliner, 3-GMC, 4-Navistar, 5-Kenworth, 6-Peterbilt, 7-White.

34/38 Series**340/380/400 Series****RT/RP341, 381, 401, 402, 451****DT/DP341, 381, 401, 402, 451**

.623"-91552	.634"-91564	.645"-91602	.472"-110736	.484"-110748	.496"-110784
.624"-91553	.635"-91566	.646"-91604	.473"-110737	.485"-110749	.497"-110788
.625"-91554	.636"-91568	.647"-91606	.474"-110738	.486"-110750	.498"-110790
.626"-91555	.637"-91572	.648"-91608	.475"-110739	.487"-110752	.499"-110792
.627"-91556	.638"-91576	.649"-91610	.476"-110740	.488"-110754	.500"-110794
.628"-91577	.639"-91580	.650"-91611	.477"-110741	.489"-110756	.501"-110796
.629"-91558	.640"-91584	.651"-91612	.478"-110742	.490"-110760	.502"-110798
.630"-91559	.641"-91588	.652"-91613	.479"-110743	.491"-110764	.503"-110799
.631"-91560	.642"-91592	.653"-91614	.480"-110744	.492"-110768	.504"-110800
.632"-91561	.643"-91596	.654"-91615	.481"-110745	.493"-110772	.505"-110801
.633"-91562	.644"-91600		.482"-110746	.494"-110776	.506"-110802
			.483"-110747	.495"-110780	.507"-110803

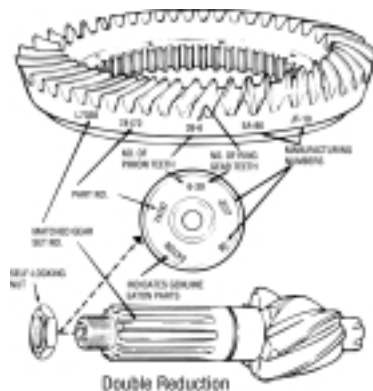
Ring Gear and Pinion Identification – Forward Axles

Pinion Spline: 41
Pinion Diameter: 2.100"

Ring Gear and Drive Pinion are matched parts and must be replaced in sets.

Complete identification is stamped on both parts as shown.

Gear Set Part No# includes drive pinion nut.



Gear Set Ratio	Part No.	Gear Part No.	Pinion Part No.
DT/DP 341/381/401/402/451			
3.55/4.83*	111186	109865 (39T)	111139 (11T)
3.70/5.05*	111187	53864 (37T)	111140 (10T)
3.90/5.32	113528	113154 (39T)	111141 (10T)
4.11/5.61	111188	85390 (37T)	111142 (9T)
4.33/5.91	111189	95392 (39T)	111143 (9T)
4.56/6.21	111190	85394 (41T)	111144 (9T)
4.88/6.65	111191	85396 (39T)	111145 (8T)
5.29/7.21	111192	85398 (37T)	111146 (7T)
5.57/7.60	111193	85400 (39T)	111147 (7T)
6.14/8.38	111194	75170 (43T)	111148 (7T)
6.50/8.86	111195	75172 (39T)	111149 (6T)
7.17/9.77	111196	75174 (43T)	111150 (6T)
DT/DP 340, 380, 400			
3.55/4.83	—	—	—
3.70/5.05*	95547	53864 (37T)	53863 (10T)
4.11/5.61	95567	85390 (37T)	85391 (9T)
4.33/5.91	95568	85362 (39T)	85393 (9T)
4.56/6.21	95569	85394 (41T)	85395 (9T)
4.88/6.65	95570	85396 (39T)	85397 (8T)
5.29/7.21	95571	85398 (37T)	85399 (7T)
5.57/7.60	95572	85400 (39T)	85401 (7T)
6.14/8.38	95573	75170 (43T)	85403 (7T)
6.50/8.86	95574	75172 (39T)	85405 (6T)
7.17/9.77	95575	75174 (43T)	85407 (6T)
34/38 DTB/DPB-C & DTD/DPD-E			
3.70/5.05*	95547	53864 (37T)	53863 (10T)
4.11/5.61*	95548	53871 (37T)	53870 (9T)
4.33/5.91*	95549	48233 (39T)	48234 (9T)
4.56/6.21*	95550	48435 (41T)	48406 (9T)
4.88/6.65*	95551	47241 (39T)	46972 (8T)
5.29/7.21*	95552	62099 (37T)	62094 (7T)
5.57/7.60*	95553	47242 (39T)	46973 (7T)
6.14/8.38	95554	75170 (43T)	74795 (7T)
6.50/8.86	95555	75172 (39T)	74797 (6T)
7.17/9.77	95556	75174 (43T)	74799 (6T)
Gear sets with 1/2" bolt holes in ring gear.			
6.14/8.38*	99662	45749 (43T)	46974 (7T)
6.50/8.86*	99663	47243 (39T)	46975 (6T)
7.17/9.77*	99664	47244 (43T)	46976 (6T)

*16" Gearing all others 16-1/2 gearing

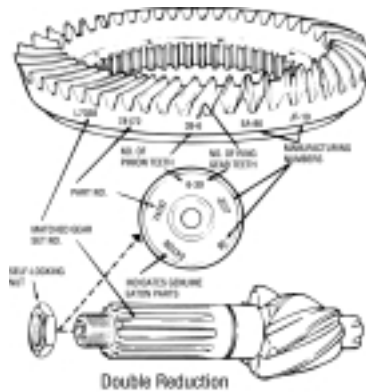
Ring Gear and Pinion Identification – Rear Axles

Pinion Spline: 39
Pinion Diameter: 2.000"

Ring Gear and Drive Pinion are matched parts and must be replaced in sets.

Complete identification is stamped on both parts as shown.

Gear Set Part No# includes drive pinion nut.



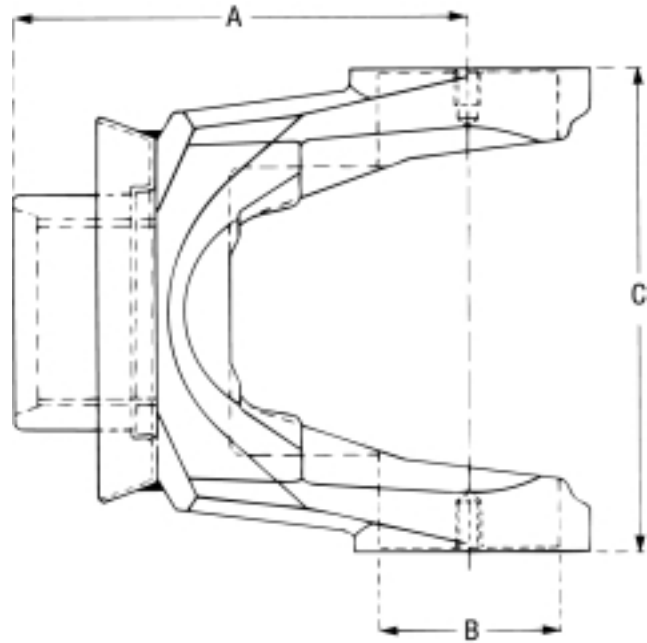
Gear Set Ratio	Part No.	Gear Part No.	Pinion Part No.
RT/RP 341/381/401/402/451			
3.55/4.83*	111513	109864 (39T)	111466 (11T)
3.70/5.05*	111514	53867 (37T)	111467 (10T)
3.90/5.32	113526	113519 (39T)	111468 (10T)
4.11/5.61	111515	85110 (37T)	111469 (9T)
4.33/5.91	111516	85112 (39T)	111470 (9T)
4.56/6.21	111517	85114 (41T)	111471 (9T)
4.88/6.65	111518	85116 (39T)	111472 (8T)
5.29/7.21	111519	85118 (37T)	111473 (7T)
5.57/7.60	111520	79196 (39T)	111474 (7T)
6.14/8.38	111521	66850 (43T)	111475 (7T)
6.50/8.86	111522	66852 (39T)	111476 (6T)
7.17/9.77	111523	66854 (43T)	111477 (6T)
RT/RP 340, 380, 400			
3.55/4.85	—	—	—
3.70/5.05*	96833	53867 (37T)	53868 (10T)
4.11/5.61	98115	85110 (37T)	85111 (9T)
4.33/5.91	98116	85112 (39T)	85113 (9T)
4.56/6.21	98117	85114 (41T)	85115 (9T)
4.88/6.65	98118	85116 (39T)	85117 (8T)
5.29/7.21	98119	85118 (37T)	85119 (7T)
5.57/7.60	98120	79196 (38T)	85121 (7T)
6.14/8.38	98121	66850 (43T)	85123 (7T)
6.50/8.86	98122	66852 (39T)	85125 (6T)
7.17/9.77	98123	119026 (43T)	85127 (6T)
34/38 RTB/RPB-C & RTD/RPD-E			
3.70/5.05	96833*	53867 (37T)	53868 (10T)
4.11/5.61	96834*	53874 (37T)	53375 (9T)
4.33/5.91	96835*	47346 (39T)	47347 (9T)
4.56/6.21	96836*	48436 (41T)	48437 (9T)
4.88/6.65	96837*	38860 (39T)	38861 (8T)
5.29/7.21	96838*	62101 (37T)	62102 (7T)
5.57/7.60	96839*	38862 (39T)	38863 (7T)
5.57/7.60	96840	79196 (39T)	127316 (7T)
6.14/8.38	96841	66850 (43T)	66839 (7T)
6.50/8.86	96842	66852 (39T)	66842 (6T)
7.17/9.77	96843	119026 (43T)	119027 (6T)
Gear sets with 1/2" bolt holes in ring gear:			
6.14/8.38	99666*	41995 (43T)	41996 (7T)
6.50/8.86	99667*	37971 (39T)	37972 (6T)
7.17/9.77	99668*	39746 (43T)	39747 (6T)

*16" Gearing all others 16-1/2 gearing

Yoke Selection Guide for Hybrid Differential Carrier

34D/38D and D340/380/400 carrier assemblies can be replaced by new D341/402/451 carrier assemblies. These new carriers contain old straight spline side gears (except 400, 401 and 451 series which use the same side gears).

New yokes (shown below) are required to use the new carrier. With your old yokes removed, measure the dimensions shown and choose new yokes to match your old yoke dimensions.



Forward Axle

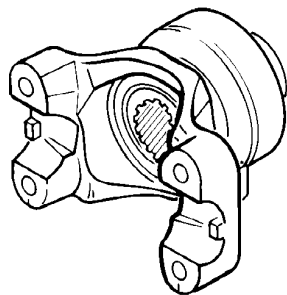
	Old A Dim.	A Dim.	B Dim.	C Dim.	Part Number
Input w/mudslinger-44 involute splines					
1710		5.190"	1.939"	6.093"	213169
1760		5.250"	1.939"	7.001"	213170
1810		5.250"	1.939"	7.551"	213168
Output w/mudslinger - 34 involute splines					
1610	4.748"	4.938"	1.876"	5.312"	213178
1610	6.000"	6.190"	1.876"	5.312"	213175
1710	5.250"	5.440"	1.939"	6.093"	213176
1710	6.123"	6.313"	1.939"	6.093"	213177

Rear Axle

	A Dim.	B Dim.	C Dim.	Part Number
Input w/mudslinger - 39 involute splines				
1610	4.718"	1.876"	5.312"	213183
1610	5.310"	1.876"	5.312"	213182
1610	6.000"	1.876"	5.312"	213180
1710	5.250"	1.939"	6.093"	213181
1710	6.125"	1.939"	6.093"	213179

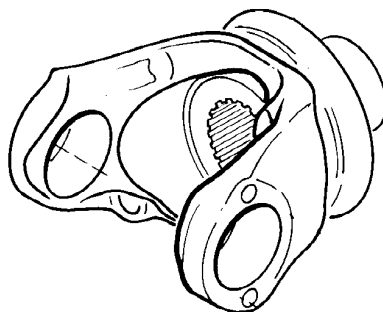
NOTE: The "A" Dimension on old-style output yokes will be .190" shorter because of the elimination of the rear bearing retaining washer on the new family of axles.

STYLE X



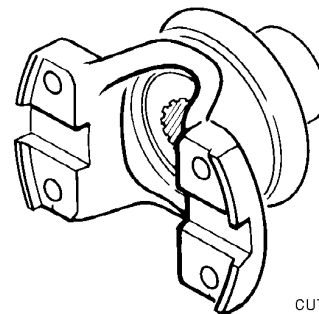
Thru Holes

STYLE Y



Full Round

STYLE Z



Tapped Holes/
BRG Strap

CUT 61904-9/92

For Models: All Series

Yoke Spline	Spline Dim.	Yoke Series	Joint Angle	Style	Yoke & Slinger Part No.	Oil Seal	Yoke & Oil Seal Kit Part No.
44 Inv.	2.25"	1610	22°	Z	127750	127719	213172
		1710	27.5°	Y	127754		213169
		1710	27.5°	Z	127752		213174
		1760	-30°	Y	127755		213170
		1760	-30°	Z	127751		213173
		1810	-30°	Y	127753		213168
		1810	-30°	Z	127749		213171
34 Inv.	1.75"	1610	29.5°	Y	127741	127720	213178
		1610	-45°	Y	127738		213175
		1710	-45°	Y	127740		213177
		1710	33.5°	Y	127739		213176
		1710	33.5°	Y	127746		213183
39 Inv.	1.95"	1610	-23°	Y	127745	127721	213182
		1610	35.5°	Y	127745		213182
		1610	-45°	Y	127743		213180
		1710	33.5°	Y	127744		213181
		1710	-45°	Y	127742		213179
		72N/7C	—	X	111539		—

Yoke Replacement Chart

111238 order 213177
 111239 order 213175
 111240 order 213176
 111241 order 213178

111525 order 213168
 111527 order 213169
 111529 order 213170
 111531 order 213179

111533 order 213180
 111535 order 213181
 111537 order 213182
 111541 order 213183

119645 order 213175
 126298 order 213176
 126630 order 213177
 126633 order 213178

Service Kits & Assemblies

Number Description

123216	Air Lockout Assy. - w/pump
123217	Air Lockout Assy. - w/o pump
58421	Air Lockout Assy. - Non-current w/o lube pump
104600	Air Lockout Assy. - Non-current w/lube pump
96919	Air Lockout Assy. - REV Air - Non-current w/o lube pump
107621	Air Lockout Assy. - REV Air - Non-current w/lube pump
34779	Air Lockout Body Kit - Non-current w/o lube pump
104599	Air Lockout Body Kit - Non-current w/lube pump
121333	Air Lockout Piston Kit - w/o lube pump
121332	Air Lockout Piston Kit - w/lube pump
211198	Air Lockout Repair Kit - w/o lube pump
211197	Air Lockout Repair Kit - w/lube pump
211200	Air Lockout Retrofit Kit - w/o lube pump
211199	Air Lockout Retrofit Kit - w/lube pump
211201	Air Lockout Service Kit - Non-current
211202	Air Lockout Service Kit - Non-current - Rev. Air
78439	Air Shifter Repair Kit
75336	Axle Hsg. Cover Assy.
77750	Axle Hsg. Cover Assy.
107320	Axle Hsg. Cover Assy.
115124	Basic Overhaul Kit - DT/DP 341, 381, 401, 402, 451 series
110584	Basic Overhaul Kit - DT/DP 340, 380, 400 series
110574	Basic Overhaul Kit - 34 DT/DP and 38 DT/DP series
110585	Basic Overhaul Kit - For all "R" series
115125	Bearing Kit - DT/DP 341, 381, 401, 402, 451 series
99045	Bearing Kit - DT/DP 340, 380, 400 series
99054	Bearing Kit - 34 DT/DP and 38 DT/DP
99051	Bearing Kit - For all "R" series
75108	Cage & Cup Assy. - R series
75110	Cage & Cup Assy. - R series
107322	Cage & Cup Assy. - D series
107324	Cage & Cup Assy. - D series
110731	Cage & Cup Assy. - D series
110733	Cage & Cup Assy. - D series
67759	Carr. & Cap Assy. - All R series
115825	Carr. & Cap Assy. - D series - 341, 381, 401, 402, 451 series
120925	Carr. & Cap Assy. - D series - 340, 380, 400 series
120926	Carr. & Cap Assy. - D series - 34/38 series
60608	Clutch Plate Kit
27838	Gear Support Case

Number Description

110148	Gear Support Case
116568	Gear Support Case Kit
113561	Helical Gear Conversion Kit
85423	Input Brg./Cover Assy. w/o lube pump
86813	Input Brg./Cover Assy. w/o lube pump
102629	Input Brg./Cover Assy. w/lube pump
110826	Input Brg./Cover Assy. w/o lube pump
110808	Input Brg./Cover Assy. w/lube pump
211634	Input Brg./Cover Assy. w/o lube pump
211888	Input Brg./Cover Assy. w/lube pump
98693	Input Shaft Kit - w/o lube pump - 10 spline
103289	Input Shaft Kit - w/o lube pump - 16 spline
106709	Input Shaft Kit - w/lube pump - 16 spline
115122	Input Shaft Kit - w/o lube pump - 44 spline
115126	Input Shaft Kit - w/lube pump - 44 spline
95213	Inter-Axle Differential Assy. - 34 DT/DP and 38 DT/DP series
104509	Inter-Axle Differential Assy. - Non-current
213608	Inter-Axle Differential Assy. - Current production
94810	Inter-Axle Differential Case Kit - use on 104509
91850	Inter-Axle Differential Case Kit - use on 95213
106368	Lube Pump Replacement Kit
87955	Nut & Bolt Kit
114104	Oil Seal & Shim Kit - R series
114395	Oil Seal & Shim Kit - D series
212139	Oil Seal Driver Installation Kit
98603	Output Shaft Kit - 10 spline
115123	Output Shaft Kit - 34 spline
107276	RTV Sealant
101878	Wheel Differential Case Kit - D & R Series
85358	Wheel Diff. Side Gear Kit - 16 Str.
98850	Wheel Diff. Side Gear Kit - 16 Str.
98853	Wheel Diff. Side Gear Kit - 33 Inv.
114469	Wheel Diff. Side Gear Kit - 39 Inv.
114470	Wheel Diff. Side Gear Kit - 41 Inv.
118748	Wheel Diff. Kit - Less Side Gears

034779	Lockout Parts	078439	Air Shift Valve Repair Kit	1	108223	Pipe Bushing		
1	032826	"O" Ring	1	066454	Shift Valve	1	111406	Washer
1	032828	Sh Cyl Body	1	066455	"O" Ring	1	126705	Comp Spring
1	032831	Cyl Cover	1	074860	Valve Actuator	1	599792	Plug Plastic
1	032832	"O" Ring	1	074861	Valve Spring	098603	Output Shaft, Bushing & Nut	
1	032834	Piston	1	074863	Valve Lock	2	046526	"O" Ring
1	060817	"O" Ring	085358	Wheel Diff Kit 16 STR	1	095205	Nut	
2	096916	Felt	4	027810	Thrust Washer	1	109067	Tag-Nut Torque
1	111406	Washer	2	027827	Thrust Washer	1	85441	Output Shaft
058421	Air Lockout Assy - Non Current	2	037069	Side Gear	1	45468	Bushing	
1	031038	Compression Spring	1	038289	Diff Spider	098693	Input Shaft & Nut	
1	032826	"O" Ring	4	104139	Side Pinion	1	088285	Input Dr Shaft
1	032828	Sh Cyl Body	091850	Pdu Inter-Axle Diff Case Kit	1	095206	Nut	
1	032831	Cyl Cover	8	057637	Nut	1	109068	Tag-Nut Torque
1	032832	"O" Ring	8	085438	Bolt	098850	Wheel Diff Kit 16 STR	
1	032834	Piston	2	088029	Diff Case Inter	4	027810	Thrust Washer
1	045859	Shift Fork Assy	094810	Pdu Inter-Axle Diff Case Kit	2	027827	Thrust Washer	
1	060817	"O" Ring	8	057637	Nut	2	037072	Side Gear
4	079363	Capscrew	8	085438	Bolt	1	038289	Diff Spider
2	090031	Capscrew	2	102621	Diff Case Inter	4	104139	Side Pinion
1	090206	Nut	095213	Inter-Axle Diff Assy	4	027810	Thrust Washer	
1	090322	Plug	4	025968	Thrust Washer	2	027827	Thrust Washer
2	090415	Lockwasher	8	057637	Nut	1	038289	Diff Spider
4	090419	Washer	8	085438	Bolt	2	085486	Side Gear
2	096916	Felt	2	088029	Diff Case Inter	4	104139	Side Pinion
1	111406	Washer	4	095210	Side Pinion	098853	Wheel Diff Kit 33 INV	
060608	Sliding Clutch Parts	4	095211	Side Pinion Bushing	4	027810	Thrust Washer	
1	043270	Thrust Washer	1	095212	Diff Spider Tandem	2	027827	Thrust Washer
1	056931	Clutch Plate	096919	Air Lockout Assy - Nav Rev Air	1	038289	Diff Spider	
1	056932	Diff Brg Adjuster	1	032831	Cyl Cover	2	085486	Side Gear
1	113596	Sl Cl Gear	1	032832	"O" Ring	4	104139	Side Pinion
067759	Diff Carrier & Brg Cap Kit	1	049014	Plug Plastic	099045	Bearing Kit w/Oil Seal		
1	009797	Exp Plug	1	060817	"O" Ring	1	009803	Bearing Cup
1	030703	Exp Plug	4	079363	Capscrew	2	014217	Bearing Cup
1	032611	Shift Fork Cover	2	090031	Capscrew	1	015828	Bearing
2	037746	Dowel Bushing	1	090206	Nut	1	027813	Bearing Cone
1	045521	Shift Box Cover	2	090415	Lockwasher	1	027816	Bearing Cup
2	063028	Nut	4	090419	Washer	1	027817	Bearing Cone
2	090538	Lock Wire	1	096715	Shift Fork Assy	2	045460	Bearing Cone
1	107276	Sealant RTV	1	096911	"O" Ring	1	051232	Bearing Cup
1	113801	Sh Fork Shaft Ay	1	096912	Ring	1	051233	Bearing Cone
2	032730	Dowel Bush	1	096913	Sh Cyl Body	1	085424	Bearing Cup
2	032732	Capscrew	1	096915	Piston	1	085425	Bearing Cone
4	032912	Washer	2	096916	Felt	1	085439	Bearing Cone
1	037744	Diff Bearing Cap L.H.	1	107276	Sealant RTV	1	107276	Sealant RTV
1	068841	Diff Bearing Cap R.H.	1	118789	Inner Bearing Race	1	118789	Inner Bearing Race
1	106411	Diff Carrier	1	118790	Outer Brg Race	1	118790	Outer Brg Race
2	127180	Capscrew	1	119429	Oil Seal	1	119429	Oil Seal
1	119855	Seal Spring Assy	1	119431	Oil Seal	1	119431	Oil Seal
2	119857	Flatwasher						
2	119863	Stud						

Appendix

099051	Bearing Kit w/Oil Seal	104600	Air Lockout Assy - Non Current	1	108223	Pipe Bushing		
1	009803	Bearing Cup		1	111406	Washer		
2	012495	Bearing Cup	1	031038	Compression Spring	1	126705	Comp Spring
2	012496	Bearing Cone	1	032826	"O" Ring	1	599792	Plug Plastic
1	015828	Bearing	1	032828	Sh Cyl Body			
1	027813	Bearing Cone	1	032831	Cyl Cover	110574	Basic Overhaul Kit	
1	027816	Bearing Cup	1	032832	"O" Ring	1	004327	Flat Washer
1	027817	Bearing Cone	1	032834	Piston	1	009797	Exp Plug
1	107276	Sealant RTV	1	060817	"O" Ring	1	009803	Bearing Cup
1	119427	Oil Seal	4	079363	Capscrew	2	014217	Bearing Cup
			2	090031	Capscrew	1	015828	Bearing
099054	Bearing Kit w/Oil Seal	1	090206	Nut	4	025968	Thrust Washer	
1	009803	Bearing Cup	1	090322	Plug	4	027810	Thrust Washer
2	014217	Bearing Cup	2	090415	Lockwasher	1	027813	Bearing Cone
1	015828	Bearing	4	090419	Washer	1	027816	Bearing Cup
1	027813	Bearing Cone	2	096916	Felt	1	027817	Bearing Cone
1	027816	Bearing Cup	1	102613	Shift Fork Assy	3	027827	Thrust Washer
1	027817	Bearing Cone	1	102616	Piston Stop	1	030703	Exp Plug
2	045460	Bearing Cone	1	111406	Washer	1	043270	Thrust Washer
1	051232	Bearing Cup	106368	Lube Pump Parts	2	045460	Bearing Cone	
1	051233	Bearing Cone	4	090419	Washer	1	045461	Shim .003
1	083462	Bearing Cup	1	102607	Oil Pump Cover	1	045462	Shim .010
1	083469	Bearing Cone	2	102617	Dowel Pin	1	045463	Shim .030
1	107276	Sealant RTV	4	102618	Capscrew	1	045477	Washer
1	118789	Inner Bearing Race	1	102620	"O" Ring	1	045478	Washer
1	118790	Outer Brg Race	1	102625	Pump Gr & Shft Assy	1	045498	Shim .003
2	119431	Oil Seal	1	111448	Oil Pump Drive Gear	1	045499	Shim .010
			1	111451	Locknut	1	045516	Snap Ring
103289	Input Shaft, "D" Washer & Nut	1	111779	Pump Gr & Shft Assy	2	046526	"O" Ring	
1	045478	Washer	106709	Input Shaft & Nut	1	046583	Washer	
1	095207	Nut	1	095207	Nut	1	046983	Snap Ring
1	103283	Input Dr Shaft	1	102608	Input Dr Shaft	2	048921	Bushing
1	109069	Tag-Nut Torque	1	109069	Tag-Nut Torque	1	048922	Service Bushing
			107621	Air Lockout Assy - Nav Rev Air	1	051232	Bearing Cup	
104509	Inter Axle Diff. Assembly - Non Current	1	032831	Cyl Cover	1	051233	Bearing Cone	
8	057637	Nut	1	032832	"O" Ring	1	056864	Washer
4	085437	Washer	1	049014	Plug Plastic	1	062829	Shim .005
8	085438	Bolt	1	060817	"O" Ring	1	062830	Shim .020
4	095214	Side Pinion	4	079363	Capscrew	1	067827	Oil Trough
4	095215	Side Pinion Bushing	2	090031	Capscrew	1	070709	Shim .005
1	095216	Diff Spider Tandem	1	090206	Nut	1	083462	Bearing Cup
2	102621	Diff Case Inter	2	090415	Lockwasher	1	083469	Bearing Cone
			4	090419	Washer	1	085406	Shim .020
104599	Air Lockout Parts Kit - Non Current	1	096911	"O" Ring	2	085994	Snap Ring	
1	032826	"O" Ring	1	096912	Ring	4	095211	Side Pinion Bushing
1	032828	Sh Cyl Body	1	096913	Sh Cyl Body	1	107276	Sealant RTV
1	032831	Cyl Cover	1	096915	Piston	1	118789	Inner Bearing Race
1	032832	"O" Ring	2	096916	Felt	1	118790	Outer Brg Race
1	032834	Piston	1	107620	Shift Fork Assy	2	119431	Oil Seal
1	060817	"O" Ring				1	119855	Seal Spring Assy
2	096916	Felt						
1	102616	Piston Stop						
1	111406	Washer						

110584 Basic Overhaul Kit

1	004327	Flat Washer
1	009797	Exp Plug
1	009803	Bearing Cup
2	014217	Bearing Cup
1	015828	Bearing
4	027810	Thrust Washer
1	027813	Bearing Cone
1	027816	Bearing Cup
1	027817	Bearing Cone
3	027827	Thrust Washer
1	030703	Exp Plug
1	043270	Thrust Washer
2	045460	Bearing Cone
1	045461	Shim .003
1	045462	Shim .010
1	045463	Shim .030
1	045478	Washer
1	045498	Shim .003
1	045499	Shim .010
1	045516	Snap Ring
2	046526	"O" Ring
1	046583	Washer
1	048922	Service Bushing
1	051232	Bearing Cup
1	051233	Bearing Cone
1	062829	Shim .005
1	062830	Shim .020
1	067827	Oil Trough
1	070709	Shim .005
1	085404	Washer
1	085406	Shim .020
1	085424	Bearing Cup
1	085425	Bearing Cone
1	085427	Spacing Washer
1	085429	Washer
4	085437	Washer
1	085439	Bearing Cone
2	085991	Service Bushing
2	085994	Snap Ring
1	085997	Snap Ring
4	095215	Side Pinion Bushing
1	102620	"O" Ring
1	107276	Sealant RTV
1	118789	Inner Bearing Race
1	118790	Outer Brg Race
1	119429	Oil Seal
1	119431	Oil Seal
1	119855	Seal Spring Assy

110585 Basic Overhaul Kit

1	009797	Exp Plug
1	009803	Bearing Cup
2	012495	Bearing Cup
2	012496	Bearing Cone
1	015828	Bearing
4	027810	Thrust Washer
1	027813	Bearing Cone
1	027816	Bearing Cup
1	027817	Bearing Cone
3	027827	Thrust Washer
1	030703	Exp Plug
1	043270	Thrust Washer
1	067814	Oil Trough
1	107276	Sealant RTV
1	107567	Shim .003
1	107568	Shim .005
2	107569	Shim .010
2	107570	Shim .020
1	119427	Oil Seal
1	119855	Seal Spring Assy

113561 Pinion Helical & Helical Side Gear Kit

1	113556	Helical Gear-Pinion
1	128018	Helical Side Gear
2	85990	Bushings

114104 Oil Seal & Shim Kit

1	107276	Sealant RTV
2	107567	Shim .003
2	107568	Shim .005
2	107569	Shim .010
1	107570	Shim .020
1	119427	Oil Seal
1	119855	Seal Spring Assy

114395 Oil Seal & Shim Kit

2	045461	Shim .003
2	045462	Shim .010
2	045498	Shim .003
1	045499	Shim .010
2	062829	Shim .005
2	062830	Shim .020
2	070709	Shim .005
1	085406	Shim .020
1	107276	Sealant RTV
1	119429	Oil Seal
1	119431	Oil Seal
1	119855	Seal Spring Assy

**114470 Wheel Diff Kit
41 INV**

4	027810	Thrust Washer
2	027827	Thrust Washer
1	038289	Diff Spider
4	104139	Side Pinion
2	110527	Side Gear

115122 Input Shaft Kit

1	045478	Washer
1	095207	Nut
1	109069	Tag-Nut Torque
1	128740	Input Shaft

115123 Output Shaft Kit

2	046526	"O" Ring
1	051228	Spring Thrust Brg
1	051238	Compression Spring
1	095205	Nut
1	109067	Tag-Nut Torque
1	128736	Output Shaft

115124 Basic Overhaul Kit

1	004327	Flat Washer
1	009797	Exp Plug
1	009803	Bearing Cup
1	014217	Bearing Cup
1	015828	Bearing
4	027810	Thrust Washer
1	027813	Bearing Cone
1	027816	Bearing Cup
1	027817	Bearing Cone
3	027827	Thrust Washer
1	030703	Exp Plug
1	035502	Bearing Cup
1	043270	Thrust Washer
1	045461	Shim .003
1	045462	Shim .010
1	045463	Shim .030
1	045478	Washer
1	045498	Shim .003
1	045499	Shim .010
1	045516	Snap Ring
2	046526	"O" Ring
1	048922	Service Bushing
1	062829	Shim .005
1	062830	Shim .020
1	070709	Shim .005
1	085404	Washer
1	085406	Shim .020
1	085429	Washer
4	085437	Washer
1	085439	Bearing Cone
1	085991	Service Bushing
2	085994	Snap Ring
1	085997	Snap Ring
1	091136	Bearing Cone
4	095215	Side Pinion Bushing
1	098388	Bearing Cup
1	102620	"O" Ring
1	107276	Sealant RTV
1	110811	Bearing Cup

Appendix

1	110812	Bearing Cone	2	119857	Flat Washer	4	032912	Washer
1	110846	Bearing Cone	2	119863	Stud	1	037744	Diff Bearing Cap
1	118789	Inner Bearing Race				1	068841	Diff Bearing Cap
1	118790	Outer Brg Race	116568	Gear Support Case	1	110816	Diff Carrier	
1	119429	Oil Seal	1	110148	Supp Case Pot	1	110811	Bearing Cup
1	119431	Oil Seal	1	110243	Diff Brg Adjuster	1	110812	Bearing Cone
1	119855	Seal Spring Assy				1	113801	Sh Fork Shaft Ay
			118748	Wheel Differential Kit - Less Side Gears	1	119855	Seal Spring Assy	
115125	Bearing & Oil Seal Kit		4	027810	Thrust Washer	2	119857	Flat Washer
1	009803	Bearing Cup	2	027827	Thrust Washer	2	119863	Stud
1	014217	Bearing Cup	1	038289	Diff Spider			
1	015828	Bearing	4	104139	Side Pinion	121332	Piston Kit - Air Lockout	
1	027813	Bearing Cone				1	119913	Piston
1	027816	Bearing Cup	120925	Diff Carrier & Brg Cap Kit	1	119923	Housing	
1	027817	Bearing Cone	2	007641	Dowel Pin	1	127675	Bracket - Mount
1	035502	Bearing Cup	1	009797	Exp Plug	1	128160	Nut
1	085439	Bearing Cone	1	030703	Exp Plug	1	210180	"O" Ring
1	091136	Bearing Cone	1	032611	Shift Fork Cover	1	210452	Shoulder Washer
1	098388	Bearing Cup	2	037746	Dowel Bushing	1	599792	Plug Plastic
1	107276	Sealant RTV	1	045521	Shift Box Cover			
1	110811	Bearing Cup	2	063028	Nut	121333	Piston Kit - Air Lockout Parts	
1	110812	Bearing Cone	1	090325	Plug	1	119912	Piston
1	110846	Bearing Cone	4	090538	Lock Wire	1	119923	Housing
1	118789	Inner Bearing Race	1	107276	Sealant RTV	1	127675	Bracket - Mount
1	118790	Outer Brg Race	1	110811	Bearing Cup	1	128160	Nut
1	119429	Oil Seal	2	032730	Dowel Bush	1	210180	"O" Ring
1	119431	Oil Seal	4	032732	Capscrew	1	210452	Shoulder Washer
			4	032912	Washer	1	599792	Plug Plastic
115126	Input Shaft, "D" Washer & Nut		1	037744	Diff Bearing Cap	123216	Air Lockout Assy - Complete w/Lube Pump	
1	045478	Washer	1	068841	Diff Bearing Cap	1	031038	Compression Spring
1	095207	Nut	1	110816	Diff Carrier	2	090415	Lock Washer
1	109069	Tag-Nut Torque	1	110812	Bearing Cone	1	102613	Shift Fork Assy
1	128739	Input Dr Shaft	1	113801	Sh Fork Shaft Ay	1	121332	Air Lockout Parts
			1	119855	Seal Spring Assy	2	210381	Capscrew
115825	Diff Carrier & Brg Cap Kit		2	119857	Flat Washer	1	119913	Piston
2	007641	Dowel Pin	1	119863	Stud	1	119923	Housing
1	009797	Exp Plug	1	119896	Inner Side Gear	1	127675	Bracket - Mount
1	030703	Exp Plug	120926	Diff Carrier & Brg Cap Kit	1	128160	Nut	
1	032611	Shift Fork Cover	2	007641	Dowel Pin	1	210180	"O" Ring
2	037746	Dowel Bushing	1	009797	Exp Plug	1	210452	Shoulder Washer
1	045521	Shift Box Cover	1	030703	Exp Plug	1	599792	Plug Plastic
2	063028	Nut	1	032611	Shift Fork Cover			
1	090325	Plug	2	037746	Dowel Bushing			
4	090538	Lock Wire	1	045521	Shift Box Cover			
1	107276	Sealant RTV	2	063028	Nut			
2	032730	Dowel Bush	1	090325	Plug			
4	032732	Capscrew	4	090538	Lock Wire			
4	032912	Washer	1	107276	Sealant RTV			
1	037744	Diff Bearing Cap	1	110810	Inner Side Gear			
1	068841	Diff Bearing Cap	2	032730	Dowel Bush			
1	110816	Diff Carrier	4	032732	Capscrew			
1	113801	Sh Fork Shaft Assy						
1	119855	Seal Spring Assy						

123217	Air Lockout Assy - Complete Assy w/o Lube Pump	211201	Repair, Air Lockout Parts
1 031038	Compression Spring	1 031038	Compression Spring
1 045859	Shift Fork Assy	1 032826	"O" Ring
2 090415	Lock Washer	1 032832	"O" Ring
2 210381	Capscrew	1 060817	"O" Ring
1 119912	Piston	1 090206	Nut
1 119923	Housing	2 096916	Felt
1 127675	Bracket - Mount	1 102616	Piston Stop
1 128160	Nut	1 107276	Sealant RTV
1 210180	"O" Ring	1 111406	Washer
1 210452	Shoulder Washer	211202	Rev. Air Lockout Repair Kit
1 599792	Plug Plastic	1 032832	"O" Ring
211197	Repair, Air Lockout Parts	1 060817	"O" Ring
1 031038	Compression Spring	1 090206	Nut
1 119913	Piston	1 096911	"O" Ring
1 128160	Nut	1 096912	Ring
1 210180	"O" Ring	2 096916	Felt
1 210452	Shoulder Washer	1 107276	Sealant RTV
211198	Repair, Air Lockout Parts	1 111406	Washer
1 031038	Compression Spring	1 126705	Comp Spring
1 119912	Piston	212139	Oil Seal Driver Installation Kit
1 128160	Nut	1 126917	Driver - Seal
1 210180	"O" Ring	1 127786	Driver - Seal
1 210452	Shoulder Washer	1 127787	Adapter - Seal Driver
211199	Retrofit, Air Lockout Parts Kit	1 213167	Inst Sht (TSB 90-06)
1 031038	Compression Spring	213608	Inter-Axle Diff Assembly - Current Production
2 090415	Lock Washer	8 057637	Nut
2 210381	Capscrew	8 085438	Bolt
1 119913	Piston	4 095214	Side Pinion
1 119923	Housing	1 127783	I.A. Diff Spider
1 127675	Bracket - Mount	2 127784	Diff Case Inter
1 128160	Nut	4 127785	Washer Thrust
1 210180	"O" Ring		
1 210452	Shoulder Washer		
1 599792	Plug Plastic		
211200	Retrofit, Air Lockout Parts		
1 031038	Compression Spring		
2 090415	Lock Washer		
2 210381	Capscrew		
1 119912	Piston		
1 119923	Housing		
1 127675	Bracket - Mount		
1 128160	Nut		
1 210180	"O" Ring		
1 210452	Shoulder Washer		
1 599792	Plug Plastic		

For specifying or service assistance, call 1-877-777-5360 or visit our website at www.dana.com

Dana Commercial Vehicle Products Group

3939 Technology Drive
Maumee, Ohio, USA 43537

www.dana.com



SPICER[®]

Drivetrain Products