

Spicer® Drive Axles

SPICER®



Illustrated Parts List

AXIP-00322

February 2015

Two-Speed-Planetary Double Reduction
19055T/P, 21065T/P, 22065T/P, 23065T/P Model

Table of Contents

General Information	3	Gear and Pinion Kits.....	12
How To Use Illustrated Parts List.....	3	Service Carriers	13
Model Identification.....	4	Yokes and Flanges	14
Two Speed - Planetary Double Reduction.....	6	Electric Shift System.....	15
Axle Housing Parts and Hardware	9	Electric Shift Unit	16
Axle Shafts and Hardware.....	10	Service Kits - Quick Reference Listing	17
Axle Housings.....	10	Service Kits - Bill of Materials	18
Pinion Bearing Spacers	11		

General Information

How To Use Illustrated Parts List

Ordering Parts

- This parts book is organized in sections according to parts servicing requirements. Use the Contents or page headings and colored tabs to find information.
- Use this book to order parts for your Dana® Spicer® Axle.
- For convenience, part numbers have been included for all pieces of the carrier assembly. Some of these parts, such as the carrier and caps, are serviced only in kits or assemblies. Part numbers are for your reference only. Those parts not serviced separately are identified with NSS.

Kits and Assemblies

- Kits and Assemblies contain groups of individual or assembled parts developed for optimal replacement or repair of a service problem.
- Kits and Assemblies are shown with applicable parts groupings in the parts listing.
- See the Appendix for detailed information concerning kits applicable to this model.

Abbreviations

- AR - As Required - Parts that vary in quantity with each axle. Example: shims
- NSS - Not Serviced Separately - Items which can only be purchased in sets, kit form or service assemblies. Example: brake shoes.
- RH/LH - Right Hand/Left Hand - Determined as viewed from behind the vehicle looking forward.
- "RTV" - Gasket Compound - Formed-in-place gasket sealer. It is recommended for use on all surfaces requiring a gasket.
- Assy - Assembly
- Brg - Bearing
- Diff - Differential
- Hsg - Housing
- Inv - Involute
- ABS - Antilock Brake System
- N/A - Not Applicable
- Str - Straight

Illustrations

- Illustrations show parts in assembly groups.
- Item numbers on illustrations correspond with parts listings on pages that accompany the drawings.
- Notes are included on illustrations where needed.

Parts Listings

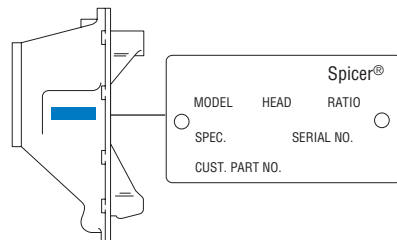
- Parts listings are defined by parts groupings and are broken down by service assemblies.
- Parts Listings identify a part for servicing with the following categories:
- Item - corresponds with numbers on illustrations for part identification
- Part Name - specifies part name or description
- Quantity (Qty) - quantity required for assembly
- Current Part - service part numbers are broken down by model, type or other applicable information
- Notes - define unique characteristics or replacement notes
- Kits / Assy's Where Used - indicates Kits or Assemblies that contain a particular part
- *Other pertinent information is listed in tables or parts listings as required.*

Model Identification

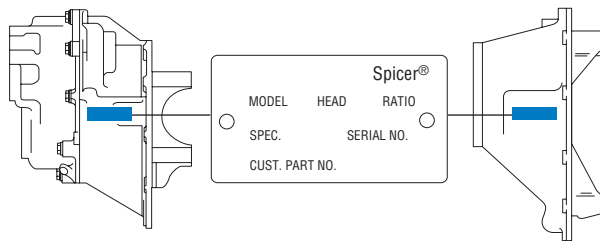
Locating Model Designation Information

- Axle Model Identification, Part Number and Serial Number are located on a tag at the axle centerline. This information will help to locate information in this book and to identify the correct parts for servicing.

Drive Axles



Single Drive Axles

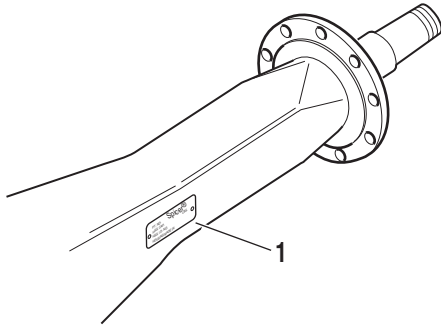


Tandem Drive Axles

- 1 - Country or origin**
- 2 - Axle model identification**
- 3 - Specification number assigned to the axle built by Spicer. Identifies all component parts of the axle including special OEM requirements such as yokes or flanges.**
- 4 - OEM part number assigned to the axle build**
- 5 - Carrier assembly serial number assigned by the manufacturing plant**
- 6 - Axle gear ratio**
- 7 - Carrier assembly production or service part number**

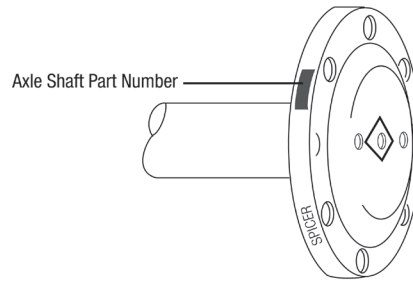
Model Identification

Axle Housing



1 - ID Tag

Axle Shaft



2 - Axle shaft part number

Using Model Designation to Identify Axle Components

The Axle Model Identification number contains information that is important to understand when purchasing service parts or new components. The Model Identification number provides important vehicle, capacity and application information and model features. Use this guideline to understand your Axle Model Identification. If you need assistance, contact your Dana Aftermarket representative.

Effectively using a Parts Listing - Example

- Follow the example below to locate and order exactly what is required for servicing.

Match to items on illustration	Use to identify Part	Order this quantity for servicing	Order Part Number	Indicated information important to ordering or use
Item	Part Name	Qty	MODEL1	MODEL2Notes
1	Axle Shaft	2	xxxxxx	xxxxxx See Axle Shaft Chart
2	Flat Washer	4	xxxxxx	xxxxxx

Kits and Assemblies

Item	Part Name	Qty	MODEL1	MODEL2Notes
Bearing Kits		1	xxxxxx	xxxxxx Contents Identified with *

Models

Single Reduction Models

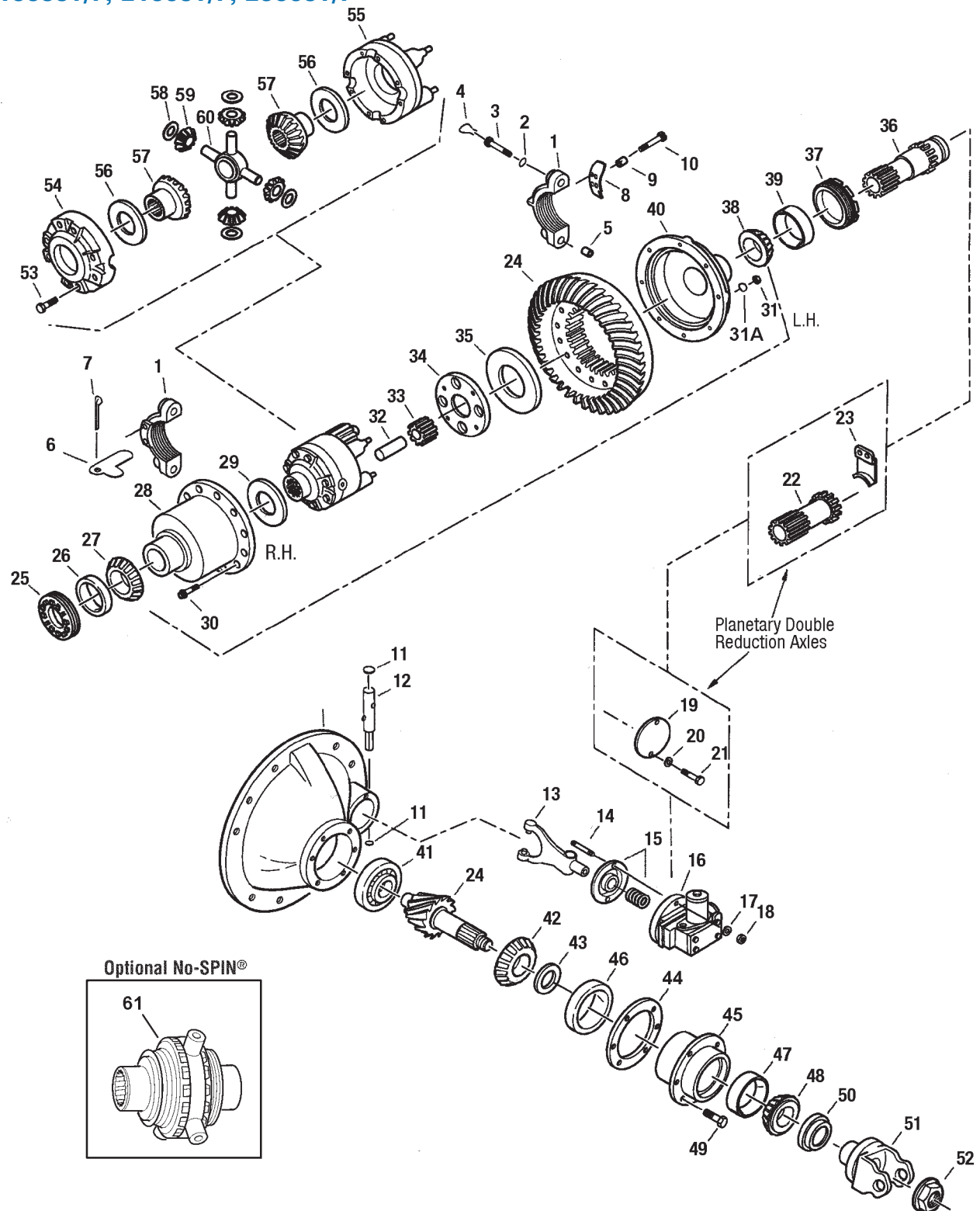
Single Axle*	Axle Capacity	Gear Size
19055T/P	19,000 lbs	17"
21065T/P	21,000 lbs	17"
22065T/P	22,000 lbs	17"
23065T/P	23,000 lbs	17"

*carrier options include T=Two Speed, P=Planetary Double Reduction

Two Speed - Planetary Double Reduction

Two Speed - Planetary Double Reduction

19055T/P, 21065T/P, 23065T/P



Two Speed - Planetary Double Reduction

Two Speed - Planetary Double Reduction

Item No.	Description	Qty. Per Axle	19055T/P 21065T/P 22065T/P 23065T/P	Notes
KIT - BASIC OVERHAUL		1	110635*	Contents identified with *
1	KIT- DIFF CARRIER & BEARING CAPS	1	109365	
	CARRIER SUB-ASSY	1	107494	CARRIER CASTING NO. 107493-(NSS)
2	FLAT WASHER	4	032912	
3	BEARING CAPSCREW	4	032732	
4	LOCKWIRE	4	090538	
5	DOWEL BUSHING	2	032730	
6	BEARING ADJUSTER LOCK - RH	1	013377	
7	COTTER PIN - RH	1	090873	
8	BEARING ADJUSTER LOCK - LH	1	037745	
9	DOWEL BUSHING - LH	2	037746	
10	CAPSCREW - LH	2	210601	
11	EXPANSION PLUG - UPPER	1	030703*	
	EXPANSION PLUG - LOWER	1	009797*	
12	SHIFT FORK SHAFT ASSY	1	113801	
13	SHIFT FORK ASSY	1	032613	
14	SHIFT FORM MOUNTING STUD	2	119863	
15	SHIFT FORK SEAL AND SPRING ASSY	1	119855*	
16	SHIFT UNIT ASSY - ELECTRIC	1		Refer to page 15-16
17	LOCKWASHER	2	119857	
18	STUD NUT	2	063028	
19	SHIFT UNIT OPENING COVER-METAL	1	045521	PDR Models only
20	LOCK WASHER	2	090415	PDR Models only
21	CAP SCREW	2	020807	PDR Models only
22	SUN GEAR	1	113598	PDR Models only
23	SUN GEAR RETAINER	1	043178	PDR Models only
24	RING GEAR AND DRIVE PINION SET - NSS	1		See Kit Listing on page 11
25	DIFF. BEARING ADJUSTER - RH	1	110243	
26	DIFF. BEARING CUP - RH	1	134301*	Replaces 009803 (use in sets)
27	DIFF. BEARING CONE - RH	1	134300*	Replaces 027813 (use in sets)
28	GEAR SUPPORT CASE - RH	1	110148	
29	GEAR SUPPORT THRUST WASHER - RH	1	027827*	
KIT - RING GEAR NUT,BOLT & WASHER		1	087955	Incl. items 30-31A
30	BOLT - RING GEAR	8	044358	
31	NUT - RING GEAR	8	060599	
31A	WASHER	8	129586	
32	IDLER PINION PIN	4	027861	
33	IDLER PINION	4	027835	
KIT - SLIDING CLUTCH SERVICE KIT		1	060608	Incl. items 34-37
34	HIGH SPEED CLUTCH PLATE	1	056931	
35	GEAR SUPPORT THRUST WASHER - LH	1	043270*	
36	SLIDING CLUTCH	1	113596	Two-Speed models only
37	DIFF. BEARING ADJUSTER - LH	1	056932	

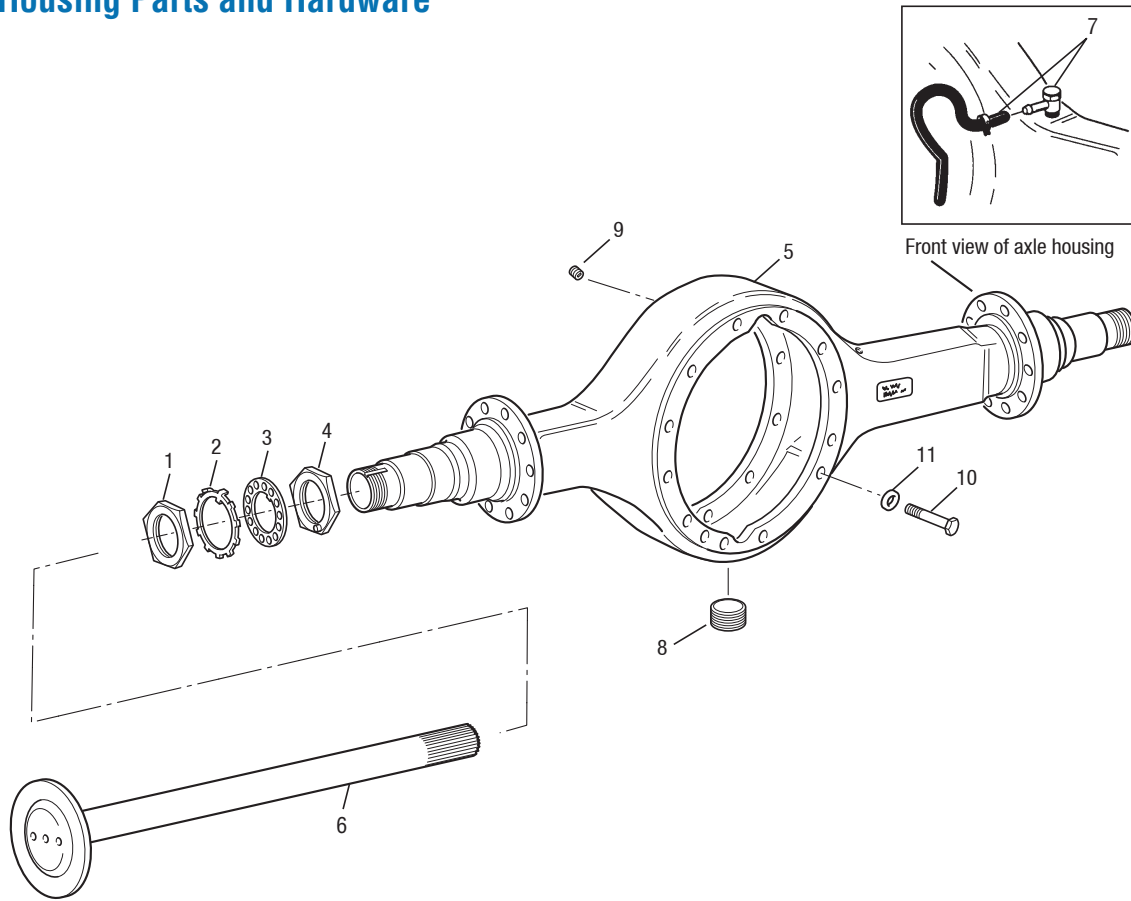
Two Speed - Planetary Double Reduction

Two Speed - Planetary Double Reduction

Item No.	Description	Qty. Per Axle	19055T/P 21065T/P 22065T/P 23065T/P	
38	DIFF. BEARING CONE - LH	1	027817*	
39	DIFF. BEARING CUP - LH	1	027816*	
40	GEAR SUPPORT CASE - LH	1	027838	
41	PINION PILOT BEARING	1	830398*	Replaces 015828 & 129175
42	PINION BEARING CONE - INNER	1	045460*	
43	KIT-PINION BRG SPACER	AR	504016	Individual pinion bearing spacers listed on pg 10
44	PINION BEARING CAGE SHIMS	AR		
	0.003"	1	107567*	
	0.005"	1	107568*	
	0.010"	1	107569*	
	0.020"	1	107570*	
45	PINION BEARING CAGE & CUP ASSY. - STANDARD	1	133875	Cast#107495 Incl. items 46-47
	PARKING BRAKE MODELS		133876	Cast#130875 Incl. items 46-47
46	PINION BEARING CUP - INNER	1	129561*	Replaces 014217 for service
47	PINON BEARING CUP - OUTER	1	012495*	
48	PINION BEARING CONE - OUTER	1	012496*	
49	CAP SCREW	6	113325	
KIT - OIL SEAL & SHIM		1	114104	Incls items 15, 44, 50, 62
50	OIL SEAL - PINION	1	127721*	Microlip design seal
50A	OIL SEAL - PINION	1	119427	Optional seal - triple lip
51	PINION YOKE - 39 SPLINE	1		Refer to page 13
52	PINION NUT	1	127589	
KIT - WHEEL DIFF CASE		1	101878	Incls items 53-55
53	DIFF. CASE CAPSCREW	8	096283	
54	DIFF CASE - RH - NSS	1	096279	
55	DIFF. CASE - LH 4-LEG W/ PIN - 98182-NSS	1	ORDER 101878 KIT	
KIT - WHEEL DIFF SIDE GEAR KIT		1		Incls items 56-60
	19055T 39 INV SPLINE		114469	
	21065T 41 INV SPLINE		114470	
KIT - WHEEL DIFF KIT - LESS SIDE GEAR		1	118748	Incls items 56, 58-60
56	SIDE GEAR THRUST WASHER	2	127386	
57	DIFF. SIDE GEAR - 39 Inv - 19055T	2	110525	
	DIFF. SIDE GEAR - 41 Inv - 21,22, 23065T	2	110527	
58	SIDE PINION THRUST WASHER	4	027810*	
59	SIDE PINION	4	104139	
60	SPIDER	1	128003	
61a	NO SPIN ASSEMBLY - 39 INV	1	110829	19055TNS models only
61b	NO SPIN ASSEMBLY - 41 INV	1	110830	21065TNS models only
62	RTV SEALANT - 3OZ TUBE	1	107276S*	not illustrated

Axle Housing Parts and Hardware

Axle Housing Parts and Hardware



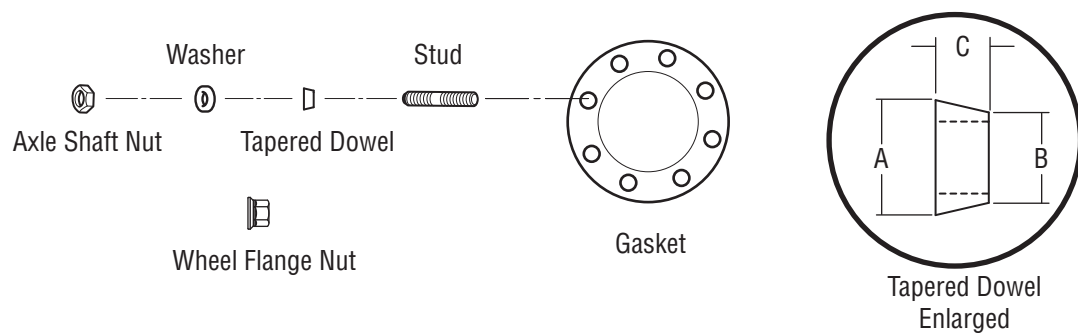
Item No.	Part Number	Qty. Per Axle	19055T/P	21065T/P 22065T/P 23065T/P	Notes
KIT - SPINDLE NUT		2	504157	504158	Incls items 1-4 (one side)
1	OUTER SPINDLE NUT	1	019186	119881	
2	LOCK WASHER - w/TAB	1	030714	129132	
3	LOCK WASHER - DOWEL TYPE	1	n/a	119883	
4	INNER SPINDLE NUT	1	019186	119882	
5	AXLE HOUSING ASSY.	1			See page 9
6	AXLE SHAFT	2			See page 9
KIT - U-TUBE BREATHER		1	507162	507162	Incls items 7A & 7B
7A	HOSE & CLAMP ASSY	1	129340	129340	
7B	VENT TUBE	1	302706	302706	
8	DRAIN PLUG - MAGNETIC	1	054254	054254	3/4"
9	PLUG - HSG COVER	1	129491	129491	1/2"
KIT - AXLE HSG HARDWARE		1	504064	504064	Incls items 10-11
10	CAPSCREW CARRIER TO HSG.	8	130836	130836	Short
10A	CAPSCREW CARRIER TO HSG.	4	130837	130837	Long
11	LOCKWASHER	12	130877	130877	
12	RTV SEALANT	1	107276S	107276S	not illustrated

Axle Shafts & Axle Housings

Axle Shafts

MODEL	PART NO.	QTY	SPLINE	BODY O.D	SHAFT LENGTH	SPLINE LENGTH	FLANGE O.D.	FLANGE HOLES
19055T	110882	2	39	1.81	40.906	4.00	6.125	12(.781) TPR
	119594	2	39	1.81	40.906	4.00	6.625	8(.635) STR
21065T	129330	2	41	1.87	41.500	4.00	8.500	8(.948) TPR
22065T	110888	2	41	1.87	41.313	4.00	8.500	8(.635) STR
23065T	126877	2	41	1.87	40.630	4.00	8.500	8(.948) TPR
	127668*nl	2	41	1.87	40.276	4.00	8.500	8(.948) TPR
	129332	2	41	1.87	40.630	4.00	8.500	8(.733) STR

NOTE: 127668 is now replaced by 126877



Axle Shaft Hardware

Part Number	Description	Dim. A	Dim. B	Dim. C	Notes
013885	Tapered Dowel	1.00"	.630"	.469"	For 5/8" studs - Split Dowel Design
132993	Tapered Dowel	1.00"	.630"	.469"	For 5/8" studs
013886	Gasket				8 hole
129545	Gasket				12 hole
029804	Washer				
060600	Nut-Axle Shaft				5/8", 18 thread
409923	Nut-Axle Shaft				9/16", 18 thread
127794	Stud - Wheel				5/8", 18 thread

Axle Housings

Axle Series	Tag ID Number	Service P/N	OEM	Features/Notes
19055T	322308	322308	Nav	Bare Housing
19055T	322310	322311	Nav	Torque Rod Bracket
19055T	321762	321762	Nav	Bare hsg, ABS Blocks
19055T	321762	321762	Nav	Bare hsg, ABS Blocks
21065T	321996	319031	Ftlnr	Bare Housing
21065T	323696	502079	Nav	Bare hsg, ABS Blocks
22065T	409187	409187	Blue Diamond / Nav	Torque Rod Bracket, ABS Blocks
22065T	409832	409832	Blue Diamond / Nav	Bare hsg, ABS Blocks
23065T	321736	321737	Blue Diamond / Nav	Bare hsg, ABS Blocks

Pinion Bearing Spacers

The pinion bearing spacers shown below come in a variety of different thickness's for use in re-assembly. All are available individually OR customers can order the PINION BRG SPACER SERVICE KIT, which has a selected range of popular bearing spacers.

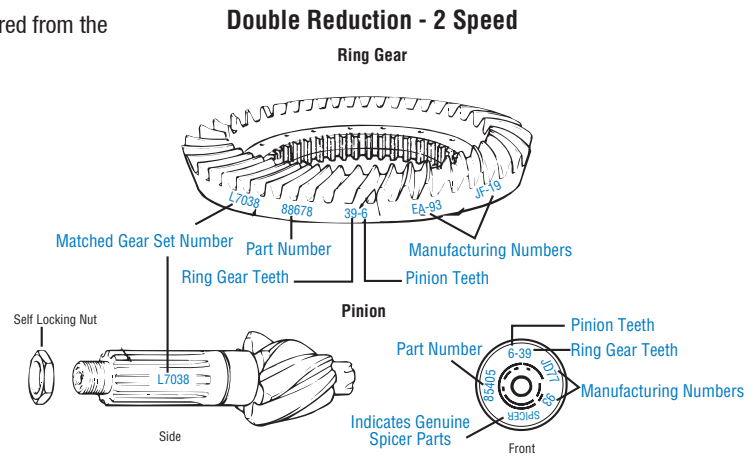
PINION BEARING SPACER KIT: 504016 (includes items w/*)

Models: 19055T/P, 21065T/P, 22065T/P, 23065T/P

Diameter (inches)	Part No.
.623	91552*
.627	91556*
.630	91559*
.631	91560
.632	91561
.633	91562
.634	91564
.635	91566
.636	91568
.637	91572*
.638	91576
.639	91580*
.640	91584
.641	91588
.642	91592
.643	91596*
.644	91600
.645	91602*
.646	91604
.653	91614*

Ring Gear & Pinion Identification

Ring Gear and Drive Pinion are matched parts and must be replaced in sets. Complete identification is stamped on both parts as shown in the adjacent drawing. Order the Dana kit by the ratio required from the chart below.



19055T/P, 21065T/P, 22065T/P, 23065T/P

39 Involute Spline 1.95" Diameter

17" Gearing

Pinion Nut Part-No. 127589

Ratio	SERVICE KIT	Ring Gear (NSS)	Pinion (NSS)	Teeth No.
3.70/5.05	504063	133997	133998	37/10
3.90/5.32	121956	107507	126080	39/10
4.11/5.61	121957	107508	126081	37/9
4.33/5.91	121810	107509	126082	39/9
4.63/6.31	122146	107510	126083	37/8
4.88/6.65	121811HX	107511	126084	39/8
5.29/7.21	121812	107512	126085	37/7
5.57/7.60	121813	107513	126086	39/7
6.17/8.41	121814HX	107514	126087	37/6
6.50/8.86	121815	107515	126088	39/6
7.17/9.77	121816	107516	126089	43/6

Service Carriers

19055T - TWO-SPEED CARRIER - STANDARD

39 Involute Spline

Side Gear # 110525

17" Gearing

Ratio	New Core Free Carrier P/N	Old Carrier P/N
3.90/5.32		n/a
4.11/5.61		n/a
4.33/5.91	19055T433591CF	681567
4.88/6.65		n/a
5.29/7.21	19055T529721CF	681568
6.17/8.41	19055T617841CF	681569
6.50/8.86	19055T650886CF	681570
7.17/9.77		n/a

21065T, 22065T, 23065T - TWO-SPEED CARRIER - STANDARD

41 Involute Spline

Side Gear # 110527

17" Gearing

Ratio	New Core Free Carrier P/N	Old Carrier P/N
3.70/5.05	21065T370505CF	681541
3.90/5.32	21065T390532CF	681542
4.11/5.61	21065T411561CF	681543
4.33/5.91	21065T433591CF	681544
4.63/6.31	21065T463631CF	681545
4.88/6.65	21065T488665CF	681546
5.29/7.21	21065T529721CF	681547
5.57/7.60	21065T557760CF	681548
6.17/8.41	21065T617841CF	681549
6.50/8.86	21065T650886CF	681550
7.17/9.77	21065T717977CF	681551

19055T PB - TWO-SPEED CARRIER WITH PARKING BRAKE OPTION

39 Involute Spline

Side Gear # 110525

17" Gearing

Ratio	New Core Free Carrier P/N	Old Carrier P/N
3.90/5.32	19055TR390532CF	681555
4.11/5.61	19055TR411561CF	681556
4.33/5.91		
4.88/6.65	19055TR488665CF	681557
5.29/7.21	19055TR529721CF	681558
6.17/8.41	19055TR617841CF	681559
6.50/8.86		
7.17/9.77	19055TR717977CF	681560

19055T NS - TWO SPEED CARRIER WITH NO SPIN OPTION

39 Involute Spline

No Spin # 110829

17" Gearing

Ratio	New Core Free Carrier P/N	Old Carrier P/N
3.90/5.32		
4.33/5.91		
5.57/7.60	19055TN557760CF	681554
6.17/8.41	19055TN617841CF	681553
7.17/9.77	19055TN717977CF	681552

19055T NS PB - TWO SPEED CARRIER WITH NO SPIN AND PARKING BRAKE OPTION

39 Involute Spline

No Spin # 110829

17" Gearing

Ratio	New Core Free Carrier P/N	Old Carrier P/N
3.90/5.32	19055TNR390532CF	681561
4.33/5.91	19055TNR433591CF	681566
5.57/7.60		
6.17/8.41		
7.17/9.77		

21065T NS, 22065T NS - TWO-SPEED CARRIER WITH NO SPIN OPTION

41 Involute Spline

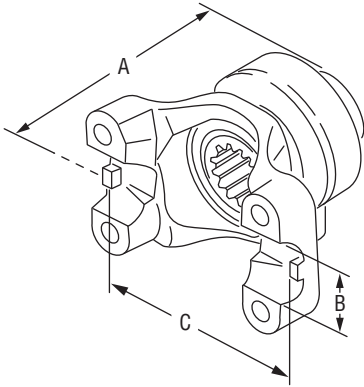
No Spin # 110830

17" Gearing

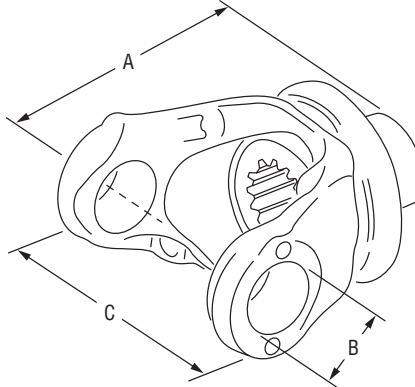
Ratio	New Core Free Carrier P/N	Old Carrier P/N
3.70/5.05		
3.90/5.32		
4.11/5.61		
4.33/5.91		
4.63/6.31		
4.88/6.65		
5.29/7.21		
5.57/7.60	21065TN557760CF	681648
6.17/8.41		
6.50/8.86	21065TN650886CF	121948
7.17/9.77		

Yokes & Flanges

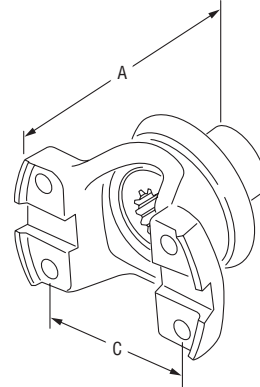
Style X
Half Round



Style Y
Full Round



Style Z
Half Round
Tapped Holes
Bearing Strap



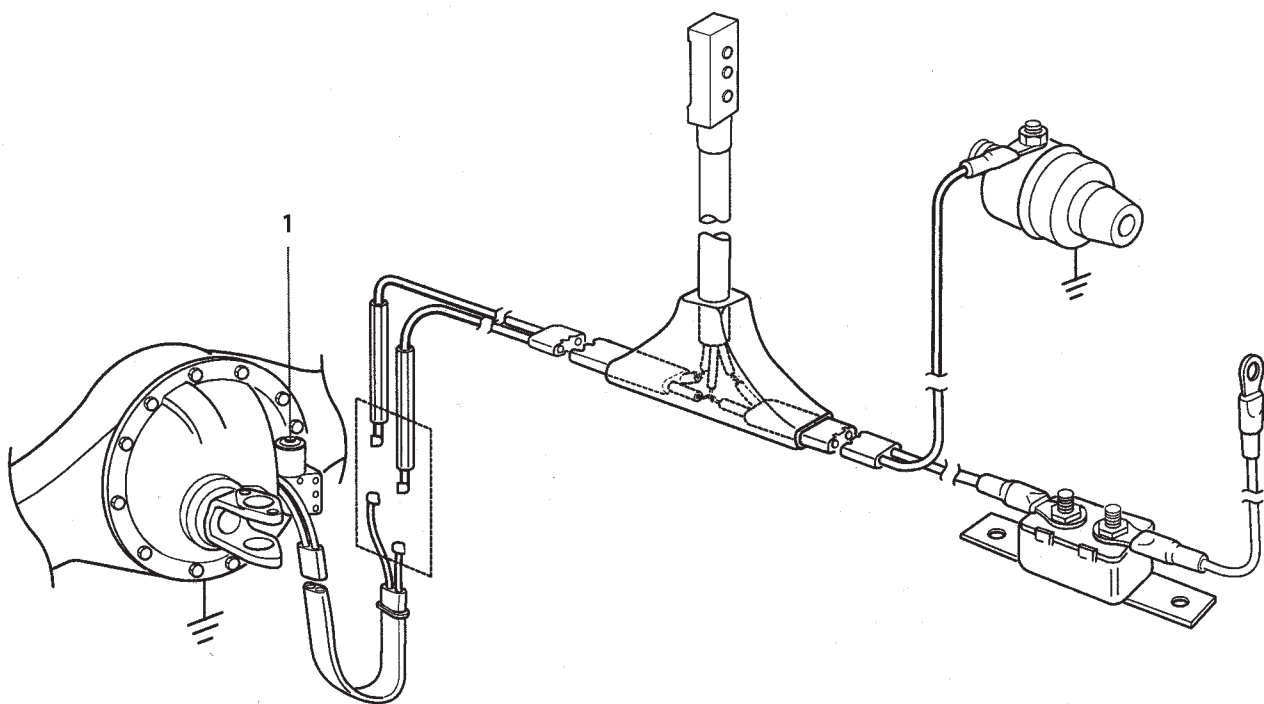
The following yoke reference information can be used for ordering replacement yoke assemblies for new service carriers. Shown below are original production part numbers and shown next to them are how those Yoke & Slinger Assy's are serviced thru the Dana's aftermarket. Always double check part supersession and options before ordering product.

19055T/P, 21065T/P, 22065T/P, 23065T/P

Rear Axle - 39 - 1.75 Involute Spline

Production Yoke & Slinger Slinger Assy	Service Part Number	Series	Style
129162	3-4-13061-1X	1480	X
126555	4-4-5691-1X	1550	X
126561	5-4-8131-1X	1610	X

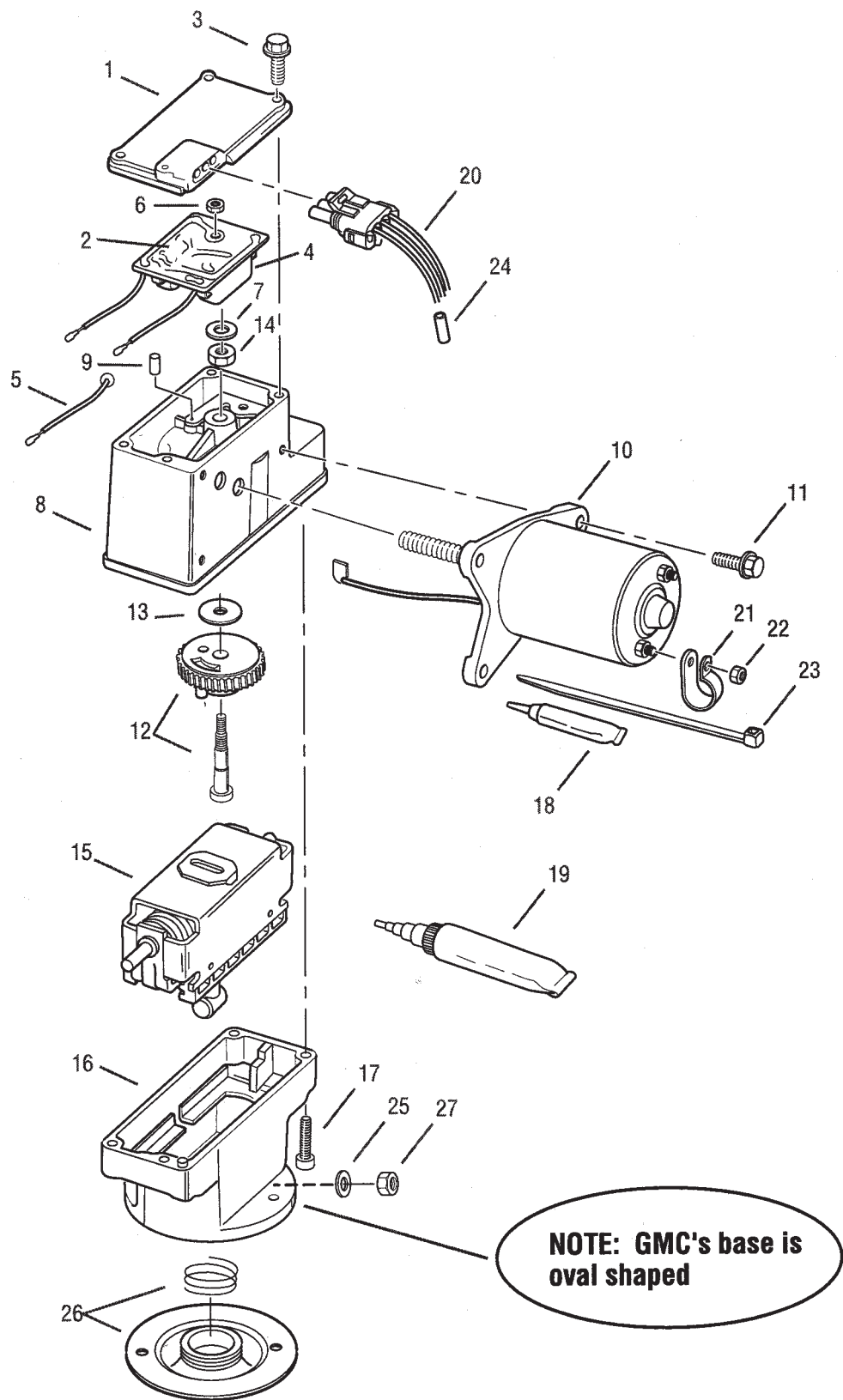
Electric Shift System



Item No.	Part Name	Qty. Per Axle	Part Number	Notes
1	Electric Shift Unit Assy	1	120750	12 Volt - Standard
			113752	12 Volt - GM Design
			127773	Waterous

Electric Shift Unit

Electric Shift Unit



Electric Shift Unit

Electric Shift Unit

Item No.	Part Name	Qty. Per Axle	Part Number	Notes
KIT - ELECTRIC SHIFT (Includes Items 1-19, 25-28)		1	127772	12-Volt - Standard
			127770	12-Volt - GM
			127773*	Special - Waterous
KIT - ELECTRIC SHIFT RETROFIT-COMPLETE (incls items 1-28)		1	113743	12-Volt Standard - w/Wiring Harness
KIT - ELECTRIC SHIFT RETROFIT (incls items 1-19, 25-28)		1	120750	12-Volt Standard - w/o Wiring Harness
1	Cover Assembly	1	113786	NSS (Use 211319)
2	Cover Gasket	1	113764	
3	Cover Hex Screw	3	113726	
		1	113788	Long
4	KIT - CIRCUIT BOARD & COVER	1	211319	Includes 1-3, 5-7, 18-19
5	Ground Wire	1	113775	NSS
6	Circuit Board Locknut	1	113772	NSS
7	Circuit Board Washer	1	113773	NSS
8	Motor Housing Assembly	1	113742	
9	Cam Pin	1	113721	
10	KIT - SHIFT MOTOR & LUBE	1	124650	Includes 18
			130115**	
11	Head Hex Screw	4	113725	
12	Drive Gear & Camp Pin Kit	1	113746	Includes 5, 9, 13-14, 18
13	Gear Washer	1	113774	NSS
14	Gear Locknut	1	113729	NSS
15	Slide Block & Lube Kit	1	113759	Includes 18
			113781***	
16	Base Housing	1	113750	12-Volt - GM
			113701	12-Volt - Standard
17	Hex Head Screw	4	113725	
18	Lubricant - Shift Unit 1/4oz	AR	113741	
19	Gasket Compound - shift unit	AR	113771	
KIT - WIRING HARNESS & CONNECTOR		1	113753	Includes 20-26
20	Connector & Harness Assembly	1	113738	NSS
21	Cable Clip	1	113747	NSS
22	Nut	1	113748	NSS
23	Tie Wrap	2	113749	NSS
24	Wire Connector	3	113739	NSS
25	Flat Washer	2	119857	
26	Seal & Spring Assembly	1	119855	
27	Stud Nut	2	63028	
28	Fit Up Card	1	128039	not illustrated

* Special shift unit for Waterous (Firetrucks) - Sold as is.

** Special motor for 127773 shift units - Sold in kit 124650 only.

*** Special slider block for 127773 shift units.

Service Kits - Quick Reference

Description	Part Number
Axle Housing Hardware Kit	504064
Basic Overhaul Kit	110635
Cage & Cup Assy - Standard Models	130875
Cage & Cup Assy - Parking Brake Models	130876
Diff Carrier Sub-Assy	107494
Diff Carrier & Bearing Cap Kit (incls 107494)	109365
No Spin Diff Assy - 39 Inv Spline	110829
No Spin Diff Assy - 41 Inv Spline	110830
Oil Seal & Shim Kit	114104
Pinion Oil Seal - Microlip design	127721
Pinion Oil Seal - triple lip design - service only	119427
Pinion Seal Driver Tool	126917
Pinion Bearing Spacer Kit	504016
Ring Gear Nut, Bolt & Washer Kit	087955
Side Gear - 39 INV	110525
Side Gear - 41 INV	110527
Sliding Clutch Parts Kit	060608
Spindle Nut Kit (19055T models)	504157
Spindle Nut Kit (21/22065T models)	504158
Wheel Diff Case Kit	101878
Wheel Diff Side Gear Kit - 39 Inv Spline	114469
Wheel Diff Side Gear Kit - 41 Inv Spline	114470
Wheel Diff Kit w/o Side Gears	118748
U-Tube Breather Kit	507162
RTV Sealant	107276S

Spicer Service Kit Bill of Materials

Service Kits

060608

Kit-Sliding Clutch

Dana P/N	Description	Qty
043270	THRUSTWASHER	1
056931	CLUTCH PLATE	1
056932	DIFF BRG ADJUSTER	1
113596	SLIDING CLUTCH GEAR	1

087955

Kit-NUT & BOLT (RING GEAR)

Dana P/N	Description	Qty
044358	NUT-RING GEAR	8
060599	BOLT-RING GEAR	8
129586	WASHER	8

101178

Kit-Wheel Diff Case

Dana P/N	Description	Qty
096283	CAPSCREW	8
096279	DIFF CASE-PLAIN HALF	1
098182	4-LEG PIN CASE ASSY	1

110635

Kit-Basic Overhaul

Dana P/N	Description	Qty
009797	EXPANSION PLUG	1
012495	BEARING CUP 55437	1
012496	BEARING CONE 55200	1
027810	THRUST WASHER	4
027816	BEARING CUP 56650	1
027817	BEARING CONE 56425	1
030703	EXPANSION PLUG	1
043270	THRUST WASHER	1
045460	BRG CONE 72200C	1
107567	SHIM .003	1
107568	SHIM .005	1
107569	SHIM .010	2
107570	SHIM .020	2
119855	SEAL SPRING ASSY	1
127386	THRUST WASHER	3
127721	OIL SEAL	1
129561	BEARING CUP	1
134300	BEARING CONE	1
134301	BEARING CUP	1
830398	PILOT BRG WUB61307UM	1
107276S	SEALANT RTV TUBE	1

114104

Kit-OilSeal & Shim

Dana P/N	Description	Qty
107567	SHIM .003"	2
107568	SHIM .005"	2
107569	SHIM .010"	2
107570	SHIM .020"	1
119855	SEAL SPRING ASSY	1
127721	PINION SEAL	1
107276S	SEALANT RTV TUBE	1

114469

Kit-Wheel Diff Side Gear (39 Inv)

Dana P/N	Description	Qty
027810	THRUST WASHER-SIDE PINION	4
104139	SIDE PINION	4
110525	SIDE GEAR-39 INV	2
127386	THRUST WASHER-SIDE GEAR	2
128003	DIFF SPIDER	1

114470

Kit-Wheel Diff Side Gear (41 Inv)

Dana P/N	Description	Qty
027810	THRUST WASHER-SIDE PINION	4
104139	SIDE PINION	4
110527	SIDE GEAR-41 INV	2
127386	THRUST WASHER-SIDE GEAR	2
128003	DIFF SPIDER	1

504016

Kit-Axle Housing Hardware

Dana P/N	Description	Qty
091552	PIN BRG SPACER .623"	1
091556	PIN BRG SPACER .627"	1
091559	PIN BRG SPACER .630"	1
091572	PIN BRG SPACER .637"	1
091580	PIN BRG SPACER .639"	1
091596	PIN BRG SPACER .643"	1
091602	PIN BRG SPACER .645"	1
091614	PIN BRG SPACER .653"	1

Service Kits (Continued)

504064

Kit-Axle Housing Hardware

Dana P/N	Description	Qty
130836	CAPSCREW-HEX	8
130837	CAPSCREW-HEX	4
130877	WASHER	12

504157

Kit-Spindle Nut (3 piece design)

Dana P/N	Description	Qty
019186	SPINDLE NUT	2
030714	LOCK NUT WASHER w/TAB	1

504158

Kit-Spindle Nut (4 piece design)

Dana P/N	Description	Qty
119881	SPINDLE NUT	1
119882	SPINDLE NUT	1
119883	LOCK NUT WASHER-DOWEL TYPE 1	
129132	LOCK NUT WASHER w/TAB	1

507162

Kit-U-Tube Breather

Dana P/N	Description	Qty
129340	HOSE & CLAMP ASSY	1
302706	BREATHER ASSY	1



SPICER®

Drivetrain Products

Axles

Driveshafts

Off-Highway Transmissions

LONG®

Thermal Products

Transmission Oil Coolers

Engine Oil Coolers

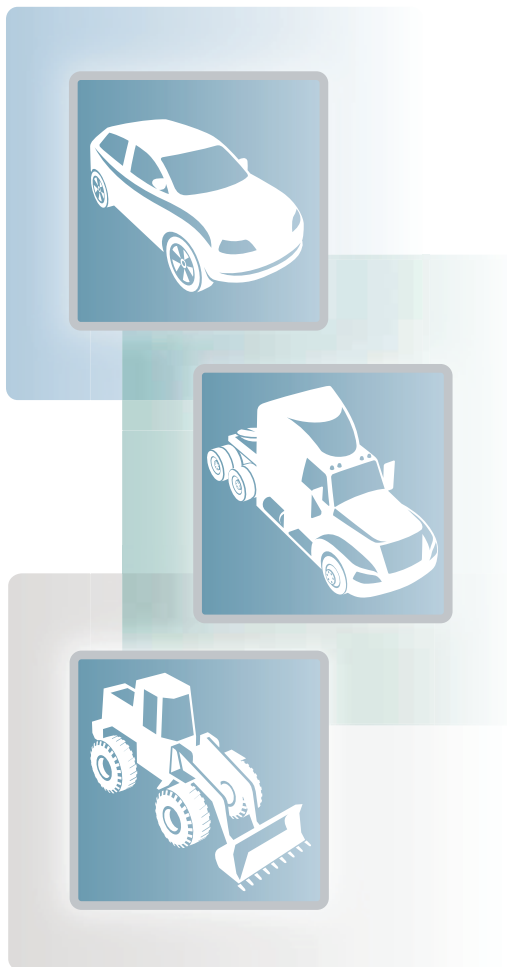
VICTOR REINZ®

Sealing Products

Gaskets and Seals

Cylinder-Head Cover Modules

Thermal-Acoustic Protective Shielding



Dana Aftermarket Group
PO Box 321
Toledo, Ohio 43697-0321

Warehouse Distributor: 1.800.621.8084
OE Dealers: 1.877.777.5360

www.spicerparts.com

SPICER®

