

Service Information: Spicer® SPL® 250/SPL® 350HT Lite Driveshaft Assemblies

Date: **May 15, 2018**

To: **All Dana Aftermarket Group Spicer® Driveshaft Customers**



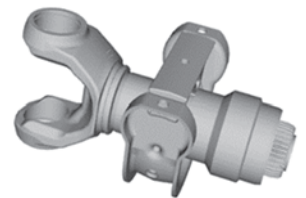
The following service information applies to the new Spicer SPL® 250 Lite HT or SPL® 350 Lite HT series.

If either the main driveshaft or coupling shaft requires replacement, it must be ordered as a complete set that includes both shafts in the system (driveshaft and coupling shaft as a set).

To lower vibration levels and improve NVH characteristics, the splines are manufactured as a matched pair so the yokeshaft and spline sleeve assembly must be replaced as a set. The slip components cannot be interchanged from shaft to shaft.

Spicer SPL 250 and SPL 350 Lite series drive and coupling shafts can be identified by their series numbers below:

	SPL 250 Lite		SPL 350 Lite	
Re-Lube	250CS50001		350CS50002	
	250CS50002	250DS85001	350CS50004	350DS85002
	250CS20001	250DS82001	350CS20002	350DS82002
	250CS20002		350CS20004	
Service-Free	250CS50001F		350CS50002F	
	250CS50002F	250DS85001F	350CS50004F	350DS85002F
	250CS20001F	250DS82001F	350CS20002F	350DS82002F
	250CS20002F		350CS20004F	



Please contact your Dana representative if you require any additional information.

Michelle Wright
Associate Product Manager
Spicer® Driveline Products

SpicerParts.com

Dana Aftermarket Group
PO Box 1000 Maumee, Ohio 43537
Warehouse Distributors: 1.800.621.8084
OE Dealers: 1.877.777.5360

Follow SpicerParts [f](#) [t](#) [@](#) [v](#) [in](#)