

# SPICER®



LAXIP-0003-102023  
October 2023

Illustrated Parts List

## Genuine Spicer® Light Axle Parts Ford® Super Duty®

M256 Front, M256 Non Drive, M275 Rear, M300 Rear



## Safety Information



### **WARNING**

**FAILURE TO FOLLOW THESE INSTRUCTIONS COULD AFFECT VEHICLE PERFORMANCE AND/OR SAFETY AND RESULT IN PERSONAL INJURY OR DEATH.**

**Do not convert or alter Spicer axles except in accordance with vehicle manufacturer's instructions.**

- Spicer axles are designed to meet OEM vehicle manufacturer's design and performance specifications.
- Improper conversion or alteration of these axles can damage the axles and/or other vehicle systems.
- Contact the OEM manufacturer for specific directions and guidelines.

**Do not change axle gear ratios on vehicles with anti-lock braking systems except in accordance with the vehicle manufacturer's instructions.**

- Vehicles with anti-lock braking systems may utilize sensors and tone rings within the axle housings to ensure the functioning of the anti-lock brakes.
- Improperly changing the axle ratios may defeat the anti-lock braking system.
- If changing axle ratios will require changing the location of the tone ring on the ring gear flange relative to the location of the sensor in the axle housing, contact the OEM manufacturer for specific directions and guidelines.

**Do not reuse or substitute ring gear bolts.**

- If you reuse a ring gear bolt or substitute an inferior quality bolt, the bolt may loosen or back out of its threaded hole, causing severe damage to the axle gears and other components and possibly resulting in a sudden "locking up" of the axle and loss of control of the vehicle.
- Always use new bolts specifically recommended for the application and install bolts using proper tools and torquing to the proper specifications.



### **CAUTION**

**DO NOT SUBSTITUTE PARTS NOT OF SPICER QUALITY.**

- Spicer axles are designed for each model vehicle, and manufactured and tested for safety and best performance. Replacement parts from other manufacturers may not be made to Spicer's rigid quality standards. To be sure you're getting Spicer quality, always use genuine Spicer parts.



**THIS SYMBOL WARNS OF POSSIBLE PERSONAL INJURY.**

How To Use This Catalog..... 6  
General Information..... 7  
Dana 256 Front Axle .....8-11  
Dana 275 Rear Axle ..... 12-15  
Dana 300 Rear Axle ..... 16-19  
Dana 256 Non Drive Front Axle ..... 20  
Part Number Index..... 21

## How To Use This Catalog

This catalog contains applications and part listings for front and rear axles that fit Ford Bronco vehicles from model years 2021 and newer.

### PARTS LISTING AND EXPLODED VIEW

- This section contains an exploded view of the axle and lists all the part numbers for those parts illustrated.
- The parts that do not have a common part number have a footnote reference indicating where to find the correct part number for each Bill of Material.

### DANA SAMPLE: PART LISTING

Item	Part #	Description	Notes
1	N/A	FDU Housing	Contact Vehicle Manufacturer
2	(1)	Differential Case Assembly and Gear Set	Welded Ring Gear Assembly
-	10267425	Differential Rebuild Kit (Standard Install)	Inc. 3, 7, 8, 10, 12, 13 (Does not include Pinion Oil Seal)
-	10267426	Differential Rebuild Kit (Master Overhaul)	Inc. 3, 7, 8, 9, 10, 11, 12, 13, 14 (Does not include Pinion Oil Seal)
-	70-31414-10	Reinzosil RTV Sealant	Included in Differential Rebuild Kits

### BILL OF MATERIAL TABLE

- This section contains vehicle applications listed in order by year.
- Included in the table are the major kits and assemblies for each Bill of Material number.

### DANA SAMPLE: BILL OF MATERIALS

BOM	Axle		Axle Kits				
	Diff Type	Ratio	Diff Case Assembly and Gear Set	Ring and Pinion Gearset	Diff Case Assembly	Standard Install Kit	Master Overhaul Kit
10149850	Open/Std	3.73	10127702	(4)	(4)	10267425	10267426
10149852	Open/Std	4.27	10130627	(4)	(4)	10267425	10267426
10103908	Open/Std	4.46	10130628	(4)	(4)	10267425	10267426

### VARIABLE PARTS TABLE

- This section contains the individual part numbers that vary by Bill of Material number for a given model.

### DANA SAMPLE: VARIABLE PARTS

Item	Description	Bill of Material			
		10149850	10103908	10149852	10141660
2	Differential Case Assembly and Gear Set	10127702	10130628	10130627	10130628
19, 24	Axle Tube Assembly	(3)	(3)	(3)	(3)
21, 26	Intermediate Shaft	(3)	(3)	(3)	(3)
22	Intermediate Shaft Retainer Clip (Qty: 2)	-	-	2011108	2011108
23	Intermediate Shaft Splined Collar	-	-	10098901	10098901

### Note:

Additional information on Spicer axles can be found in our General Information catalog number XGI.

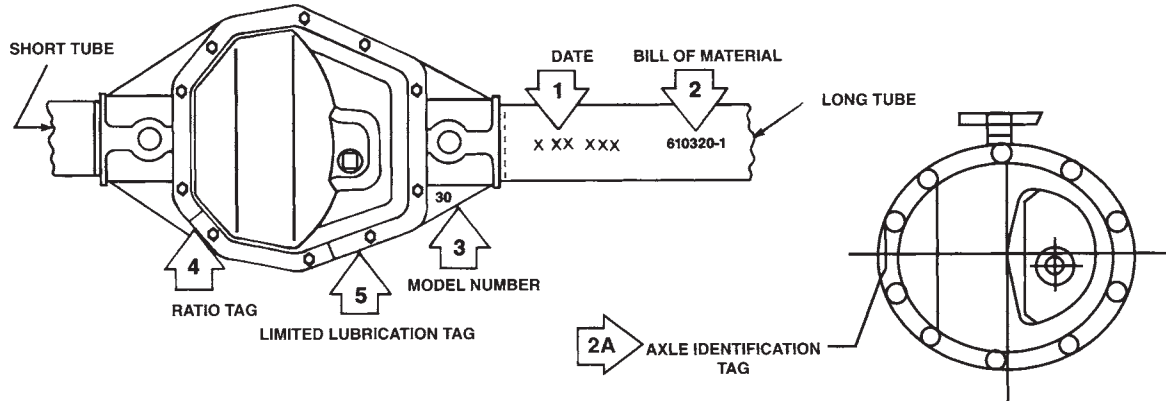
### THE XGI CATALOG CONTAINS THE FOLLOWING SECTIONS:

- Bill of Material Numerical Listing
- Ring and Pinion Kits
- Differential Case Assembly Kits
- Axle Shaft Dimension and Components

## General Information

### HOW TO IDENTIFY A SPICER AXLE

- All Spicer Carrier Type axles are identified with a manufacturing date (1) and Bill of Material number (2) stamped on the right or left hand tube on driving axles.
- The Bill of Material (BOM) number may also be found on the carrier in some models as shown in illustration (2A).
- For independent front suspension (IFS) axles, the BOM number may be located at one of three locations:
  - 1) A vertically-positioned tag near the center of the right hand side support arm
  - 2) Stamped into the left hand side support arm (opposite end of the camber adjuster)
  - 3) Stamped into the "nose end" of the axle carrier
 The location of the information will depend on the manufacturing date of the axle.
- The axle model number will be cast into one of the webs as shown (3), or it can be on the nose.
- Each axle contains a gear ratio tag (4), and if the axle is equipped with a limited slip differential, it will have a tag specifying the type of limited slip lubricant to be used (5).
- Refer to the appropriate model number section for parts identification and a breakdown of the Bill of Material.



### HOW TO CHANGE GEAR RATIOS

- To increase or decrease a gear ratio, there are certain steps that must be taken.
- The differential case depends upon the ratio desired.
- For each axle model, there is a high-ratio and a low-ratio case as illustrated on the below:

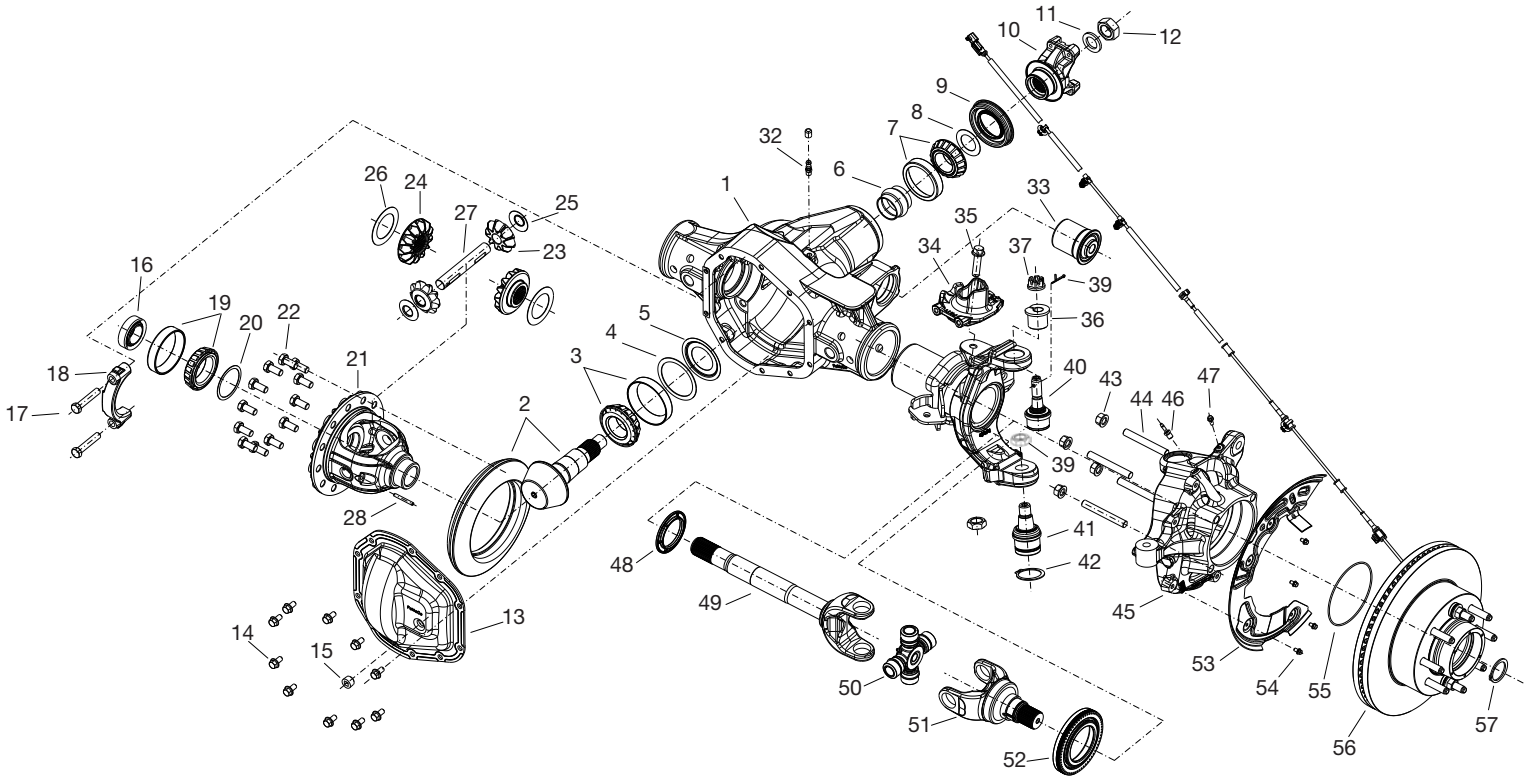
Axle Model	Low-Ratio Case	High-Ratio Case
Model 27	3.73 and Down	3.92 and Up
Model 28	3.45 and Down	3.73 and Up
Model 28 IFS AeroStar	2.27, 3.73	—
Model 30	3.55 and Down	3.73 and Up
Model 35	2.35 only	—
Model 35	2.73 - 3.31	3.54 and Up
Model 36 ICA	2.73 and Down	3.07 and Up
Model 44	3.73 and Down	3.92 and Up
Model 44 ICA (1984 and earlier)	3.73 and Down	3.92 and Up

Axle Model	Low-Ratio Case	High-Ratio Case
Model 44 ICA (1985 and later)	2.87 and Down	3.07 and Up
Model 50	4.10 and Down	—
Model 60	4.10 and Down	4.56 and Up
Model 61 Semi-Float	3.00 and 3.07 only	—
Model 61 Full-Float	3.31 and Down	3.54 and Up
Model 70	4.10 and Down	4.56 and Up
Model 70-3HD	3.42 and Down	3.73 and Up
Model 70-2UA	3.07 only	—
Model 80	3.73 and Down	4.10 and Up

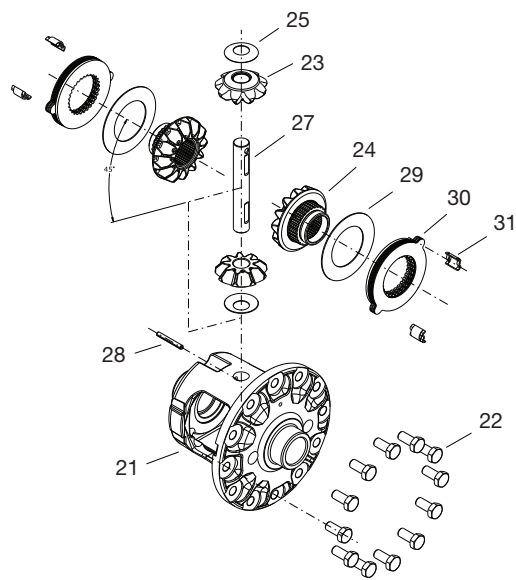
### EXAMPLE

- If you have a model 44 rear axle with a 3.54 ratio and wish to change to a 3.73 ratio, you change only the ring gear and pinion assembly.
- If you change the ratio to a 4.09, you must change to a high-ratio case in addition to changing the ring gear and pinion.
- The application section will show you what case to use.
- When the vehicle is equipped with both front and rear driving axles, the gear ratios must be the same in both axles.
- The drive gear screws are self-locking and must be replaced with new screws each time they are removed.

**DANA M256 FRONT AXLE**



**M256 TRAC-LOK™ ASSEMBLY**



## DANA M256 FRONT AXLE: PART LISTING

Item	Part #	Description	Notes
1	(3)	CARRIER (FINISHED)	
2	(1)	GEAR - HYPOID GEARSET	
3	10055782	KIT - BEARING/Differential Pinion Bearing (Head)	
4	10044399	SPACER - PINION BEARING	
5	2021009	BAFFLE - PINION OIL	
6	2023188	SPACER - COLLAPSIBLE	
7	10003987	KIT - BEARING/Differential Pinion Bearing (Tail)	
-	10044397	PKG - SEAL SLINGER AND BAFFLE	-includes items 5,8,9
8	2007794	WASHER - THRUST	
9	2021051	SEAL - OIL	
10	(3)	END YOKE ASSEMBLY	
11	2007409	WASHER - FLAT	
12	2007408	NUT - PINION	
	10458741	KIT - CARRIER COVER	includes items 13-15
13	2016946-1	COVER - CARRIER (FINISHED)	
14	10458740	PKG- SCREW - FLANGE HEAD (qty 10)	
15	43180	PLUG - PIPE	
	70-31414-10	Reinzosil RTV Sealant	
16	10019566	SEAL - OIL	
17	48632-2	BOLT - HEX	
18	53152	BEARING CAP (SEMI-FIN)	
19	10124440	KIT - BEARING - Differential Bearing (qty 1)	
20	701007X	PKG - DIFF ADJ SHIM	
21	(1)	DIFF CASE (std or t/l) (FINISHED)	
	(1)	INNER GEAR KIT (std)	includes items 22-28
22	703030	PKG - DRIVE GEAR SCREW (qty 12)	
23	10014127	GEAR - DIFF - PINION MATE (std or t/l)	
24	10014126	GEAR - DIFF - SIDE GEAR (std)	
	10120543	GEAR - DIFF - SIDE GEAR (t/l)	
25	54630	THRUSTWASHER - DIFF PINION MATE (std)	
	34730	THRUSTWASHER - DIFF PINION MATE (t/l)	
26	34729	THRUSTWASHER - DIFF GEAR (std)	
27	30263	DIFFERENTIAL SHAFT (std or t/l)	
28	44810	PIN - ROLL (std or t/l)	
	(1)	INNER GEAR KIT	includes items 22-25,27-31

Item	Part #	Description	Notes
	(2)	KIT - DIFF PLATE & DISC	includes items 29-31
29	(2)	WASHER - BELLEVILLE	
30	(2)	DISC PACK ASSEMBLY	
31	(2)	RETAINER - DIFF CLUTCH	
32	46082	VENT	
33	(3)	BUSHING	
34	(3)	SPRING SEAT	
35	(3)	SCREW - FLANGE HEAD	
36	(2)	BUSHING - LH	
	(2)	BUSHING - LH	
	(2)	KIT - SOCKET ASSY	includes items 37-42
37	44101	NUT - SLOTTED	
38	500024-8	PIN - COTTER	
39	44133	NUT - LOCK	
40	(2)	SOCKET ASSY- UPPER	
41	(2)	SOCKET ASSY -LOWER	
42	(2)	SNAP RING	
43	54829	NUT - HEX	
44	(2)	STUD	
45	(3)	KNUCKLE - STEERING LH (FINISHED)	
	(3)	KNUCKLE - STEERING RH (FINISHED)	
46	45587	VENT	
47	(2)	SCREW - FLANGE HEAD	
-	(1)	SHAFT AND JOINT ASSY - LH	includes items 48-52
		SHAFT AND JOINT ASSY - RH	
48	(3)	DEFLECTOR	2020143
49	(3)	INNER AXLE SHAFT - LH	
		INNER AXLE SHAFT - RH	
50	SPL70-4X	UNIVERSAL JOINT	
51	(3)	OUTER AXLE SHAFT	
52	(3)	SEAL - AIR	
53	(3)	SHIELD - PROTECTION - LH	
		SHIELD - PROTECTION - RH	
54	10016216	SCREW - FLANGE HEAD	
55	54983	O-RING	
56	(3)	HUB AND ROTOR ASSEMBLY	
57	2002360	SNAP RING	

(1) See "Bill of Material Table," (2) See "Variable Parts Table,"  
 (3) Contact Vehicle Manufacturer, (4) Not Sold Separately

## DANA M256 FRONT AXLE: BILL OF MATERIALS

Axle			Axle Kits					
BOM	Diff Type	Ratio	Ring and Pinion	Diff Case Assy	Diff Case (Unloaded)	Inner Parts Kit	Shaft/Joint Assy (RH)	Shaft/Joint Assy (LH)
<b>2020688</b>								
2020688-1	Open/Std	3.73	2020682	10010271	30357	10458743	10013778	10013781
2020688-2	Open/Std	4.30	2020689	10010271	30357	10458743	10013778	10013781
2020688-4	Open/Std	3.55	2020715	10010271	30357	10458743	10013778	10013781
2020688-5	Open/Std	3.31	2020704	10010271	30357	10458743	10013778	10013781
<b>10075440</b>								
10075435	Open/Std	3.73	2020682	10010271	30357	10458743	10013778	10013781
10075436	Open/Std	4.30	2020689	10010271	30357	10458743	10013778	10013781
10075437	Open/Std	3.55	2020715	10010271	30357	10458743	10013778	10013781
10075438	Open/Std	3.31	2020704	10010271	30357	10458743	10013778	10013781
<b>10085481</b>								
10093185	Open/Std	3.31	2020704	10010271	30357	10458743	10013778	10013781
10093186	Open/Std	3.55	2020715	10010271	30357	10458743	10013778	10013781
10093187	Open/Std	4.30	2020689	10010271	30357	10458743	10013778	10013781
<b>10114704</b>								
10114706	Trac-Lok	3.55	2020715	10114708	49543	10458746	10013778	10013781
10114705	Trac-Lok	4.30	2020689	10114708	49543	10458746	10013778	10013781
<b>2020783</b>								
2020783-1	Open/Std	3.73	2020682	10010271	30357	10458743	10013778	10013781
2020783-2	Open/Std	4.10	2020784	10010271	30357	10458743	10013778	10013781
2020783-3	Open/Std	4.30	2020689	10010271	30357	10458743	10013778	10013781
2020783-4	Open/Std	3.55	2020715	10010271	30357	10458743	10013778	10013781
<b>10075442</b>								
10075443	Open/Std	3.73	2020682	10010271	30357	10458743	10013778	10013781
10075444	Open/Std	4.10	2020784	10010271	30357	10458743	10013778	10013781
10075445	Open/Std	4.30	2020689	10010271	30357	10458743	10013778	10013781
10075446	Open/Std	3.55	2020715	10010271	30357	10458743	10013778	10013781
<b>10093418</b>								
10091504	Open/Std	3.73	2020682	10010271	30357	10458743	10013778	10013781
10093415	Open/Std	4.10	2020784	10010271	30357	10458743	10013778	10013781
10093416	Open/Std	4.30	2020689	10010271	30357	10458743	10013778	10013781
10093417	Open/Std	3.55	2020715	10010271	30357	10458743	10013778	10013781
<b>2020897</b>								
2020897-1	Open/Std	4.30	2020689	10010271	30357	10458743	2022236-1	2022236-2
2020897-2	Open/Std	4.88	2020707	10010277	30258	10458743	2022236-1	2022236-2
2020897-3	Open/Std	4.10	2020784	10010271	30357	10458743	2022236-1	2022236-2
<b>10048996</b>								
10049034	Open/Std	4.10	2020784	10010271	30357	10458743	2022236-1	2022236-2
<b>2023484</b>								
2023484-1	Open/Std	4.88	2020707	10010277	30258	10458743	2022236-1	2022236-2
2023484-2	Open/Std	4.30	2020689	10010271	30357	10458743	2022236-1	2022236-2
<b>10049035</b>								
10049040	Open/Std	4.88	2020707	10010277	30258	10458743	2022236-1	2022236-2
10049041	Open/Std	4.30	2020689	10010271	30357	10458743	2022236-1	2022236-2
<b>10123196</b>								
10123196	Open/Std	4.88	2020707	10010277	30258	10458743	2022236-1	2022236-2

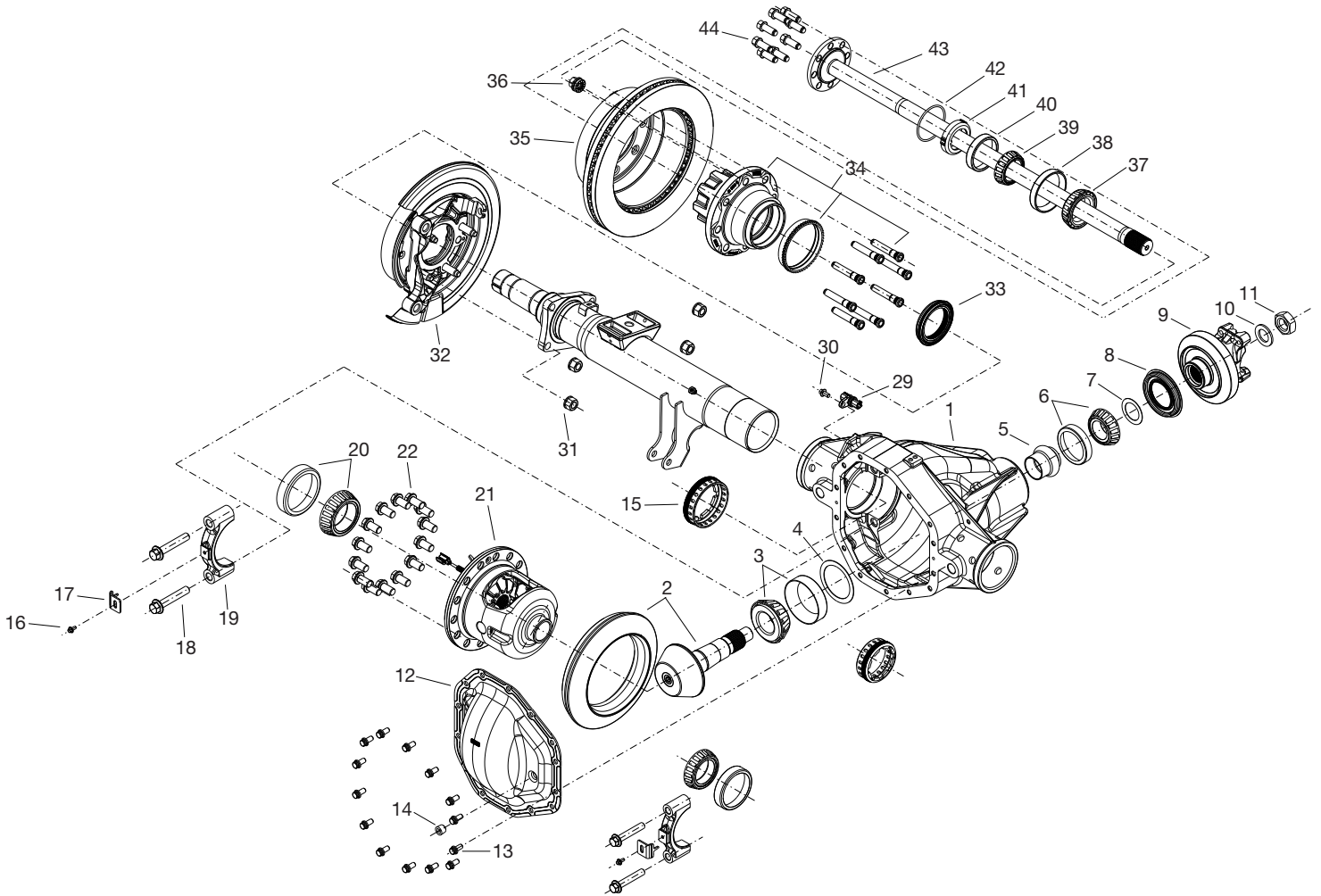
(1) Contact Vehicle Manufacturer



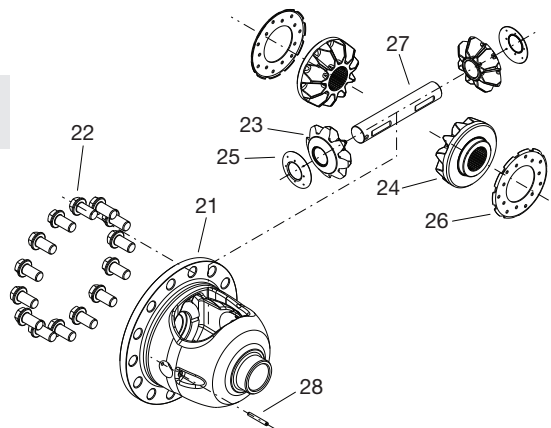
**DANA M256 FRONT AXLE: VARIABLE PARTS**

Item	Description	Bill of Material											
		2020688	10075440	10085481	10114704	2020783	10075442	10093418	2020897	10048996	2023484	10049035	10123196
-	Reinzosil RTV Sealant				70-31414-10								
-	KIT – DIFF PLATE & DISC				10458748								
29	WASHER - BELLEVILLE				10116594								
30	DISC PACK ASSEMBLY				10117206								
31	RETAINER - DIFF CLUTCH				40835								
36	BUSHING(KNUCKLE) LH	2008788	2008786	2008788	2008789	2008788	2008786	2008788	2002080	2002080	2002080	2002080	2002080
	BUSHING(KNUCKLE) RH	2008788	2008789	2008785	2008786	2008788	2008789	2008785	2002787	2002787	2002787	2002787	2002787
-	Kit Upper and Lower Ball Joint	708238	708238	708238	708238	708238	708238	708238	10458745	10458745	10458745	10458745	10458745
40	Ball Joint – Upper	2012503	2012503	2012503	2012503	2012503	2012503	2012503	2023350	2023350	2023350	2023350	2023350
41	Ball Joint – Lower	2012504	2012504	2012504	2012504	2012504	2012504	2012504	2023351	2023351	2023351	2023351	2023351
42	SNAP RING	620343	620343	620343	620343	620343	620343	620343	54091	54091	54091	54091	54091
44	STUD	53644-1	53644-1	53644-1	53644-1	53644-1	53644-1	53644-1	53644-2	53644-2	53644-2	53644-2	53644-2
47	SCREW - FLANGE HEAD	10103188	10103188	10050548	10103188	10103188	10103188	10103188	10103188	10016222	10103188	10016222	10103188

**DANA M275 REAR AXLE**



**M275 TRAC-LOK™ ASSEMBLY**



## DANA M275 REAR AXLE: PART LISTING

Item	Part #	Description	Notes
1	(3)	CARRIER (FINISHED)	
2	(1)	GEAR - HYPOID GEARSET	
3	10055872	KIT - BEARING/Differential Pinion Bearing (Head)	
4	10003991	SPACER - BEARING PRELOAD	
5	2007152	SPACER - COLLAPSIBLE	
6	10003987	KIT - BEARING/Differential Pinion Bearing (Tail)	
7	2007199	WASHER - THRUST	
8	2011840	SEAL - OIL	
9	(3)	END YOKE ASSEMBLY	
10	2007202	WASHER - FLAT	
11	2008913	NUT - PINION	
		KIT	includes items 12-14
12	10117831	COVER - CARRIER (FINISHED)	
13	10172353	PKG - SCREW(QTY 14)	
14	2001762	PLUG - PIPE (MAGNETIC)	
	70-31414-10	Reinzosil RTV Sealant	
15	(3)	DIFF BEARING ADJUSTER (FINISHED) - LH	
	10014131	DIFF BEARING ADJUSTER (FINISHED) - RH	
16	52784-2	SCREW - FLANGE HEAD	
17	2022308	CLIP - ADJUSTING RING - LH	
	2022865	CLIP - ADJUSTING RING - RH	
18	2007551-1	SCREW - FLANGE HEAD - LH	
	2007507-1	SCREW - FLANGE HEAD - RH	
19	2022306	BEARING CAP (SEMI-FIN) - LH	
	2022105	BEARING CAP (SEMI-FIN) - RH	
20	10055873	KIT - BEARING - Differential Bearing	
21	(1)	Diff Case Assy (FINISHED)	
	(1)	INNER GEAR KIT (std)	includes items 22-28
22	10043127	PKG - DRIVE GEAR SCREW (Qty 14) (std or eld)	
23	54919	GEAR - DIFF - PINION MATE	

Item	Part #	Description	Notes
24	2015925	GEAR - DIFF - SIDE GEAR	
25	53273	THRUSTWASHER - DIFF PINION MATE	
26	53256	DISC	
27	54975	DIFFERENTIAL SHAFT	
28	53287	PIN - ROLL	
	(2)	KIT- CONTAINS ITEMS 29-30	includes items 29-30
29	(2)	CONNECTOR - ELECTRICAL (eld)	
30	(2)	SCREW - FLANGE HEAD (eld)	
31	2001857	NUT - LOCK	
32	(3)	BRAKE DRUM ASSY - LH	
		BRAKE DRUM ASSY - RH	
33	(3)	SEAL - OIL	
34	(3)	HUB ASSY	
35	(3)	BRAKE ROTOR (FINISHED)	
36	(3)	NUT - WHEEL	
		KIT - BEARING	includes items 37-40
37	10014315	BEARING - TAPERED ROLLER CONE	
38	10014319	BEARING - TAPERED ROLLER CONE	
39	10014317	BEARING - TAPERED ROLLER CUP	
40	10014318	BEARING - TAPERED ROLLER CUP	
41	43075	RETAINER ASSY - WHEEL BRG	
42	47893	O-RING	
43	(1)	SHAFT - FLANGED AXLE (FINISHED) (FULL FLOAT) - LH	
	(1)	SHAFT - FLANGED AXLE (FINISHED) (FULL FLOAT) - RH	
44	10012125	SCREW - FLANGE HEAD	

(1) See "Bill of Material Table," (2) See "Variable Parts Table,"  
(3) Contact Vehicle Manufacturer

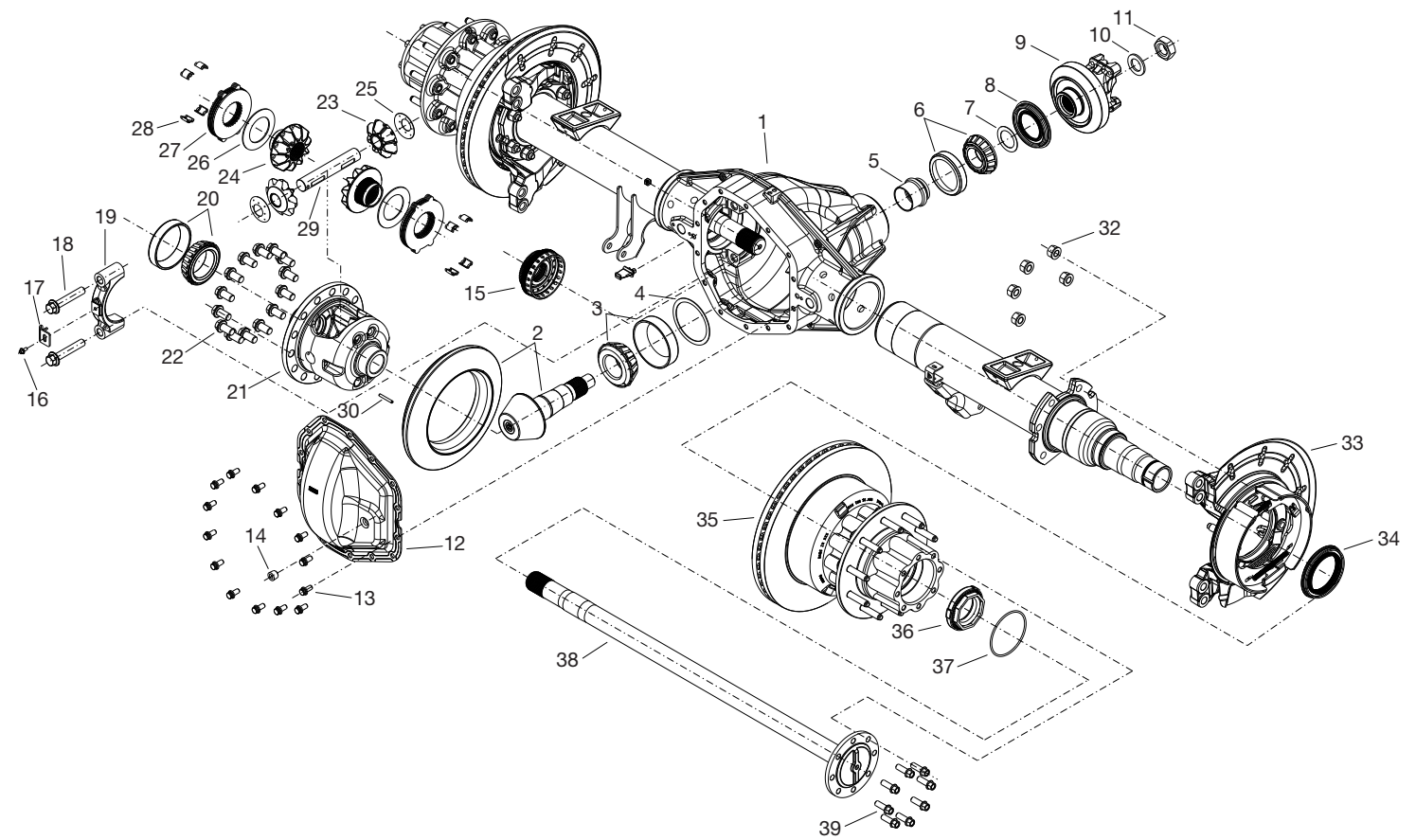
**DANA M275 REAR AXLE: BILL OF MATERIALS**

Axle			Axle Shaft Assembly					
BOM	Diff Type	Ratio	Ring and Pinion	Diff Case Assy	Diff Case (Unloaded)	Inner Parts Kit	Shaft/Joint Assy (RH)	Shaft/Joint Assy (LH)
<b>2019037</b>								
2019037-1	Open/Std	3.31	2019615	2022557	2007154	KIT1	10043570	10043571
2019037-2	ELD (2 Piece)	3.31	2019615	2021787	(1)	(1)	10043568	10043569
2019037-3	Open/Std	3.55	2010761	2022557	2007154	KIT1	10043570	10043571
2019037-4	ELD (2 Piece)	3.55	2010761	2021787	(1)	(1)	10043568	10043569
<b>2019038</b>								
2019038-1	Open/Std	3.73	2018521	2022557	2007154	KIT1	10043573	10043569
2019038-2	ELD (2 Piece)	3.73	2018521	2021787	(1)	(1)	10043570	10043572
<b>10037784</b>								
10037785	Open/Std	3.73	2018521	2022557	2007154	KIT1	10043573	10043569
10037786	ELD (2 Piece)	3.73	2018521	2021787	(1)	(1)	10043570	10043572
10037787	ELD (2 Piece)	4.30	10050776	2021787	(1)	(1)	10043570	10043572
<b>10037788</b>								
10037789	Open/Std	3.31	2019615	2022557	2007154	KIT1	10043570	10043571
10037790	ELD (2 Piece)	3.31	2019615	2021787	(1)	(1)	10043568	10043569
10037791	Open/Std	3.55	2010761	2022557	2007154	KIT1	10043570	10043571
10037792	ELD (2 Piece)	3.55	2010761	2021787	(1)	(1)	10043568	10043569
10037793	ELD (2 Piece)	4.30	10050776	2021787	(1)	(1)	10043568	10043569

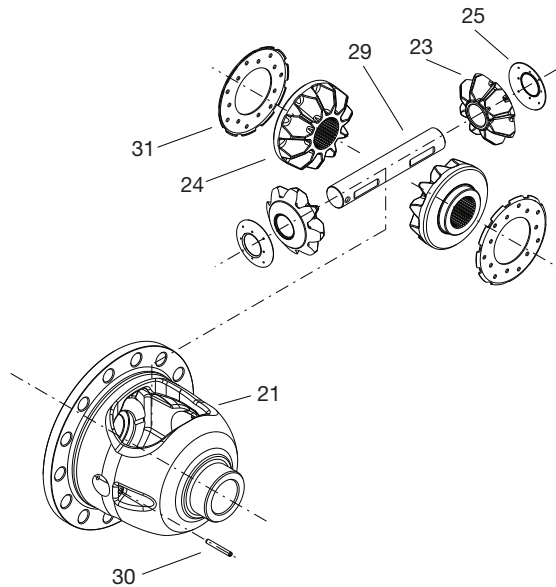
(1) Serviced with complete differential case assembly kit only



**DANA M300 REAR AXLE**



**M300 TRAC-LOK™ ASSEMBLY**



### DANA M300 REAR AXLE: PART LISTING

Item	Part #	Description	Notes
1	(3)	CARRIER (FINISHED)	
2	(1)	Ring and Pinion	
3	10004000	KIT - BEARING/Differential Pinion Bearing (Head)	
4	10004908	SPACER - PINION BEARING	
5	2023204	SPACER - COLLAPSIBLE	
6	10055878	KIT - BEARING/Differential Pinion Bearing (Tail)	
7	2007199	WASHER - THRUST	
8	2011840	SEAL - OIL	
9	(3)	END YOKE ASSEMBLY	
10	2007202	WASHER - FLAT	
11	2008913	NUT - PINION	
12	10117837	COVER - CARRIER (FINISHED)	includes items 12-14
13	(2)	SCREW - FLANGE HEAD (14)	
14	2001762	PLUG - PIPE (MAGNETIC)	
15	(3)	DIFF BEARING ADJUSTER ASSEMBLY	
		KIT - contains item 16 and 17	
16	52784-2	SCREW - FLANGE HEAD	
17	2022308	CLIP - ADJUSTING RING	
18	2007551-1	SCREW - FLANGE HEAD	includes items 16-17
19	2022306	BEARING CAP (SEMI-FIN)	
20	10055880	KIT - BEARING - Differential Bearing	
21	(1)	Diff Case Assembly	
	(1)	INNER GEAR KIT	
22	10043127	PKG - DRIVE GEAR SCREW(Qty 14)	
23	54919	GEAR - DIFF - PINION MATE (std or t/l)	
24	(2)	GEAR - DIFF - SIDE GEAR (t/l)	
	(2)	GEAR - DIFF - SIDE GEAR (std)	
25	2013931	THRUSTWASHER - DIFF PINION MATE (t/l)	
	53273	THRUSTWASHER - DIFF PINION MATE (std)	includes items 22-28

Item	Part #	Description	Notes
	(2)	KIT - DIFF PLATE & DISC (t/l only)	
26	(2)	DISC (t/l)	
27	(2)	DISC PACK ASSEMBLY	
28	(2)	RETAINER - DIFF CLUTCH	
29	2018002	DIFFERENTIAL SHAFT (t/l or std)	
30	53287	PIN - ROLL (t/l or std)	
	(1)	DIFF KIT (std)	
31	53256	DISC (std)	includes items 29-30
32	2001857	NUT - LOCK	
33	(3)	BRAKE ASSY SHOE TYPE - LH	
	(3)	BRAKE ASSY SHOE TYPE - RH	
34	(3)	SEAL - OIL	
35	(3)	HUB AND ROTOR ASSEMBLY	
36	(2)	RETAINER ASSY - WHEEL BRG	
37	(2)	O-RING	
38	(1)	SHAFT - FLANGED AXLE (FINISHED) (FULL FLOAT) - LH	
	(1)	SHAFT - FLANGED AXLE (FINISHED) (FULL FLOAT) - RH	
39	(2)	SCREW - FLANGE HEAD (16)	includes items 37-40
37	10014315	BEARING - TAPERED ROLLER CONE	
38	10014319	BEARING - TAPERED ROLLER CONE	
39	10014317	BEARING - TAPERED ROLLER CUP	
40	10014318	BEARING - TAPERED ROLLER CUP	
41	43075	RETAINER ASSY - WHEEL BRG	
42	47893	O-RING	
43	(1)	SHAFT - FLANGED AXLE (FINISHED) (FULL FLOAT) - LH	
	(1)	SHAFT - FLANGED AXLE (FINISHED) (FULL FLOAT) - RH	
44	10012125	SCREW - FLANGE HEAD	

(1) See "Bill of Material Table," (2) See "Variable Parts Table,"  
 (3) Contact Vehicle Manufacturer

## DANA M300 REAR AXLE: BILL OF MATERIALS

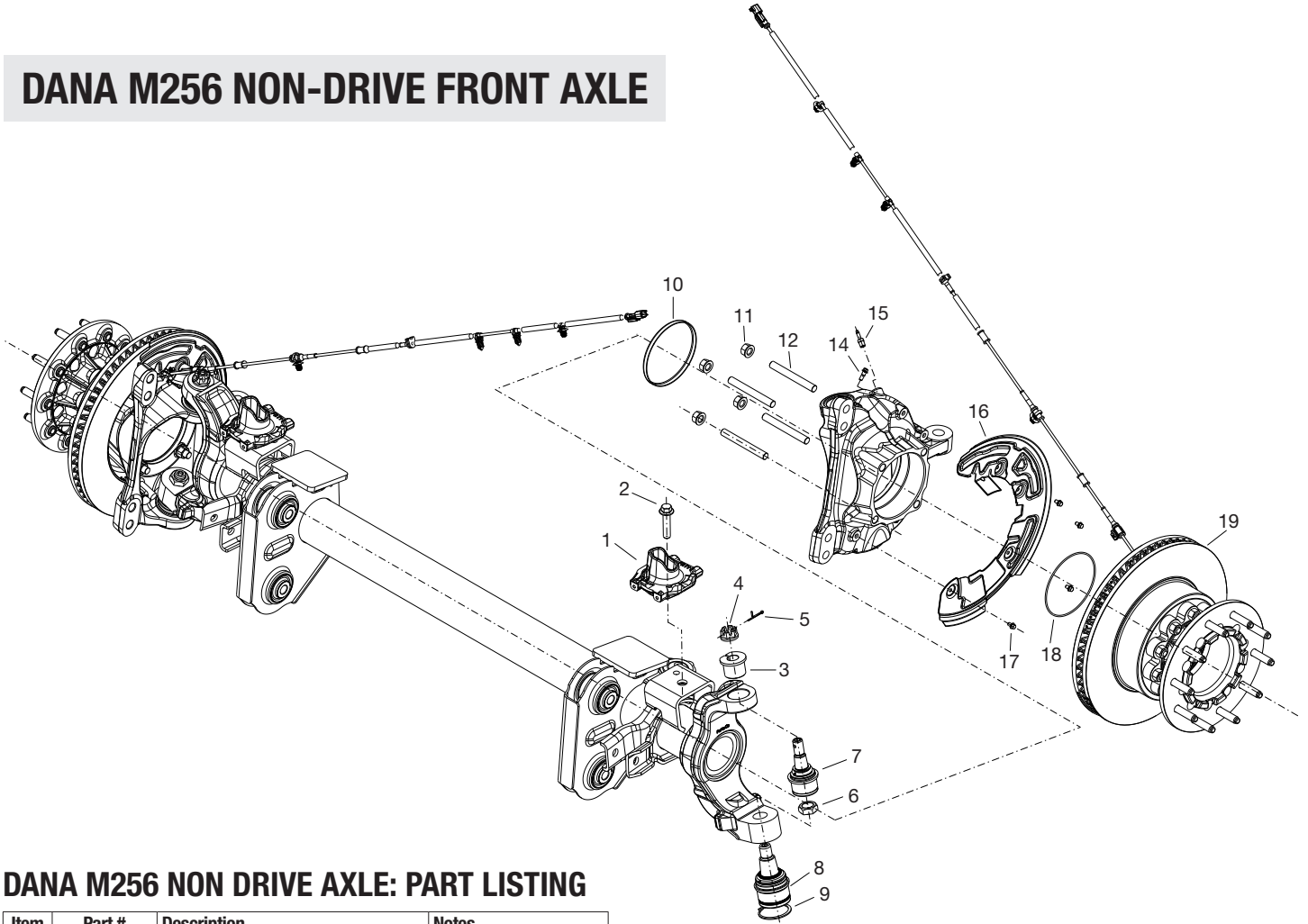
Axle			Axle Shaft Assembly					
BOM	Diff Type	Ratio	Ring and Pinion	Diff Case Assy	Diff Case (Unloaded)	Inner Parts Kit	Shaft/Joint Assy (RH)	Shaft/Joint Assy (LH)
<b>2022982</b>								
2022982-4	Open/Std	4.30	10031771	2018008	2018005	KIT3(std)	10043613	10043614
<b>10037763</b>								
10037764	Open/Std	3.73	10018688	2018007	2018003	KIT3(std)	10043613	10043614
10037767	LSD	4.10	2010902	2017995	2017992	KIT1(t/l)	10043613	10043614
10037768	LSD	4.30	10031771	2017995	2017992	KIT1(t/l)	10043613	10043614
10037769	Open/Std	4.30	10031771	2018008	2018005	KIT3(std)	10043613	10043614
<b>2022984</b>								
2022984-1	Open/Std	4.10	2010902	2008356	2018005	KIT4(std)	10043657	10043656
2022984-2	LSD	4.10	2010902	2008049	2017992	KIT2(t/l)	10043657	10043656
2022984-3	Open/Std	4.30	10031771	2008356	2018005	KIT4(std)	10043657	10043656
2022984-4	LSD	4.30	10031771	2008049	2017992	KIT2(t/l)	10043657	10043656
2022984-5	Open/Std	4.88	10034909	2008356	2018005	KIT4(std)	10043657	10043656
2022984-6	LSD	4.88	10034909	2008049	2017992	KIT2(t/l)	10043657	10043656
<b>2022985</b>								
2022985-1	LSD	4.88	10034909	2008049	2017992	KIT2(t/l)	10043657	10043656
<b>10037761</b>								
10037762	LSD	4.10	2010902	2017995	2017992	KIT1(t/l)	10043614	10043612
<b>10126372</b>								
10126373	LSD	4.88	10034909	2008049	2017992	KIT2(t/l)	10043657	10043656
<b>10037771</b>								
10037772	Open/Std	3.55	2010407	2018007	2018003	KIT3(std)	10043615	10043616
10037773	LSD	3.55	2010407	2017994	2017990	KIT1(t/l)	10043615	10043616
10037774	LSD	4.10	2010902	2017995	2017992	KIT1(t/l)	10043615	10043616
10037776	Open/Std	3.73	10018688	2018007	2018003	KIT3(std)	10043615	10043616
10037777	LSD	3.73	10018688	2017994	2017990	KIT1(t/l)	10043615	10043616
10037780	LSD	4.30	10031771	2017995	2017992	KIT1(t/l)	10043615	10043616
<b>10061254</b>								
10037794	LSD	4.30	10031771	2008049	2017992	KIT2(t/l)	10043657	10043656
<b>10093760</b>								
10093761	LSD	4.30	10031771	2008049	2017992	KIT2(t/l)	10043657	10043656



**DANA M300 REAR AXLE: VARIABLE PARTS**

BOM	SCREW - FLANGE HEAD (14)	GEAR - DIFF - SIDE GEAR (t/l)	GEAR - DIFF - SIDE GEAR (std)	KIT (t/l)	DISC (t/l)	DISC PACK ASSEMBLY	RETAIN-ER - DIFF CLUTCH	RETAINER ASSY - WHEEL BRG	O-RING	SCREW - FLANGE HEAD (16)
ITEM	13	24	24					37	36	39
2022982-4	2018243-1		54920					43075	47893	10012125
10037764	2018243-1		54920					43075	47893	10012125
10037767	2018243-1	2008054		KIT (t/l)	2008549	2008056	40835	43075	47893	10012125
10037768	2018243-1	2008054		KIT (t/l)	2008549	2008056	40835	43075	47893	10012125
10037769	2018243-1		54920					43075	47893	10012125
2022984-1	2018243-1		2008157					47858	47857	45816
2022984-2	2018243-1	2008055		KIT (t/l)	2008549	2008056	40835	47858	47857	45816
2022984-3	2018243-1		2008157					47858	47857	45816
2022984-4	2018243-1	2008055		KIT (t/l)	2008549	2008056	40835	47858	47857	45816
2022984-5	2018243-1		2008157					47858	47857	45816
2022984-6	2018243-1	2008055		KIT (t/l)	2008549	2008056	40835	47858	47857	45816
2022985-1	2018243-1	2008055		KIT (t/l)	2008549	2008056	40835	47858	47857	45816
10037762	2018243-1	2008055		KIT (t/l)	2008549	2008056	40835	43075	47893	10012125
10126373	2018243-1	2008055		KIT (t/l)	2008549	2008056	40835	47858	47857	45816
10037772	10012394		54920					43075	47893	10012125
10037773	10012394	2008054		KIT (t/l)	2008549	2008056	40835	43075	47893	10012125
10037774	10012394		54920					43075	47893	10012125
10037776	2018243-1		54920					43075	47893	10012125
10037777	2018243-1	2008054		KIT (t/l)	2008549	2008056	40835	43075	47893	10012125
10037780	2018243-1	2008054		KIT (t/l)	2008549	2008056	40835	43075	47893	10012125
10037794	2018243-1	2008055		KIT (t/l)	2008549	2008056	40835	43075	47893	10012125
10093761	10012394	2008055		KIT (t/l)	2008549	2008056	40835	43075	47893	10012125

**DANA M256 NON-DRIVE FRONT AXLE**



**DANA M256 NON DRIVE AXLE: PART LISTING**

Item	Part #	Description	Notes
1	(3)	SPRING SEAT	
2	(3)	SCREW - FLANGE HEAD	
3	2002080	BUSHING - LH	
	2002787	BUSHING - RH	
	10458745	KIT - SOCKET ASSY	includes items 4-9
4	44101	NUT - SLOTTED	
5	500024-8	PIN - COTTER	
6	44133	NUT - LOCK	
7	2023350	SOCKET ASSY- UPPER	
8	2023351	SOCKET ASSY -LOWER	
9	54091	SNAP RING	
10	55037	SLINGER	
11	54829	NUT - HEX	
12	53644-2	STUD	
13	(3)	KNUCKLE - STEERING LH (FINISHED)	
	(3)	KNUCKLE - STEERING RH (FINISHED)	
14	(2)	SCREW - FLANGE HEAD	
15	45587	VENT	
16	(3)	SHIELD - PROTECTION - LH	
		SHIELD - PROTECTION - RH	
17	10016216	SCREW - FLANGE HEAD	
18	54983	O-RING	
19	(3)	HUB AND ROTOR ASSEMBLY	

**DANA M256 NON DRIVE AXLE:  
VARIABLE PARTS**

		Bill of Material				
Item	Description	2020912	10048457	2023485	10047733	10123198
14	SCREW - FLANGE HEAD (KNUCKLE)	10103188	10016222	10103188	10016222	10103188

(3) Contact Vehicle Manufacturer

30258.....	10	2008789.....	11	10016216.....	9,20
30263.....	9	2008913.....	13,17	10016222.....	11,20
30357.....	10	2010761.....	16	10018688.....	18
34729.....	9	2010902.....	18	10019566.....	9
34730.....	9	2011179.....	13	10031771.....	18
40835.....	11,19	2011840.....	13,17	10034909.....	18
43075.....	13,17,19	2012503.....	11	10043127.....	13,17
43180.....	9	2012504.....	11	10044397.....	9
44101.....	9,20	2013931.....	17	10048874.....	15
44133.....	9,20	2015925.....	13	10050776.....	16
44810.....	9	2017990.....	18	10055872.....	13
45587.....	9,20	2017992.....	18	10055873.....	13
45816.....	19	2018002.....	17	10055878.....	9,17
46082.....	9	2018003.....	18	10055880.....	17
47857.....	19	2018005.....	18	10103188.....	11,20
47858.....	19	2018521.....	16	10114708.....	10
47893.....	13,17,19	2019615.....	16	10116594.....	11
49543.....	10	2020682.....	10	10117206.....	11
53152.....	9	2020689.....	10	10117831.....	13
53256.....	13,17	2020704.....	10	10120543.....	9
53273.....	13,17	2020707.....	10	10124440.....	9
53287,17.....	13	2020715.....	10	10172353.....	13
54091.....	11,20	2020784.....	10	10458740.....	9
54630.....	9	2021009.....	9	10458741.....	9
54829.....	9,20	2021051.....	9	10458743.....	10
54920.....	19	2021787.....	16	10458745.....	11,20
54975.....	13	2022105.....	13	10458746.....	10
54983.....	9,20	2022306.....	13,17	10458748.....	11
55037.....	20	2022308.....	13,17	2007507-1.....	13
620343.....	11	2022557.....	16	2007551-1.....	13,17
703030.....	9	2022865.....	13	2012347-1.....	16
708238.....	11	2023094.....	16	2016946-1.....	9
2001762.....	13,17	2023188.....	9	2018243-1.....	19
2001857.....	13,17	2023204.....	17	2018880-2.....	15
2002080.....	11,20	2023350.....	11,20	2018880-4.....	15
2002360.....	9	2023351.....	11,20	2022974-1.....	18
2002787.....	11,20	10003987.....	9,13	2022974-2.....	18
2007152.....	13	10004000.....	17	2022976-2.....	18
2007154.....	16	10004908.....	17	2022976-3.....	18
2007199.....	13,17	10010271.....	10	2022976-4.....	18
2007202.....	13,17	10010277.....	10	2022976-5.....	18
2007408.....	9	10010792.....	15	2022976-6.....	18
2007409.....	9	10012125.....	13,17,19	48632-2.....	9
2007452.....	9	10012394.....	19	500024-8.....	9,20
2007794.....	9	10014126.....	9	52784-2.....	13
2008054.....	19	10014127.....	9	52784-2.....	17
2008055.....	19	10014131.....	13	53644-1.....	11
2008056.....	19	10014132.....	13	53644-2.....	11,20
2008157.....	19	10014315.....	13,17	70-31414-10.....	11,15
2008549.....	19	10014317.....	13,17	701007X.....	9
2008786.....	11	10014318.....	13,17	SPL70-4X.....	9
2008788.....	11	10014319.....	13,17		

Product Information: [SpicerParts.com](https://www.SpicerParts.com) | E-Catalog and parts locator: [DanaAftermarket.com](https://www.DanaAftermarket.com)

**SpicerParts.com**

**Dana Aftermarket Group**

PO Box 1000 Maumee, Ohio 43537

Warehouse Distributors: 1.800.621.8084

OE Dealers: 1.877.777.5360

Follow SpicerParts [f](#) [@](#) [v](#)

© 2022 Dana Limited. All rights reserved. LAXIP-0003-102023

**SPICER**<sup>®</sup>

