

Spicer® TIMS™  
(Tire Inflation and Monitor System)  
for Trailers

**SPICER**®

---



# Illustrated Parts List

---

**AXIP-0025**

**March 2007**



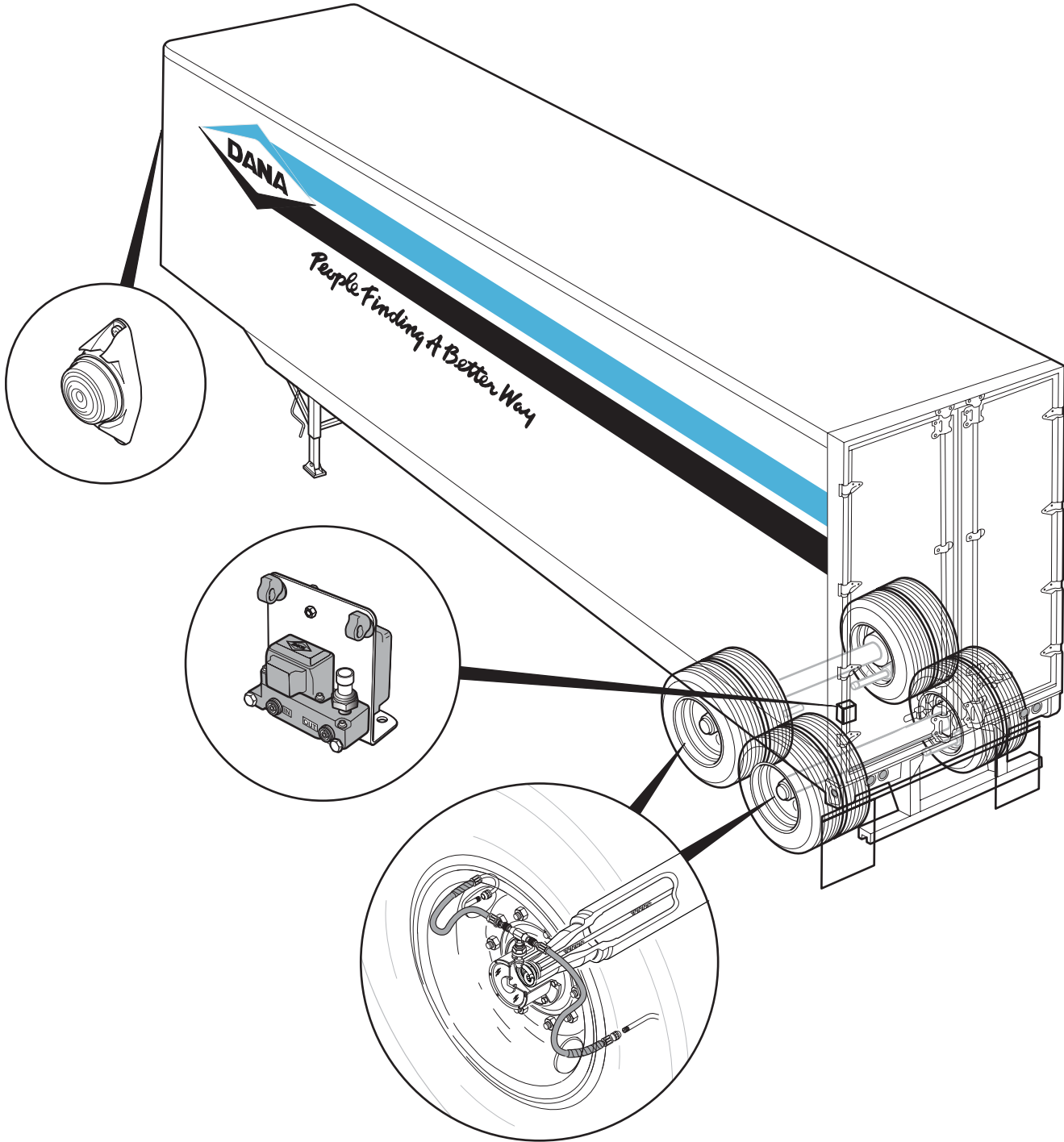
---

## Table of Contents

Table of Contents .....	1
General Information .....	2
How to Order Parts .....	3
TIMS Parts - Control Components .....	4
TIMS Parts - Harness, Axle & Spindle Components.....	5
TIMS Parts - Wheel End Components.....	6
TIMS Parts - Service Components .....	7
Quick Part Number Replacement List .....	7
Retrofit Kits.....	8
Index.....	9

## TIMS™ (Tire Inflation and Monitor System)

Spicer® TIMS™ for trailers offers a number of convenient, reliable and unique features to reduce your costs and simplify your service requirements.



## TIMS™ (Tire Inflation and Monitor System)

### How To Order Parts

**Category** - Indicates parts groups from which to order components for a new installation.

**Items** - Matched to parts on illustration.

**Part No.** - Numbers in Bold type are kits that may be ordered.

**Description** - Identifies the component

**Notes** - Key information (i.e. items contained in a kit)

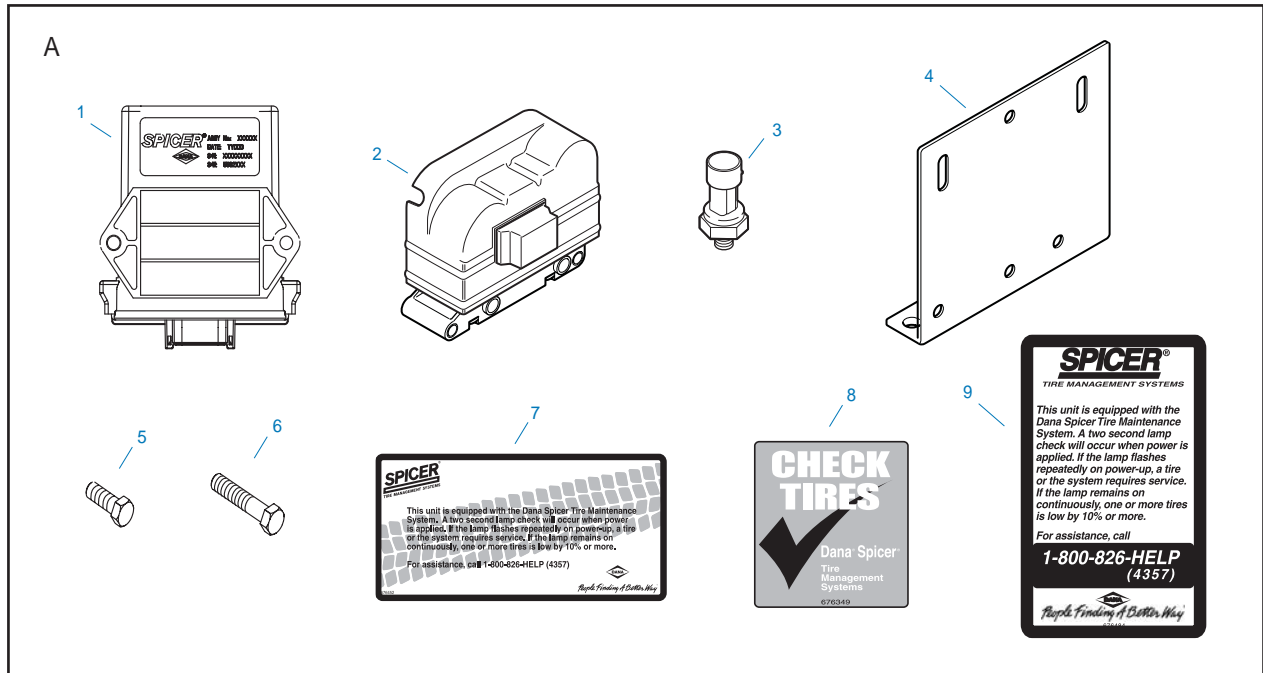
<u>Category</u>	<u>Item</u>	<u>Part No.</u>	<u>Description</u>	<u>Notes</u>
A	2	676467	PCU, Pneumatic Control Unit	Does not include Pressure Sensor
	3	676495	Pressure Sensor	Tan connector (0-153 PSIA)
	4	676644	Bracket - NSS	

**NSS** - Not Sold Separately

**Note** Always replace parts with same as original part.

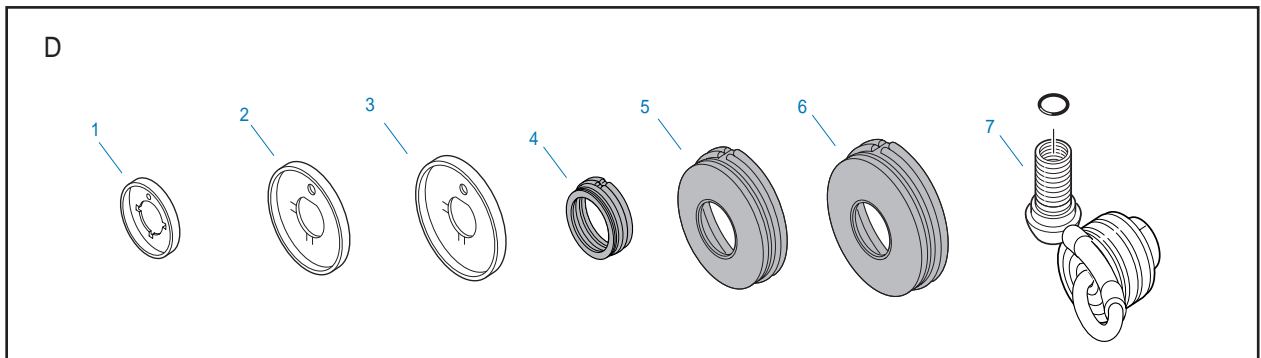
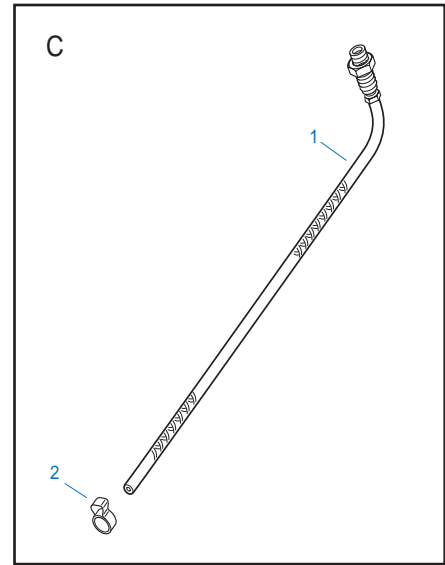
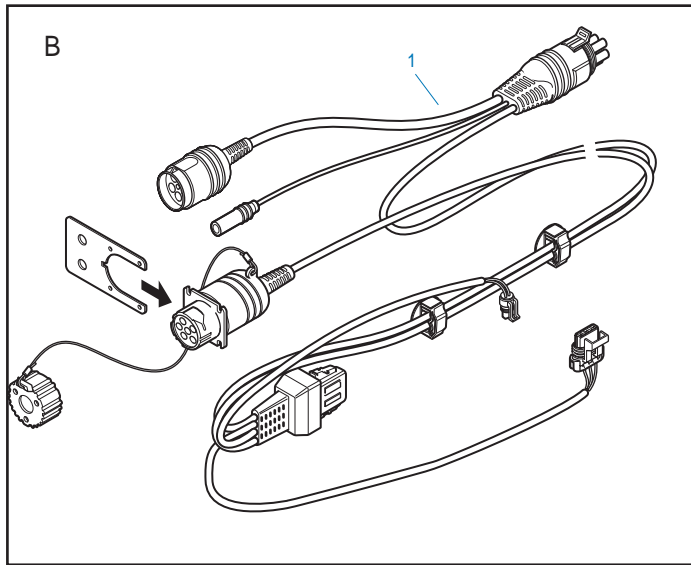
Every effort has been made to ensure the accuracy of this publication. However, Dana Corporation Commercial Vehicle & Systems Group makes no expressed or implied warranty representation based on the information contained in this publication.

TIMS™ Parts - Control Components



Category	Item	Part No.	Description	Notes
A			<b>Control Components</b>	
		676651	TIMS Controller Assy	Includes items 1-6 and locknuts
		676653	TIMS Controller Assy for Bendix TABS6	Includes items 2-4,6 and locknuts
	1	676631	ECU, Electronic Control Unit	
	2	676467	PCU, Pneumatic Control Unit	Does not include Pressure Sensor
	3	676495	Pressure Sensor	Tan connector
	4	676644	Bracket - NSS	
	5	676652	Bolts, ECU - NSS 1/4-20x 1	Locknuts 599631 NSS 1/4-20
	6	676667	Bolts, PCU - NSS 5/16-18x2.25	Locknuts 070HN108 NSS 5/16-18
	7	676452	Label, Information	
	8	676349	Label, Check Tire	
	9	676484	Label, System Maintenance	

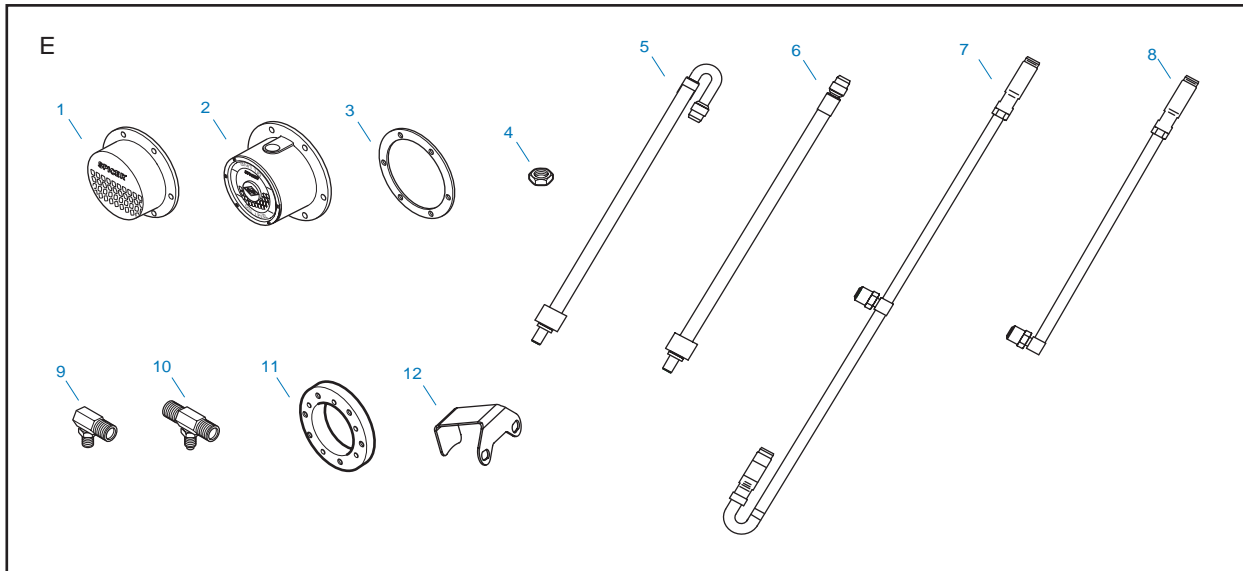
## TIMS™ Parts - Harness, Axle & Spindle Components



Category	Item	Part No.	Description	Notes
<b>B</b>				
		<b>Wiring Harness Components</b>		
	1	676608	Wiring Harness, 1.8m/6 ft	
		676609	Wiring Harness, 7.6m/25ft	
<b>C</b>				
		<b>Axle Components</b>		
	1	676473	Hose Assy., Axle Inlet - female 1/4" NP	Hose length 34.5"
	2	676384	Clamp, Stepless ear (Oetiker)	
<b>D</b>				
		<b>Spindle Hardware</b>		
	1	676397	Plug Assy., D22 Axle (1.75" I.D.)	
	2	676385	Plug Assy., P22 Axle (2.50" I.D.)	
	3	676447	Plug Assy., S.A.P. 225P Axle (2.75" I.D.)	
	4	676364	Mounting Cylinder, J (1.75" I.D.)	
	5	676347	Mounting Cylinder, P (2.50" I.D.)	
	6	676448	Mounting Cylinder, S.A.P. P (2.75" I.D.)	
	7	676450	Rotary Joint Assembly	

NSS - Not Sold Separately

## TIMS™ Parts - Wheel End Components



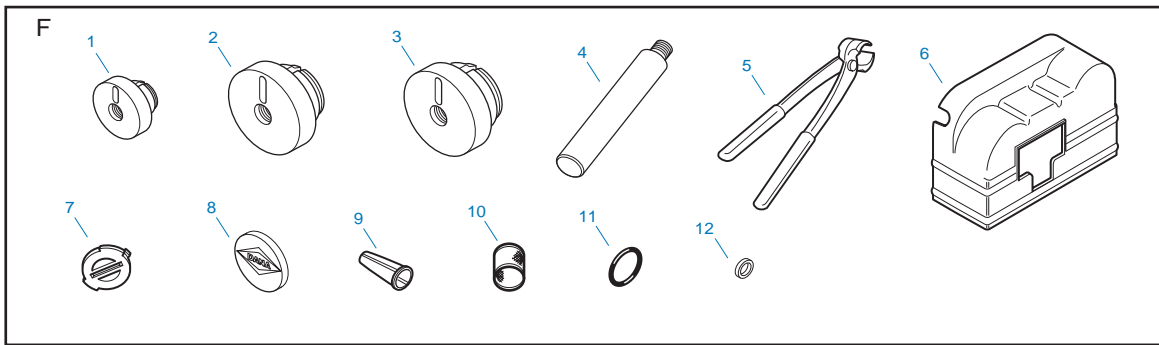
Category	Item	Part No.	Description	Notes
E			<b>Wheel End Components</b>	
	1	676400	Hubcap, 5.5" B.C., grease - D22	
	1	676411	Hubcap, 6.75" B.C., grease - P22	
	2	676401	Hubcap, 5.5" B.C., oil - D22	
	2	676412	Hubcap, 6.75" B.C., oil - P22	
	3	969143	Gasket, 5.5" B.C. - D22	Use with hubcaps 676400 and 676401
	3	M10HG138	Gasket, 6.75" B.C. - P22	Use with hubcaps 676411 and 676412
	4	676378	Jam Nut - 5/8"-18	Secures RJ fitting to Hubcap
	5	676669	Tire hose-dual,180°end - See note 1	Duals, outer tire hose 22-24" Wheel
	5	676670	Tire hose-dual,180°end - See note 1	Duals, outer tire hose 17.5-19.5" Wheel
	6	676648	Tire hose - dual, straight end - See note 1	Duals, inner tire hose 22-24" Wheel
	6	676649	Tire hose - straight - See note 1	Duals 17.5-19.5 inner / Wide base single
	7	676641	Tire Hose Assy - See note 2	For 22.5-24" Wheels
	7	676642	Tire Hose Assy - See note 2	For 17.5-19.5" Wheels
	8	676643	Tire Hose Assy - See note 2	For Wide Base Single Wheels
	9	676673	90° fitting, hubcap to hose	Used on item 6, wide base singles only
	10	676671	Tee fitting, hubcap to hose	Used on items 5,6 duals only
	11	673500	Spacer - 5.50 B.C., .5" thick	Required for Pro-torque nut and short hub
	12	676672	Wheel End Guard	

Note 1: Items 5-6 have the check valves located at the hubcap connection end.

Note 2: Items 7-8 have the check valves located at the valve stem end.



## TIMS™ Parts - Service Components & Tools



Category	Item	Part No.	Description	Notes
F	<b>Service Parts &amp; Tools</b>			
	1	676461	Tool, plug installation, 1.75"	
	2	676462	Tool, plug installation, 2.50"	
	3	676463	Tool, plug installation, 2.75"	
	4	N/A	Tool handle, universal (Kent Moore J-8092)	SPX Kent Moore Tools: 800-345-2233
	5	N/A	Oetiker clamp tool (Grainger 4E607)	
	6	676665	PCU Cover	
	7	676666	PCU filter cap	
	8	676645	Oil hubcap plug	Used on p/n 676401 & 676412 only
	9	676464	Filter, PCU (cone shaped)	Used on p/n 676403 PCU only
	10	676678	Filter, PCU (cylindrical shaped)	Used on p/n 676467 PCU only
	11	676374	O-ring, rotary joint to hubcap	O-ring .468 ID #3-906
	12	676472	Seal, tire hose (to valve stem)	O-ring square cut .250 ID - See note 1

Note 1: Used only on hose p/n 676387, 676388, 676481, and 676482

## Quick Part Number Replacement Listing

Old Part Number	Current Replacement Part Number	Description	Notes
673221	676505	Pressure Sensor	Use only with ECU 676474
676271	676609	Wiring Harness	Requires ECU 676631 & Pressure Sensor 676495
676272	676609	Wiring Harness	Requires ECU 676631 & Pressure Sensor 676495
676387	676669	Tire hose	Replace all associated hoses & fittings (see pg 6)
676388	676648	Tire hose	Replace all associated hoses & fittings (see pg 6)
676389	676671	Tee Fitting	Replace all associated hoses & fittings (see pg 6)
676403	676467	PCU	Requires bracket 676644 and assoc. hardware
676457	676673	90° Fitting	Replace all associated hoses & fittings (see pg 6)
676459	676473	Axle hose assy.	May require shortening
676470	676609	Wiring Harness	Requires ECU 676631 & Pressure Sensor 676495
676471	676609	Wiring harness	Requires ECU 676631 & Pressure Sensor 676495
676474	676631	ECU	Requires Pressure Sensor 676495
676475	676651	TIMS Controller Assy.	
676481	676649	Tire hose	Replace all associated hoses & fittings (see pg 6)
676482	676670	Tire hose	Replace all associated hoses & fittings (see pg 6)
676553	676631	ECU	
676559	676651	TIMS Controller Assy.	
676632	676651	TIMS Controller Assy.	

## Retrofit Kits

Description	Kit No.	Qty	Part No.	Notes
SYSTEM CONTROL KIT - 1.8 m (6 ft)	<b>512411</b>			For use when ABS power connection is on the suspension.
TIMS Controller Assy		1	676651	
Harness		1	676608	
Label, Check Tire		1	676349	
Label, Information		1	676452	
SYSTEM CONTROL KIT - 7.6 m (25 ft)	<b>512412</b>			For use when ABS power connection is on the trailer body.
TIMS Controller Assy		1	676651	
Harness		1	676609	
Label, Check Tire		1	676349	
Label, Information		1	676452	
AXLE KIT - D22 1.75" Spindle I.D.	<b>512413</b>			
Axle Hose Assy		2	676473	
Plug Assy, D22 Axle 1.75"		2	676397	
AXLE KIT - P22 2.50" Spindle I.D.	<b>512414</b>			
Axle Hose Assy		2	676473	
Plug Assy, P22 Axle 2.50"		2	676385	
AXLE KIT - P22 2.75" Spindle I.D.	<b>512415</b>			
Axle Hose Assy		2	676473	
Plug Assy, P22 Axle 2.75"		2	676447	
WHEEL END KIT - D22 1.75" Spindle I.D.	<b>513504</b>			
Mounting Cylinder, D22 1.75"		2	676364	
Rotary Joint Assy		2	676450	
Clamp, Stepless Ear - Oetiker		2	676384	
Jam Nut		2	676378	
WHEEL END KIT - P22 2.50" Spindle I.D.	<b>513505</b>			
Mounting Cylinder, P22 2.50"		2	676347	
Rotary Joint Assy		2	676450	
Clamp, Stepless Ear - Oetiker		2	676384	
Jam Nut		2	676378	
WHEEL END KIT - P22 2.75" Spindle I.D.	<b>513506</b>			
Mounting Cylinder, P22 2.75"		2	676448	
Rotary Joint Assy		2	676450	
Clamp, Stepless Ear - Oetiker		2	676384	
Jam Nut		2	676378	
TIRE HOSE KIT - DUAL 22.5-24.5" Tire	<b>513974</b>			
Wheel End Guard		2	676633	
Dual 22.5-24.5" Tire Hose Assy		2	676641	
TIRE HOSE KIT - DUAL 17.5-19.5"	<b>513975</b>			
Wheel End Guard		2	676633	
Dual 17.5-19.5" Tire Hose Assy		2	676642	
TIRE HOSE KIT - WIDE BASE SINGLE	<b>513976</b>			
Wheel End Guard		2	676633	
Wide Base Single Tire Hose Assy		2	676643	

**Note: Hubcaps not included with the above kits.**

## Index

Part No.	Description	Page	Part No.	Description	Page
512411	System Control Kit - 1.8m (6 ft)	8	676464	Filter, PCU - cone	7
512412	System Control Kit - 7.6m (25ft)	8	676472	Seal, Tire hose	7
512413	Axle Kit - D22 1.75"	8	676473	Hose Assy, Axle Inlet - female 1/4" NPT	5
512414	Axle Kit - P22 2.50"	8	676484	Label, System Maintenance	4
512415	Axle Kit - P22 2.75"	8	676495	Pressure Sensor	4
513504	Wheel End Kit - D22 1.75"	8	676608	Harness - 1.8m (6 ft)	5
513505	Wheel End Kit - P22 2.50"	8	676609	Harness - 7.6m (25 ft)	5
513506	Wheel End Kit - P22 2.75"	8	676631	ECU	4
513974	Tire Hose Kit - Dual 22.5"	8	676641	Tire Hose Assy with Check Valve	6
513975	Tire Hose Kit - Dual 19.5"	8	676642	Tire Hose Assy with Check Valve	6
513976	Tire Hose Kit - Wide Base Single	8	676643	Tire Hose Assy with Check	6
673500	Spacer, 5.50 B.C., .5" thick	6	676644	Bracket	4
676347	Mounting Cylinder, P (2.50)	5	676645	Plug, Oil Hubcap	7
676349	Label, Check Tire	4	676648	Tire Hose - Dual, Straight end	6
676364	Mounting Cylinder, J (1.75)	5	676649	Tire Hose - Straight	6
676374	O-ring, Rotary Joint	7	676651	TIMS Controller Assy	4
676378	Jam nut, 5/8" - 18	6	676652	Bolts, ECU	4
676384	Clamp, Stepless Ear (Oetiker)	5	676653	TIMS Controller Assy, Bendix TABS6	7
676385	Plug Assy, P22 Axle (2.50)	5	676665	Cover, PCU	7
676397	Plug Assy, D22 Axle (1.75)	5	676666	Filter Cap, PCU	7
676400	Hubcap, 5.5" B.C., grease - D22	6	676667	Bolts, PCU	4
676401	Hubcap, 5.5" B.C., oil - D22	6	676669	Tire Hose - Dual, 180 °end	6
676467	PCU	4	676670	Tire Hose - Dual, 180 °end	6
676411	Hubcap, 6.75" B.C., grease - P22	6	676671	Tee Fitting	6
676412	Hubcap, 6.75" B.C., oil - P22	6	676672	Wheel End Guard	6
676447	Plug Assy, S.A.P. 225P Axle (2.75)	5	676673	90° Fitting, Hubcap Super Single	6
676448	Mounting Cylinder, S.A.P. P (2.75)	5	676678	Filter, PCU - cylinder	7
676450	Rotary Joint Assy	5	969143	Gasket, 5.50" B.C. - D22	6
676452	Label, Information	4	M10HG138	Gasket, 6.75" B.C. - P22	6
676461	Tool, Plug Installation, 1.75"	7	N/A	Tool handle, Universal	7
676462	Tool, Plug Installation, 2.50"	7	N/A	Oetiker Clamp Tool	7
676463	Tool, Plug Installation, 2.75"	7			



## **SPICER®**

*Drivetrain Products*

Axles  
Driveshafts  
Off-Highway Transmissions

## **LONG®**

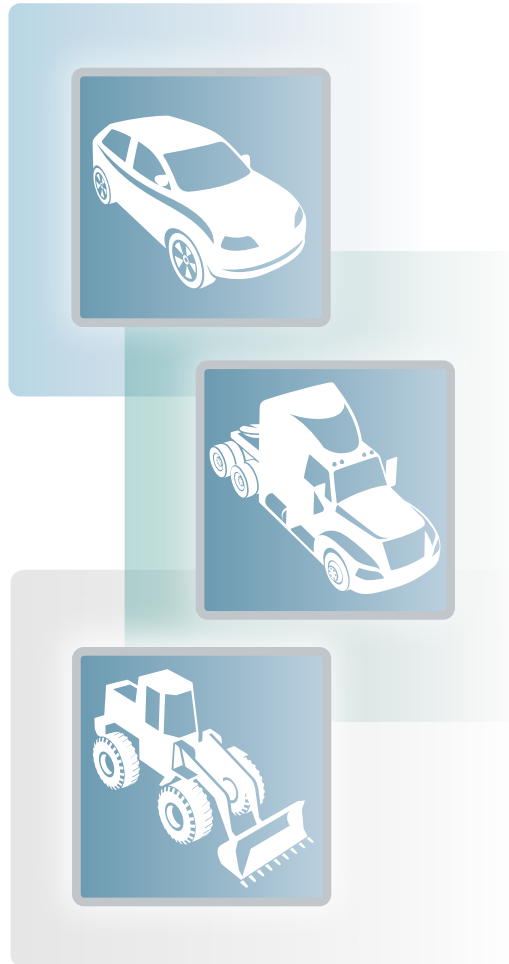
*Thermal Products*

Transmission Oil Coolers  
Engine Oil Coolers

## **VICTOR REINZ®**

*Sealing Products*

Gaskets and Seals  
Cylinder-Head Cover Modules  
Thermal-Acoustic Protective Shielding



**Dana Aftermarket Group**  
PO Box 321  
Toledo, Ohio 43697-0321

Warehouse Distributor: 1.800.621.8084  
OE Dealers: 1.877.777.5360

[www.spicerparts.com](http://www.spicerparts.com)

# **SPICER®**

