

SPICER®



AFTERMARKET

PERFORMANCE

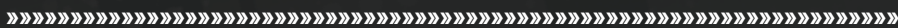
STRENGTH. POWER. ENDURANCE.

UNLEASHED.



Made in USA

SPICER LIFE SERIES® (SPL®) PREMIUM PERFORMANCE U-JOINT PACKS



www.DanaUnleashed.com

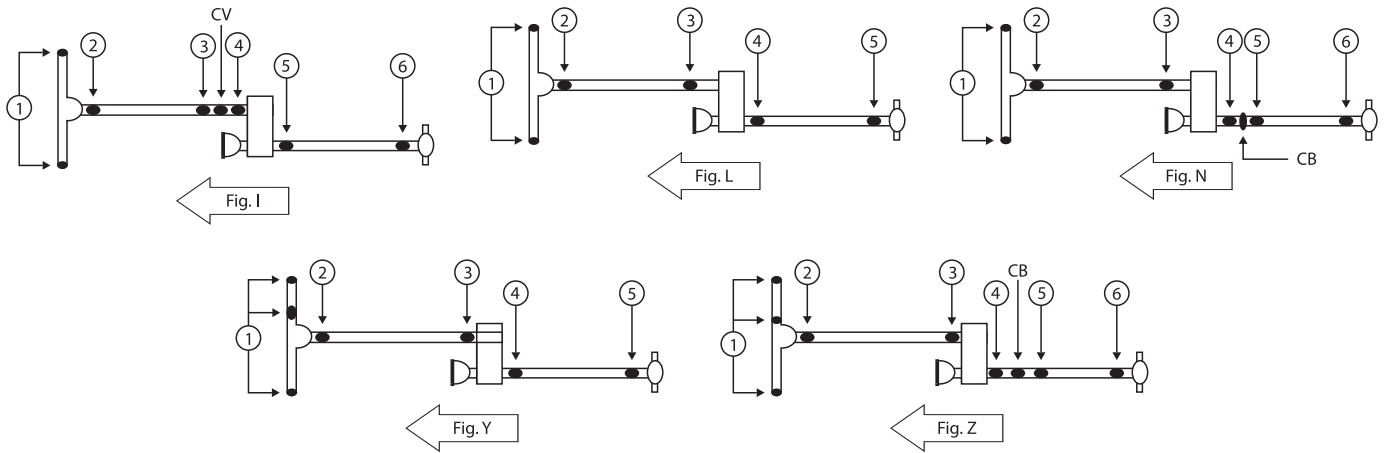




Spicer® parts are there when you hit the trail—and when the trail hits back. No matter what conditions you throw at your 4WD vehicle, trust non-greaseable Spicer SPL® U-joints with the triple lip seal for premium performance. And when you need it, Spicer 4WD u-joint performance packs have everything for a complete u-joint change-out— with just one part number to order. For a complete listing of applications, please visit www.SpicerParts.com/literature and download the catalog “K350-1-DSSP” from the driveshaft section.

SPICER LIFE SERIES® PERFORMANCE U-JOINT PACKS

- To help you find the Spicer u-joints you need for your vehicle, we have developed these performance u-joint charts. Simply follow these instructions. **1.** Use the Kit Numbers by Make charts on the right to find the kit number that matches your year, make, and model. **2.** Find your kit part number on the chart below. **3.** Read across the chart to determine which drawing (DWG) corresponds to your kit. **4.** Locate the u-joint that corresponds to the position you need.



| Make | Kit Number | DWG | Pos 1 | Pos 2 | Pos 3 | Pos 4 | Pos 5 | Pos 6 |
|-------|------------|--------|--------|---------|---------|---------|---------|---------|
| Ford | SPL1001FK | Y | 5-760X | 5-1330X | 5-1330X | 5-1350X | 5-1350X | N/A |
| Ford | SPL1002FK | Y | 5-760X | 5-1330X | 5-1330X | 5-7438X | 5-7438X | N/A |
| Ford | SPL1003FK | Z | 5-760X | 5-1330X | 5-1330X | 5-1330X | 5-1330X | 5-1330X |
| Ford | SPL1004FK | Y | 5-760X | 5-1330X | 5-1330X | 5-1330X | 5-1330X | N/A |
| Ford | SPL1005FK | Z | 5-760X | 5-1330X | 5-1330X | 5-1350X | 5-1350X | 5-1350X |
| Ford | SPL1006FK | Y or L | N/A | 5-1330X | 5-1330X | 5-1330X | 5-1330X | N/A |
| Ford | SPL1007FK | Y or L | N/A | 5-1330X | 5-1330X | 5-1350X | 5-1350X | N/A |
| Ford | SPL1008FK | Z | N/A | 5-1330X | 5-1330X | 5-1330X | 5-1330X | 5-1330X |
| Ford | SPL1009FK | Z | N/A | 5-1330X | 5-1330X | 5-1350X | 5-1350X | 5-1350X |
| Ford | SPL1011FK | L | N/A | 5-1310X | N/A | 5-1330X | 5-1330X | N/A |
| Ford | SPL1012FK | L | N/A | 5-1330X | N/A | 5-1330X | 5-1330X | N/A |
| Jeep | SPL1013JK | I | 5-760X | 5-1310X | 5-1310X | 5-1310X | 5-788X | 5-788X |
| Jeep | SPL1014JK | I | 5-760X | 5-1310X | 5-1310X | 5-1310X | 5-1310X | 5-1310X |
| Jeep | SPL1015JK | I | 5-760X | 5-1310X | 5-1310X | 5-1310X | 5-811X | 5-811X |
| Jeep | SPL1016JK | I | N/A | 5-1310X | 5-1310X | 5-1310X | 5-1310X | 5-1310X |
| Jeep | SPL1017JK | I | N/A | 5-1310X | 5-1310X | 5-1310X | 5-1330X | 5-1310X |
| Jeep | SPL1018JK | L | 5-760X | 5-1310X | 5-1310X | 5-1310X | 5-1310X | N/A |
| Jeep | SPL1019JK | I | 5-760X | 5-793X | 5-1330X | 5-1330X | 5-795X | 5-793X |
| Jeep | SPL1020JK | I | 5-760X | 5-793X | 5-1330X | 5-1330X | 5-1310X | 5-1310X |
| Chevy | SPL1021CK | L | N/A | 5-795X | 5-795X | 5-795X | 5-795X | N/A |
| Chevy | SPL1022CK | L | N/A | 5-795X | 5-795X | 5-1330X | 5-793X | N/A |
| Chevy | SPL1023CK | N | N/A | 5-795X | 5-795X | 5-1330X | 5-1330X | 5-793X |
| Chevy | SPL1024CK | L | N/A | 5-795X | 5-795X | 5-1350X | 5-1350X | N/A |
| Chevy | SPL1025CK | N | N/A | 5-795X | 5-795X | 5-1350X | 5-1350X | 5-1350X |

Kit Numbers by Make

| Year | Make | Model | Description | Kit # |
|-------|------|------------|--|-----------|
| 97-99 | Ford | F-150 | 2-Joint Driveshaft w/4 outside snaps | SPL1001FK |
| 00-01 | Ford | F-150 | 2-Joint Driveshaft w/4.2L & 4.6L Exc. Reg. Cab w/Short Bed | SPL1001FK |
| 00-01 | Ford | F-150 | 2-Joint Driveshaft w/5.4L Eng. | SPL1001FK |
| 97-99 | Ford | F-150 | 2-Joint Driveshaft w/2 inside and 2 outside snap rings | SPL1002FK |
| 97-99 | Ford | F-150 | 3-Joint Driveshaft | SPL1003FK |
| 00-01 | Ford | F-150 | 3-Joint Driveshaft w/4.2L & 4.6L Eng. | SPL1003FK |
| 00-01 | Ford | F-150 | 2-Joint Driveshaft w/4.2L & 4.6L Reg. Cab w/Short Bed | SPL1004FK |
| 00-01 | Ford | F-150 | 3-Joint Driveshaft w/5.4L Eng. | SPL1005FK |
| 02-03 | Ford | F-150 | 2-Joint Driveshaft w/4.2L & 4.6L Reg. Cab w/Short Bed | SPL1006FK |
| 97-01 | Ford | Expedition | 2 joint shaft w/std suspension | SPL1006FK |
| 02-03 | Ford | F-150 | 2-Joint Driveshaft w/4.2L & 4.6L Exc. Reg. Cab w/Short Bed | SPL1007FK |
| 02-03 | Ford | F-150 | 2-Joint Driveshaft w/5.4L Eng. | SPL1007FK |
| 04 | Ford | F-150 | 2-Joint Driveshaft w/4.2L & 4.6L Exc. Reg. Cab w/Short Bed | SPL1007FK |
| 97-01 | Ford | Expedition | 2 joint shaft w/adj. suspension | SPL1007FK |
| 02-06 | Ford | Expedition | 2 joint Driveshaft | SPL1007FK |
| 02-04 | Ford | F-150 | 3-Joint Driveshaft w/4.2L & 4.6L Eng. | SPL1008FK |
| 02-03 | Ford | F-150 | 3-Joint Driveshaft w/5.4L Eng. | SPL1009FK |
| 98-03 | Ford | Explorer | w/plunging CV joint at TC | SPL1010FK |
| 04 | Ford | Explorer | w/o Sport Trac | SPL1011FK |
| 05-06 | Ford | Explorer | | SPL1011FK |
| 04 | Ford | Explorer | w/Sport Trac | SPL1012FK |



Jeep



| Year | Make | Model | Description | Kit # |
|-------|------|-----------------------|---|-----------|
| 94-98 | Jeep | Grand Cherokee | w/2 inside & 2 outside snap rings | SPL1013JK |
| 95-98 | Jeep | Cherokee Compact (XJ) | w/2 inside & 2 outside snap rings | SPL1013JK |
| 94-98 | Jeep | Grand Cherokee | w/4 outside snap rings | SPL1014JK |
| 99 | Jeep | Grand Cherokee | | SPL1014JK |
| 95-98 | Jeep | Cherokee Compact (XJ) | w/4 outside snap rings | SPL1014JK |
| 99-01 | Jeep | Cherokee Compact (XJ) | w/automatic transmission | SPL1014JK |
| 99-02 | Jeep | Wrangler (TJ) | | SPL1014JK |
| 03-04 | Jeep | Wrangler (TJ) | Exc. Wrangler Rubicon | SPL1014JK |
| 05-06 | Jeep | Wrangler (TJ) | Exc. Wrangler Rubicon & Unlimited Rubicon | SPL1014JK |
| 94-98 | Jeep | Grand Cherokee | w/4 inside snap rings w/7290 series | SPL1015JK |
| 95-98 | Jeep | Cherokee Compact (XJ) | w/4 inside snap rings w/7290 series | SPL1015JK |
| 00 | Jeep | Grand Cherokee | | SPL1016JK |
| 01-03 | Jeep | Grand Cherokee | 4.7L w/o Selec-Trac | SPL1016JK |
| 04 | Jeep | Grand Cherokee | 4.7L Eng. | SPL1016JK |
| 01-03 | Jeep | Grand Cherokee | 4.7L w/Selec-Trac | SPL1017JK |
| 97-98 | Jeep | Wrangler (TJ) | | SPL1018JK |
| 03-04 | Jeep | Wrangler (TJ) | Rubicon | SPL1019JK |
| 05-06 | Jeep | Wrangler (TJ) | Rubicon | SPL1019JK |
| 05-06 | Jeep | Wrangler (TJ) | Unlimited Rubicon | SPL1020JK |

| Year | Make | Model | Description | Kit # |
|-------|-----------|-----------------|---|-----------|
| 99-04 | Chev./GMC | 1500/1500 HD PU | Regular Cab | SPL1021CK |
| 05 | Chev./GMC | 1500/1500 HD PU | Regular Cab w/inside snap rings | SPL1021CK |
| 99-01 | Chev./GMC | 1500/1500 HD PU | Extended Cab, Short bed | SPL1022CK |
| 02-04 | Chev./GMC | 1500/1500 HD PU | Extended Cab, Std Bed, w/o 4 wheel steering option | SPL1022CK |
| 99-01 | Chev./GMC | 1500/1500 HD PU | Extended Cab, long bed | SPL1023CK |
| 02-04 | Chev./GMC | 1500/1500 HD PU | Extended Cab, Long Bed, w/o 4 wheel steering option | SPL1023CK |
| 02-04 | Chev./GMC | 1500/1500 HD PU | Extended Cab, Std Bed, w/4 wheel steering | SPL1024CK |
| 05 | Chev./GMC | 1500/1500 HD PU | Regular Cab w/outside snap rings | SPL1024CK |
| 06 | Chev./GMC | 1500/1500 HD PU | Regular Cab, Ext. Cab-Std Bed, Crew Cab | SPL1024CK |
| 02-04 | Chev./GMC | 1500/1500 HD PU | Crew Cab | SPL1025CK |
| 06 | Chev./GMC | 1500/1500 HD PU | Extended Cab Long Bed | SPL1025CK |



To find out more about Spicer Life Series® performance u-joint packs, as well as more products engineered for performance applications, visit www.DanaUnleashed.com or talk to your Spicer parts sale representative today.

SPICER®



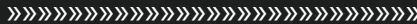
AFTERMARKET

PERFORMANCE

STRENGTH. POWER. ENDURANCE.

UNLEASHED.

Other Trusted Dana Brands



VICTOR REINZ®



TRU-COOL®

SVL®



GWB®

A Dana Brand



Dana Aftermarket Group

PO Box 321

Toledo, Ohio 43697-0321

Customer Service: 1.800.621.8084

Email: DanaNorthAmericaDC@Dana.com

www.DanaUnleashed.com

